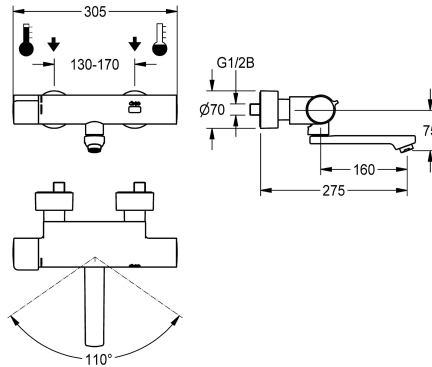


KWC F5E-Therm Electronic thermostatic wall-mounted mixer with battery operation

Modell-Linie: F5E | F5ET1018
Taps | Electronic taps



| KWC-No. |
|---|
| 2030032981 Projection 215 mm |
| 2030032980 Projection 155 mm |
| 2030032983 Projection 275 mm |
| 2030039527 with projection 155 mm and pre-installed disinfection unit |
| 2030039528 with projection 215 mm and pre-installed disinfection unit |
| 2030039529 with projection 275 mm and pre-installed disinfection unit |

| spout projection |
|------------------|
| 215 mm |
| 155 mm |
| 275 mm |
| 155 mm |
| 215 mm |
| 275 mm |

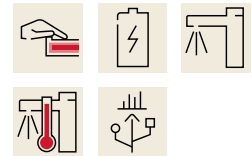
| thermal disinfection |
|--------------------------------|
| yes |
| yes |
| yes |
| automatic thermal disinfection |
| automatic thermal disinfection |
| automatic thermal disinfection |

F5E-Therm thermostatic mixer DN 15 for wall mounting with lockable swivelling spout, for sanitary facilities. Opto-electronically controlled, triggered via hand movement. Thermostat with metal handle with adjustable and turn-proof temperature stop. With option for thermal disinfection, manually or automatically via pre-assembled disinfection unit. For connection to hot and cold water. Control electronics, solenoid valve cartridge, 6 V lithium battery (CR-P2) and sensor in scald-protected safe-touch housing, high-

polished chromium-plated brass. Laminar jet controller with integrated flow regulator 6.0 l/min. With adjustable and lockable connections with backflow preventer and strainers, completely covered with depth-adjustable screw rosettes. Projection 275 mm. Activated water hygiene flushing 24 hours after last activation, safety switch-off with continuous reflection and saving of statistical data. With option for parameterization and communication via optional, bidirectional remote control.

| Technical Data |
|--------------------------------|
| with backflow preventer |
| calculation flow rate cold wat |
| calculation flow rate hot wate |
| compatible A3000 open |
| default automatic hygiene flus |
| default flow time |
| depressurised |
| with filter |
| adjustable flow time |
| functional principle |
| hygiene flushing |
| diameter nominal |
| inlet size |
| Locking mechanism |
| material fitting |
| maximum flow time |

| |
|-----------------------------|
| yes |
| 0.07 l/s |
| 0.07 l/s |
| no |
| 24h after the last activity |
| 10 Seconds |
| no |
| yes |
| yes |
| electronic self-closing |
| yes |
| DN 15 |
| G 1/2 B |
| Top section, non-ceramic |
| brass-look |
| 255 Seconds |



KWC F5E-Therm

Electronic thermostatic wall-mounted mixer with battery operation

Modell-Linie: F5E | F5ET1018

Taps | Electronic taps

| | |
|-------------------------------|--------------------------------|
| minimum flow pressure | 1 bar |
| minimum flow time | 1 Seconds |
| type of mixing | with thermostat |
| number of batteries | 1 |
| Parameterization | remote control |
| Pop-up waste set | no |
| power supply connection | Battery 6 V |
| power consumption | 1.5 Voltampere |
| Type of power supply | Battery |
| protective system IP | IP59K |
| with rosettes/cover plate | yes |
| protective shutdown | yes |
| sound insulation | no |
| Spout | rotating, bottom |
| spout projection | 275 mm |
| surface finish fitting | chromed |
| surface treatment fitting | polished |
| temperature limit | yes |
| thermal disinfection | automatic thermal disinfection |
| with transformer/power supply | no |
| type of batteries | CR-P2 Lithium battery 6V |
| type of mounting | wall mounting |
| type of operation | sensor operation |
| type of sensor | opto-electronic sensor |
| type of tap | bib tap |
| Volume flow rate bypass PWH | 0.05 l/s |
| volume flow rate at 3 bar | 0.1 l/s |
| water connection | S-connections |
| Accent colour | none |
| Basic colour | chrome-look (glossy) |

Optional Accessories



Bidirectional remote control for electronic fittings F3 and F5

2030036654
ACEX9005



2-button remote control for fittings F3 and F5

2030036849
ACEX9004



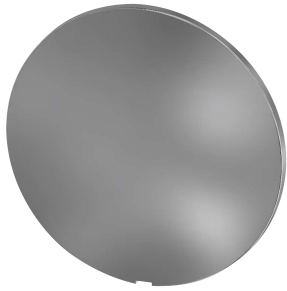
Theft-proof housing for aerator

2000104778
ZTAPS0005

KWC F5E-Therm Electronic thermostatic wall-mounted mixer with battery operation

Modell-Linie: F5E | F5ET1018
Taps | Electronic taps

Spare Parts



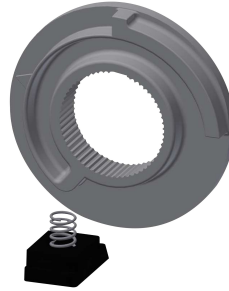
Cover

2030003258
EAQLT0002



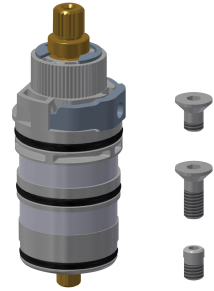
Temperature handle

2030050541
ASXT9004



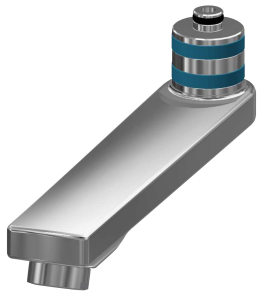
Temperature stop

2030003296
EAQLT0003



Thermocouple

2030003300
EAQLT0004



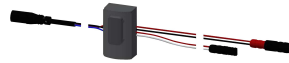
Swivel spout, 160 mm

2030032815
ASXX1002



Laminar jet regulator

2030012352
ETAPS0037



Sensor, ID 02/00002

2030041459
ASXT9001



Solenoid valve cartridge

2030045522
ACXX9002



Lithium battery 6 V

2000104846
EPRTR0008



Battery compartment

3600002063
ACEX9023



Mounting set

2030003401
EAQLT0009



Screw rosette

2030046777
ASXX9003