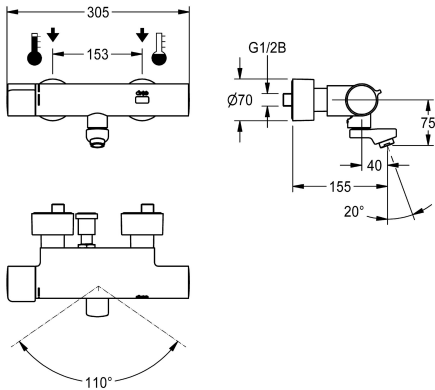


KWC F5E-Therm
Electronic thermostatic wall-mounted mixer for separate power supply

Modell-Linie: F5E | F5ET1019
Taps | Electronic taps



KWC-No.
2030036211
2030036210 Projection 155 mm
2030036212 Projection 275 mm
2030039530 with projection 155 mm and pre-installed disinfection unit
2030039538 with projection 215 mm and pre-installed disinfection unit
2030039539 with projection 275 mm and pre-installed disinfection unit

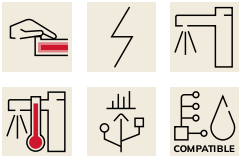
spout projection	thermal disinfection
215 mm	yes
155 mm	yes
275 mm	yes
155 mm	automatic thermal disinfection
215 mm	automatic thermal disinfection
275 mm	automatic thermal disinfection

F5E-Therm thermostatic mixer DN 15 for wall mounting with lockable swivelling spout, for sanitary facilities. Opto-electronically controlled, triggered via hand movement. Thermostat with metal handle with adjustable and turn-proof temperature stop. With option for thermal disinfection, manually or automatically via pre-assembled disinfection unit. For connection to hot and cold water. Control electronics, solenoid valve cartridge and sensor in scald-protected safe-touch housing, high-polished chromium-plated brass. Laminar jet controller with integrated flow regulator 6.0 l/min.

With adjustable and lockable connections with backflow preventer and strainers, completely covered with depth-adjustable screw rosettes. Projection 155 mm. Activated water hygiene flushing 24 hours after last activation, safety switch-off with continuous reflection and saving of statistical data. With option for parameterization and communication via optional, bidirectional remote control. Separate power supply via power supply unit 6.75 V / 12 V DC or AQUA 3000 open system accessories.

Technical Data

with backflow preventer	yes
calculation flow rate cold wat	0.07 l/s
calculation flow rate hot wate	0.07 l/s
compatible A3000 open	yes
default automatic hygiene flus	24h after the last activity
default flow time	10 Seconds
depressurised	no
with filter	yes
adjustable flow time	yes
functional principle	electronic self-closing
hygiene flushing	yes
diameter nominal	DN 15
inlet size	G 1/2 B
Locking mechanism	Top section, non-ceramic
material fitting	brass

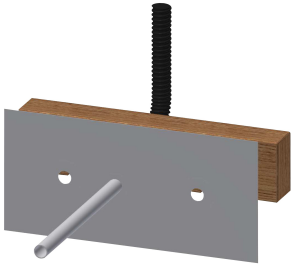


KWC F5E-Therm
Electronic thermostatic wall-mounted mixer for separate power supply

Modell-Linie: F5E | F5ET1019
Taps | Electronic taps

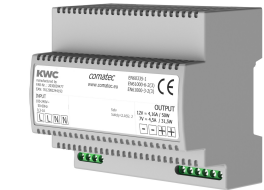
maximum flow time	255 Seconds
minimum flow pressure	1 bar
minimum flow time	1 Seconds
type of mixing	with thermostat
Parameterization	remote control
Pop-up waste set	no
power supply connection	6,75 / 12 VDC / A3000 open
position of power connection	from backside
power consumption	1.5 Voltampere
Type of power supply	Transformer
protective system IP	IP59K
with rosettes/cover plate	yes
protective shutdown	yes
sound insulation	no
Spout	rotating, bottom
spout projection	155 mm
surface finish fitting	chromed
surface treatment fitting	polished
temperature limit	yes
thermal disinfection	automatic thermal disinfection
with transformer/power supply	no
type of mounting	wall mounting
type of operation	sensor operation
type of sensor	opto-electronic sensor
type of tap	bib tap
Volume flow rate bypass PWH	0.05 l/s
volume flow rate at 3 bar	0.1 l/s
water connection	S-connections
Accent colour	none
Basic colour	chrome-look (glossy)

Mandatory Accessories



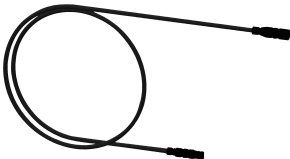
Mounting bar for F5 wall-mounted mixers

2030071303
F5BTX002



Power supply unit

2030039477
ACEX9001



Extension cable 5 m

2030043814
ACEX9010

KWC F5E-Therm
Electronic thermostatic wall-mounted mixer for separate power supply

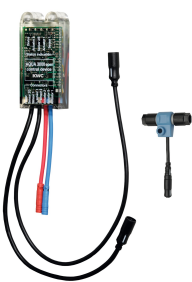
Modell-Linie: F5E | F5ET1019
Taps | Electronic taps

Optional Accessories



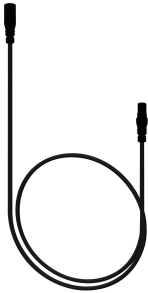
Theft-proof housing for aerator

2000104778
ZTAPS0005



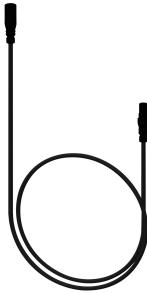
Electronic module for wash basin taps F5

2030041914
ACET1001



Extension cable for sensor

2030041919
ACEX9006



Extension cable for sensor

2030041920
ACEX9007



Bidirectional remote control for electronic fittings F3 and F5

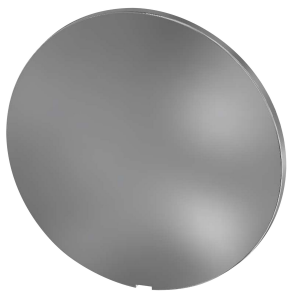
2030036654
ACEX9005



2-button remote control for fittings F3 and F5

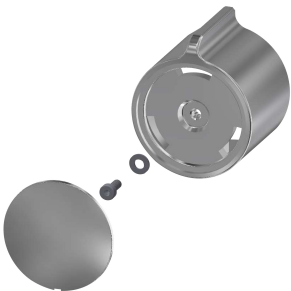
2030036849
ACEX9004

Spare Parts



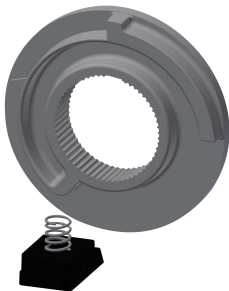
Cover

2030003258
EAQLT0002



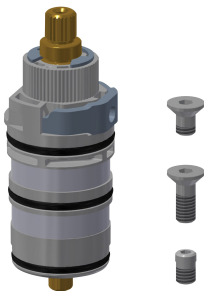
Temperature handle

2030050541
ASXT9004



Temperature stop

2030003296
EAQLT0003



Thermocouple

2030003300
EAQLT0004



KWC F5E-Therm
Electronic thermostatic wall-mounted mixer for separate power supply

Modell-Linie: F5E | F5ET1019
Taps | Electronic taps



Swivel spout, 40 mm

2030035159
ASXX1003



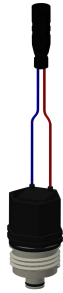
Laminar jet regulator

2030012352
ETAPS0037



Sensor, ID 02/00002

2030041459
ASXT9001



Solenoid valve cartridge

2030045522
ACXX9002



Mounting set

2030003401
EAQLT0009



Screw rosette

2030046777
ASXX9003



Hexagonal socket wrench

2030047722
ACEX9011