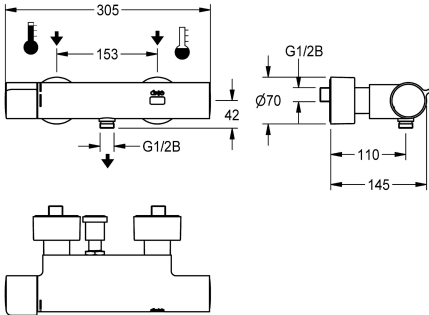


KWC

F5E-Therm electronic thermostatic wall-mounted mixer for separate power supply, with hand-shower connection

Modell-Linie: F5E | F5ET2006
Showers | Electronic self closing shower



KWC-No.

2030039543

2030039551

Version with pre-assembled thermal disinfection unit

thermal disinfection

yes

automatic thermal disinfection

F5E-Therm thermostatic mixer DN 15 for wall mounting, for shower facilities. Electronically controlled, for connection to hot water and cold water. Thermostat with metal handle and adjustable, turn-proof temperature stop. With option for thermal disinfection, manually or automatically via optional disinfection unit. Control electronics, solenoid valve cartridge and touch sensor in scald-protected safe-touch housing, with hand-shower connection, G 1/2 B. Full-metal version, high-polished chromium-plated brass. With

adjustable and lockable connections with backflow preventer and strainers, completely covered with depth-adjustable screw rosettes. Activated water hygiene flushing 24 hours after last activation and saving of statistical data. With option for parameterization and communication via optional, bidirectional remote control. Separate power supply via power supply unit 6.75 V / 12 V DC or AQUA 3000 open system accessories.

Technical Data

additional connections
with backflow preventer
calculation flow rate cold wat
calculation flow rate hot water
circulation
compatible A3000 open
connection with pay water disp
default automatic hygiene flus
default flow time
with filter
adjustable flow time
functional principle
for hand shower
hygiene flushing
diameter nominal
inlet size
Locking mechanism
material casing
material fitting
maximum flow time
minimum flow pressure
minimum flow time

no
yes
0.15 l/s
0.15 l/s
no
yes
via electronic module
24h after the last activity
30 Seconds
yes
yes
electronic self-closing
yes
yes
DN 15
G 1/2 B
Top section, non-ceramic
brass
brass
255 Seconds
1 bar
1 Seconds

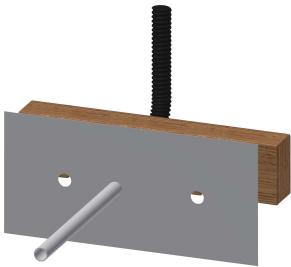
KWC

F5E-Therm electronic thermostatic wall-mounted mixer for separate power supply, with hand-shower connection

Modell-Linie: F5E | F5ET2006
Showers | Electronic self closing shower

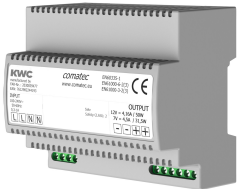
type of mixing	with thermostat
Parameterization	remote control
power supply connection	6,75 / 12 V DC / A3000 open
position of power connection	from backside
power consumption	1.5 Voltampere
Type of power supply	Transformer
with rosettes/cover plate	yes
protective shutdown	yes
shower pipe draining	no
sound insulation	no
surface finish casing	chromed
surface finish fitting	chromed
surface treatment fitting	polished
temperature limit	yes
thermal disinfection	yes
with transformer/power supply	no
type of mounting	wall mounting
type of operation	sensor operation
type of sensor	opto-electronic sensor
type of shower	wall fitting
Volume flow rate bypass PWH	0.05 l/s
volume flow rate at 3 bar	0.23 l/s
water connection	S-connections
position of water connection	from backside
Accent colour	none
Basic colour	chrome-look (glossy)

Mandatory Accessories



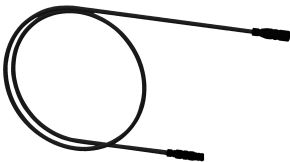
Mounting bar for F5 wall-mounted mixers

2030071303
F5BTX002



Power supply unit

2030039477
ACEX9001



Extension cable 5 m

2030043814
ACEX9010

Optional Accessories

KWC
F5E-Therm electronic thermostatic wall-mounted mixer for separate power supply, with hand-shower connection

Modell-Linie: F5E | F5ET2006
Showers | Electronic self closing shower



Bidirectional remote control for electronic fittings F3 and F5

2030036654
ACEX9005



2-button remote control for fittings F3 and F5

2030036849
ACEX9004



Hand shower

2030051216
ACXX2007



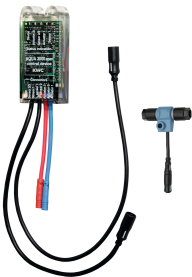
Shower bracket

2030051217
ACXX2008



Thermal disinfection unit for F5E-Therm thermostatic wall mixers

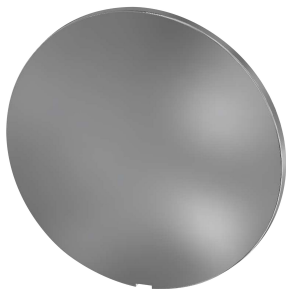
2030039541
ACET9001



Electronic module EM5 for F5 shower taps

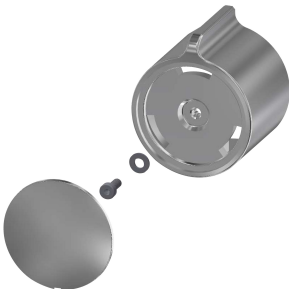
2030041918
ACET2001

Spare Parts



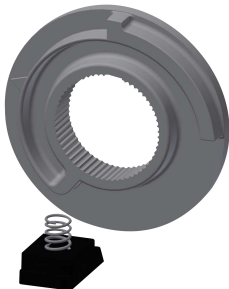
Cover

2030003258
EAQLT0002



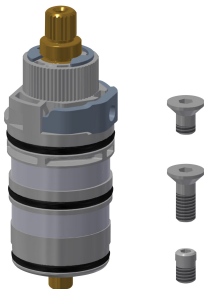
Temperature handle

2030050541
ASXT9004



Temperature stop

2030003296
EAQLT0003

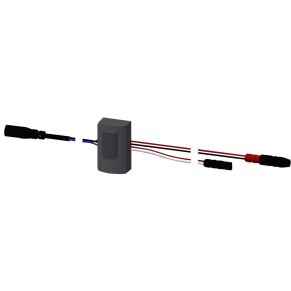


Thermocouple

2030003300
EAQLT0004

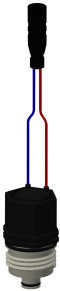
KWC
F5E-Therm electronic thermostatic wall-mounted mixer for separate power supply, with hand-shower connection

Modell-Linie: F5E | F5ET2006
Showers | Electronic self closing shower



Sensor, ID 12/00001

2030041460
ASET2001



Solenoid valve cartridge

2030003033
EAQFU0001



Mounting set

2030003401
EAQLT0009



Screw rosette

2030046777
ASXX9003



Hexagonal socket wrench

2030047722
ACEX9011
