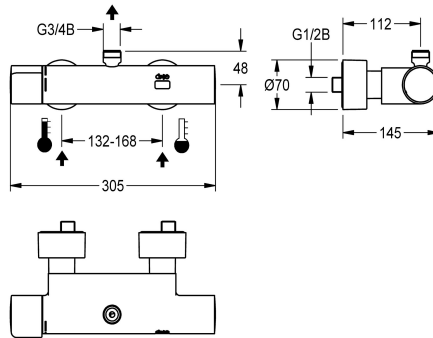


KWC F5E-Therm

Electronic thermostatic wall-mounted mixer with battery operation

Modell-Linie: F5E | F5ET2007

Showers | Electronic self closing shower



KWC-No.

2030032990

2030039547

Version with pre-assembled thermal disinfection unit

thermal disinfection

yes

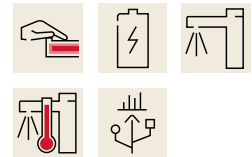
automatic thermal disinfection

F5E-Therm thermostatic mixer DN 15 for wall mounting, for shower facilities. Electronically controlled, for connection to hot water and cold water. Thermostat with metal handle and adjustable, turn-proof temperature stop. With option for thermal disinfection, manually or automatically via pre-assembled disinfection unit. Control electronics, solenoid valve cartridge, 6 V lithium battery (CR-P2) and touch sensor in scald-protected safe-touch housing with outlet on top, G 3/4 B, for installation of bent outlet or surface-

mounted shower pipe. All-metal construction, high-polished chromium-plated brass. With adjustable and lockable connections with backflow preventer and strainers, completely covered with depth-adjustable screw rosettes. Activated water hygiene flushing 24 hours after last activation and saving of statistical data. With option for parameterization and communication via optional, bidirectional remote control.

Technical Data

additional connections	no
with backflow preventer	yes
calculation flow rate cold water	0.15 l/s
calculation flow rate hot water	0.15 l/s
circulation	no
connection with pay water disp	not possible
default automatic hygiene flush	24h after the last activity
default flow time	30 Seconds
with filter	yes
adjustable flow time	yes
functional principle	electronic self-closing
for hand shower	no
hygiene flushing	yes
diameter nominal	DN 15
inlet size	G 1/2 B
Locking mechanism	Top section, non-ceramic
material casing	brass
material fitting	brass
maximum flow time	255 Seconds
minimum flow pressure	1 bar
minimum flow time	1 Seconds
type of mixing	with thermostat



KWC F5E-Therm

Electronic thermostatic wall-mounted mixer with battery operation

Modell-Linie: F5E | F5ET2007

Showers | Electronic self closing shower

number of batteries	1
Parameterization	remote control
power supply connection	Battery 6 V
power consumption	1.5 Voltampere
Type of power supply	Battery
protective system IP	IP59K
with rosettes/cover plate	yes
protective shutdown	yes
shower pipe draining	no
sound insulation	no
surface finish casing	chromed
surface finish fitting	chromed
surface treatment fitting	polished
temperature limit	yes
thermal disinfection	automatic thermal disinfection
with transformer/power supply	no
type of batteries	CR-P2 Lithium battery 6V
type of mounting	wall mounting
type of operation	sensor operation
type of sensor	opto-electronic sensor
type of shower	wall fitting
Volume flow rate bypass PWH	0.05 l/s
volume flow rate at 3 bar	0.23 l/s
water connection	S-connections
position of water connection	from backside
Accent colour	none
Basic colour	chrome-look (glossy)

Optional Accessories



Bent outlet

2030050434
ACXX2005



Bent outlet

2030050435
ACXX2006



Shower pipe

2030041525
ACXX2003



AQUAJET-Slimline shower head

2000103757
AQUA757

KWC F5E-Therm

Electronic thermostatic wall-mounted mixer with battery operation

Modell-Linie: F5E | F5ET2007

Showers | Electronic self closing shower



AQUAJET-Comfort shower head

2030021283
SHAC0008



Bidirectional remote control for electrical fittings F3 and F5

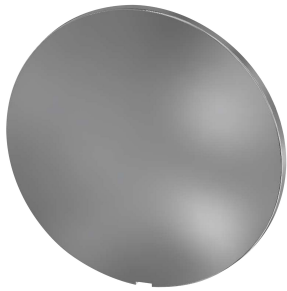
2030036654
ACEX9005



2-button remote control for fittings F3 and F5

2030036849
ACEX9004

Spare Parts



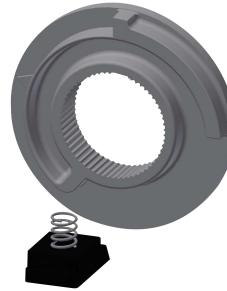
Cover

2030003258
EAQLT0002



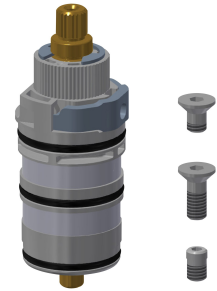
Temperature handle

2030047082
ASXT9003



Temperature stop

2030003296
EAQLT0003



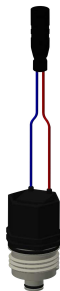
Thermocouple

2030003300
EAQLT0004



Sensor, ID 12/00001

2030041460
ASET2001



Solenoid valve cartridge

2030003033
EAQFU0001



Lithium battery 6 V

2000104846
EPRTR0008



Solenoid valve cartridge

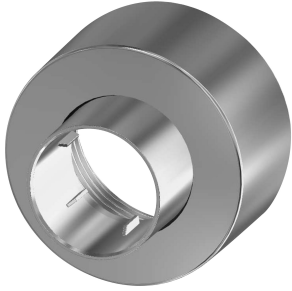
2030045522
ACXX9002

KWC F5E-Therm

Electronic thermostatic wall-mounted mixer with battery operation

Modell-Linie: F5E | F5ET2007

Showers | Electronic self closing shower



Screw rosette

2030046777
ASXX9003



Mounting set

2030003401
EAQLT0009



Hexagonal socket wrench

2030047722
ACEX9011