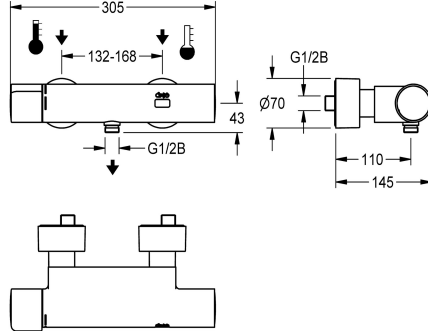


KWC F5E-Therm electronic thermostatic wall-mounted mixer with hand-shower connection and battery operation

Modell-Linie: F5E | F5ET2008
Showers | Electronic self closing shower



KWC-No.
2030036691
2030039548 Version with pre-assembled thermal disinfection unit

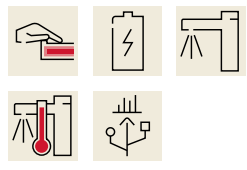
thermal disinfection
yes
automatic thermal disinfection

F5E-Therm thermostatic mixer DN 15 for wall mounting, for shower facilities. Electronically controlled, for connection to hot water and cold water. Thermostat with metal handle and adjustable, turn-proof temperature stop. With option for thermal disinfection, manually or automatically via pre-assembled disinfection unit. Control electronics, solenoid valve cartridge, 6 V lithium battery (CR-P2) and touch sensor in scald-protected safe-touch housing, with

hand-shower connection, G 1/2 B. Full-metal version, high-polished chromium-plated brass. With adjustable and lockable connections with backflow preventer and strainers, completely covered with depth-adjustable screw rosettes. Activated water hygiene flushing 24 hours after last activation and saving of statistical data. With option for parameterization and communication via optional, bidirectional remote control.

Technical Data
additional connections
with backflow preventer
calculation flow rate cold wat
calculation flow rate hot wate
circulation
connection with pay water disp
default automatic hygiene flus
default flow time
with filter
adjustable flow time
functional principle
for hand shower
hygiene flushing
diameter nominal
inlet size
Locking mechanism
material casing
material fitting
maximum flow time
minimum flow pressure
minimum flow time
type of mixing

no
yes
0.15 l/s
0.15 l/s
no
not possible
24h after the last activity
30 Seconds
yes
yes
electronic self-closing
yes
yes
DN 15
G 1/2 B
Top section, non-ceramic
brass
brass
255 Seconds
1 bar
1 Seconds
with thermostat



KWC F5E-Therm electronic thermostatic wall-mounted mixer with hand-shower connection and battery operation

Modell-Linie: F5E | F5ET2008
Showers | Electronic self closing shower

number of batteries	1
Parameterization	remote control
power supply connection	Battery 6 V
power consumption	1.5 Voltampere
Type of power supply	Battery
protective system IP	IP59K
with rosettes/cover plate	yes
protective shutdown	yes
shower pipe draining	no
sound insulation	no
surface finish casing	chromed
surface finish fitting	chromed
surface treatment fitting	polished
temperature limit	yes
thermal disinfection	automatic thermal disinfection
with transformer/power supply	no
type of batteries	CR-P2 Lithium battery 6V
type of mounting	wall mounting
type of operation	sensor operation
type of sensor	opto-electronic sensor
type of shower	wall fitting
Volume flow rate bypass PWH	0.05 l/s
volume flow rate at 3 bar	0.23 l/s
water connection	S-connections
position of water connection	from backside
Accent colour	none
Basic colour	chrome-look (glossy)

Optional Accessories



Bidirectional remote control for electronic fittings F3 and F5

2030036654
ACEX9005



2-button remote control for fittings F3 and F5

2030036849
ACEX9004



Hand shower

2030051216
ACXX2007



Shower bracket

2030051217
ACXX2008

Spare Parts

KWC F5E-Therm electronic thermostatic wall-mounted mixer with hand-shower connection and battery operation

Modell-Linie: F5E | F5ET2008
Showers | Electronic self closing shower



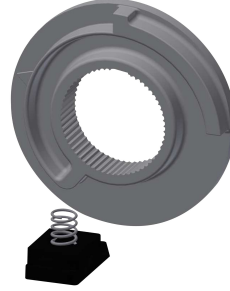
Cover

2030003258
EAQLT0002



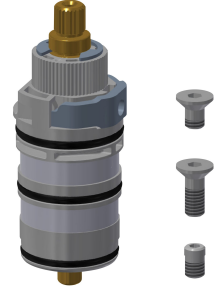
Temperature handle

2030047082
ASXT9003



Temperature stop

2030003296
EAQLT0003



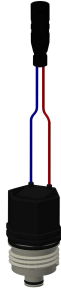
Thermocouple

2030003300
EAQLT0004



Sensor, ID 12/00001

2030041460
ASET2001



Solenoid valve cartridge

2030003033
EAQFU0001



Lithium battery 6 V

2000104846
EPRTR0008



Solenoid valve cartridge

2030045522
ACXX9002



Screw rosette

2030046777
ASXX9003



Mounting set

2030003401
EAQLT0009



Hexagonal socket wrench

2030047722
ACEX9011