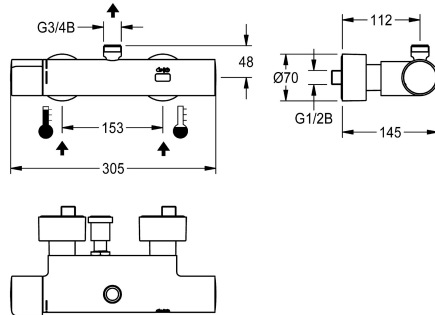


KWC F5E-Therm

Electronic thermostatic wall-mounted mixer for separate power supply

Modell-Linie: F5E | F5ET2009

Showers | Electronic self closing shower



KWC-No.

2030039542

2030039550

Version with pre-assembled thermal disinfection unit

thermal disinfection

yes

automatic thermal disinfection

F5E-Therm thermostatic mixer DN 15 for wall mounting, for shower facilities. Electronically controlled, for connection to hot water and cold water. Thermostat with metal handle and adjustable, turn-proof temperature stop. With option for thermal disinfection, manually or automatically via pre-assembled disinfection unit. Control electronics, solenoid valve cartridge and touch sensor in scald-protected safe-touch housing with outlet on top, G 3/4 B, for installation of bent outlet or surface-mounted shower pipe. All-metal

construction, high-polished chromium-plated brass. With adjustable and lockable connections with backflow preventer and strainers, completely covered with depth-adjustable screw rosettes. Activated water hygiene flushing 24 hours after last activation and saving of statistical data. With option for parameterization and communication via optional, bidirectional remote control. Separate power supply via power supply unit 6.75 V / 12 V DC or AQUA 3000 open system accessories.

Technical Data

additional connections

no

with backflow preventer

yes

calculation flow rate cold wat

0.15 l/s

calculation flow rate hot water

0.15 l/s

circulation

no

compatible A3000 open

yes

connection with pay water disp

via electronic module

default automatic hygiene flus

24h after the last activity

default flow time

30 Seconds

with filter

yes

adjustable flow time

yes

functional principle

electronic self-closing

for hand shower

no

hygiene flushing

yes

diameter nominal

DN 15

inlet size

G 1/2 B

Locking mechanism

Top section, non-ceramic

material casing

brass

material fitting

brass

maximum flow time

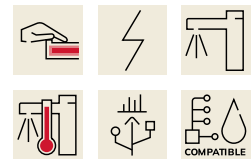
255 Seconds

minimum flow pressure

1 bar

minimum flow time

1 Seconds



KWC F5E-Therm

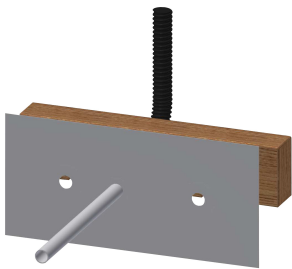
Electronic thermostatic wall-mounted mixer for separate power supply

Modell-Linie: F5E | F5ET2009

Showers | Electronic self closing shower

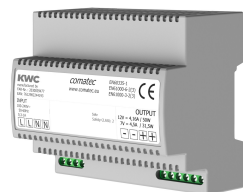
type of mixing	with thermostat
Parameterization	remote control
power supply connection	6,75 / 12 VDC / A3000 open
position of power connection	from backside
power consumption	1,5 Voltampere
Type of power supply	Transformer
with rosettes/cover plate	yes
protective shutdown	yes
shower pipe draining	no
sound insulation	no
surface finish casing	chromed
surface finish fitting	chromed
surface treatment fitting	polished
temperature limit	yes
thermal disinfection	automatic thermal disinfection
with transformer/power supply	no
type of mounting	wall mounting
type of operation	sensor operation
type of sensor	opto-electronic sensor
type of shower	wall fitting
Volume flow rate bypass PWH	0.05 l/s
volume flow rate at 3 bar	0.23 l/s
water connection	S-connections
position of water connection	from backside
Accent colour	none
Basic colour	chrome-look (glossy)

Mandatory Accessories



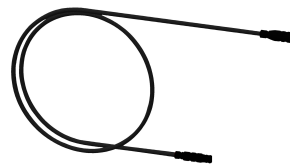
Mounting bar for F5 wall-mounted mixers

2030071303
F5BTX002



Power supply unit

2030039477
ACEX9001



Extension cable 5 m

2030043814
ACEX9010

Optional Accessories

KWC F5E-Therm

Electronic thermostatic wall-mounted mixer for separate power supply

Modell-Linie: F5E | F5ET2009

Showers | Electronic self closing shower



Bent outlet

2030050434
ACXX2005



Bent outlet

2030050435
ACXX2006



Shower pipe

2030041525
ACXX2003



AQUAJET-Slimline shower head

2000103757
AQUA757



AQUAJET-Comfort shower head

2030021283
SHAC0008



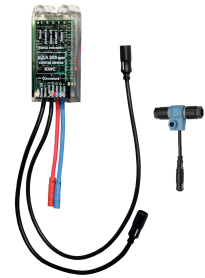
Bidirectional remote control for electrical fittings F3 and F5

2030036654
ACEX9005



2-button remote control for fittings F3 and F5

2030036849
ACEX9004



Electronic module EM5 for F5 shower taps

2030041918
ACET2001

Spare Parts



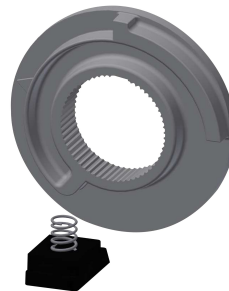
Cover

2030003258
EAQLT0002



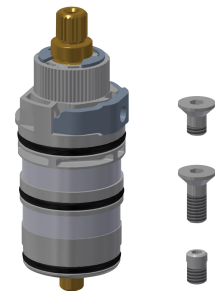
Temperature handle

2030050541
ASXT9004



Temperature stop

2030003296
EAQLT0003



Thermocouple

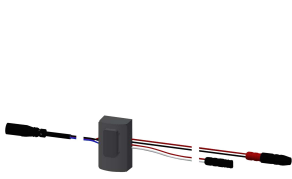
2030003300
EAQLT0004

KWC F5E-Therm

Electronic thermostatic wall-mounted mixer for separate power supply

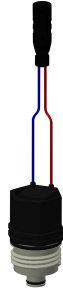
Modell-Linie: F5E | F5ET2009

Showers | Electronic self closing shower



Sensor, ID 12/00001

2030041460
ASET2001



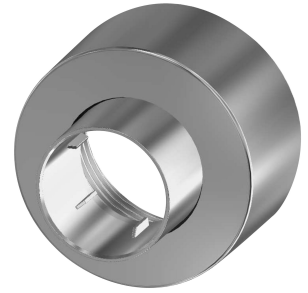
Solenoid valve cartridge

2030003033
EAQFU0001



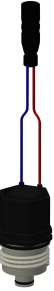
Mounting set

2030003401
EAQLT0009



Screw rosette

2030046777
ASXX9003



Solenoid valve cartridge

2030045522
ACXX9002



Hexagonal socket wrench

2030047722
ACEX9011