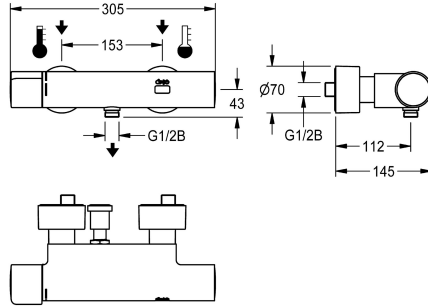


KWC F5E-Therm

Electronic thermostatic wall-mounted mixer for separate power supply, with hand-shower connection

Modell-Linie: F5E | F5ET2010

Showers | Electronic self closing shower



KWC-No.

2030039543

2030039551

Version with pre-assembled thermal disinfection unit

thermal disinfection

yes

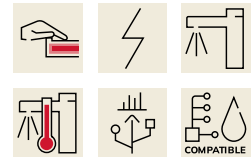
automatic thermal disinfection

F5E-Therm thermostatic mixer DN 15 for wall mounting, for shower facilities. Electronically controlled, for connection to hot water and cold water. Thermostat with metal handle and adjustable, turn-proof temperature stop. With option for thermal disinfection, manually or automatically via pre-assembled disinfection unit. Control electronics, solenoid valve cartridge and touch sensor in scald-protected safe-touch housing, with hand-shower connection, G 1/2 B. Full-metal version, high-polished chromium-plated brass.

With adjustable and lockable connections with backflow preventer and strainers, completely covered with depth-adjustable screw rosettes. Activated water hygiene flushing 24 hours after last activation and saving of statistical data. With option for parameterization and communication via optional, bidirectional remote control. Separate power supply via power supply unit 6.75 V / 12 V DC or AQUA 3000 open system accessories.

Technical Data

additional connections	no
with backflow preventer	yes
calculation flow rate cold water	0.15 l/s
calculation flow rate hot water	0.15 l/s
circulation	no
compatible A3000 open	yes
connection with pay water disp	via electronic module
default automatic hygiene flush	24h after the last activity
default flow time	30 Seconds
with filter	yes
adjustable flow time	yes
functional principle	electronic self-closing
for hand shower	yes
hygiene flushing	yes
diameter nominal	DN 15
inlet size	G 1/2 B
Locking mechanism	Top section, non-ceramic
material casing	brass
material fitting	brass
maximum flow time	255 Seconds
minimum flow pressure	1 bar
minimum flow time	1 Seconds



KWC F5E-Therm

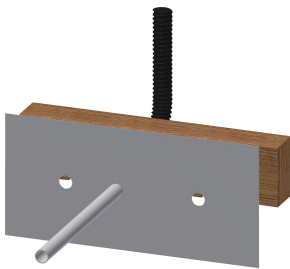
Electronic thermostatic wall-mounted mixer for separate power supply, with hand-shower connection

Modell-Linie: F5E | F5ET2010

Showers | Electronic self closing shower

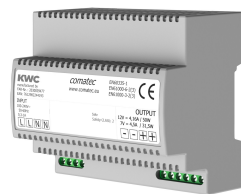
type of mixing	with thermostat
Parameterization	remote control
power supply connection	6,75 / 12 VDC / A3000 open
position of power connection	from backside
power consumption	1,5 Voltampere
Type of power supply	Transformer
with rosettes/cover plate	yes
protective shutdown	yes
shower pipe draining	no
sound insulation	no
surface finish casing	chromed
surface finish fitting	chromed
surface treatment fitting	polished
temperature limit	yes
thermal disinfection	automatic thermal disinfection
with transformer/power supply	no
type of mounting	wall mounting
type of operation	sensor operation
type of sensor	opto-electronic sensor
type of shower	wall fitting
Volume flow rate bypass PWH	0.05 l/s
volume flow rate at 3 bar	0.23 l/s
water connection	S-connections
position of water connection	from backside
Accent colour	none
Basic colour	chrome-look (glossy)

Mandatory Accessories



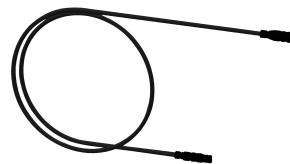
Mounting bar for F5 wall-mounted mixers

2030071303
F5BTX002



Power supply unit

2030039477
ACEX9001



Extension cable 5 m

2030043814
ACEX9010

Optional Accessories

KWC F5E-Therm

Electronic thermostatic wall-mounted mixer for separate power supply, with hand-shower connection

Modell-Linie: F5E | F5ET2010

Showers | Electronic self closing shower



Bidirectional remote control for electronic fittings F3 and F5

2030036654
ACEX9005



2-button remote control for fittings F3 and F5

2030036849
ACEX9004



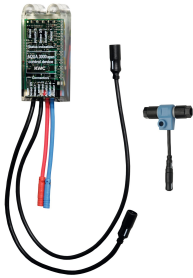
Hand shower

2030051216
ACXX2007



Shower bracket

2030051217
ACXX2008



Electronic module EM5 for F5 shower taps

2030041918
ACET2001

Spare Parts



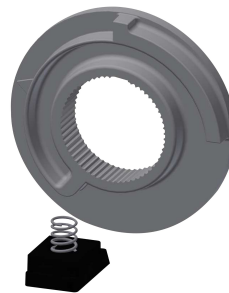
Cover

2030003258
EAQLT0002



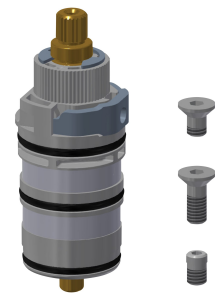
Temperature handle

2030050541
ASXT9004



Temperature stop

2030003296
EAQLT0003



Thermocouple

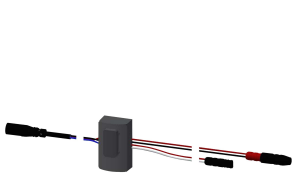
2030003300
EAQLT0004

KWC F5E-Therm

Electronic thermostatic wall-mounted mixer for separate power supply, with hand-shower connection

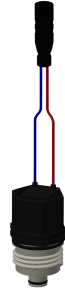
Modell-Linie: F5E | F5ET2010

Showers | Electronic self closing shower



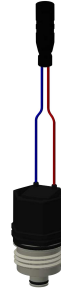
Sensor, ID 12/00001

2030041460
ASET2001



Solenoid valve cartridge

2030045522
ACXX9002



Solenoid valve cartridge

2030003033
EAQFU0001



Mounting set

2030003401
EAQLT0009



Screw rosette

2030046777
ASXX9003



Hexagonal socket wrench

2030047722
ACEX9011