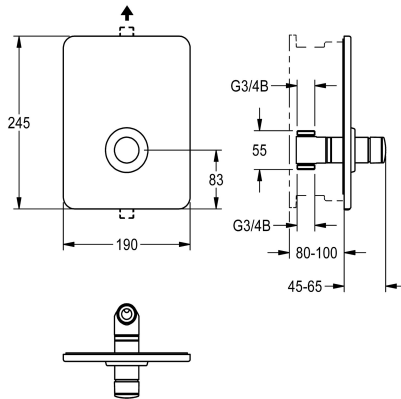


## KWC

### F3S self-closing in-wall valve

Modell-Linie: F3S | F3SV2005

Showers | Self closing showers



#### KWC-No.

**2030040072**

F3S self-closing straight-way valve DN 15 as finished installation kit for installation in basic installation kit, for shower facilities. Self-closing functional part, hydraulically controlled, piston-free design, self-closing, stepless adjustment of flow duration. For connection to pre-mixed hot water or cold water. Housing including changeable

valve seat, visible parts, high-polished chromium-plated brass. Holding frame including profile seal, stainless steel cover plate 190 x 245 mm with covered screw fixing and rosette. Depth adjustability 20 mm.

#### Technical Data

additional connections	no
with backflow preventer	no
Built-in fitting model	Finishing section
calculation flow rate cold wat	0.15 l/s
circulation	no
connection with pay water disp	not possible
Cover plate height	245 mm
Cover plate width	190 mm
with filter	yes
adjustable flow time	yes
functional principle	hydraulic self-closing
for hand shower	no
hygiene flushing	no
diameter nominal	DN 15
inlet size	G 3/4 B
Locking mechanism	Top section, non-ceramic
material casing	stainless steel
material fitting	brass-look
maximum flow time	35 Seconds
minimum flow pressure	1 bar
minimum flow time	5 Seconds
type of mixing	no
with rosettes/cover plate	yes
protective shutdown	no
shower pipe draining	no

## KWC

### F3S self-closing in-wall valve

Modell-Linie: F3S | F3SV2005

Showers | Self closing showers

sound insulation	no
surface finish casing	satin finished
surface finish fitting	chromed
surface treatment fitting	polished
temperature limit	no
thermal disinfection	no
with transformer/power supply	no
type of mounting	in-wall installation with box
type of operation	manual operation
type of shower	in-wall fitting
volume flow rate at 3 bar	0.2 l/s
water connection	threaded connection (external)
position of water connection	from bottom
Accent colour	chrome-look (glossy)
Basic colour	stainless steel-look

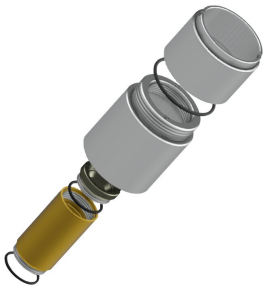
#### Mandatory Accessories



#### R3 system box for in-wall valves

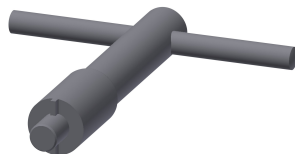
**2030040069**  
F3BV2001

#### Optional Accessories



#### Extension set

**2000101451**  
AQRM900



#### Valve seat key

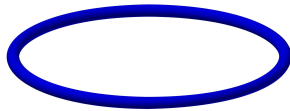
**2000101454**  
AQRM967

#### Spare Parts



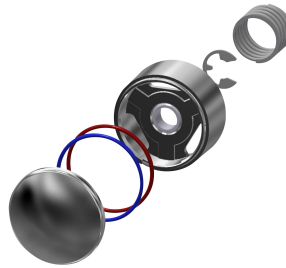
O-Ring, red

**2030042961**  
ASSV2002



O-Ring, blue

**2030042962**  
ASSV2003



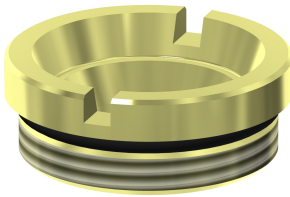
Push cap

**2030042960**  
ASSV2001



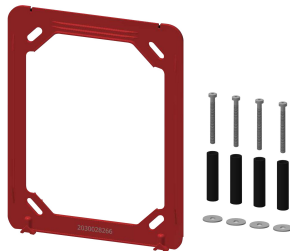
Functional part

**2000104352**  
ESHOW0001



Valve seat DN 15

**2000104790**  
ESHOW0040



Holding frame

**2030045472**  
ASXX9004



Cover plate stainless steel

**2030049685**  
ASSV2004



Stainless steel care set

**2000109019**  
ZWSPL0024



Cleaning product CHROMOL

**2000105091**  
ZWSPL0023



Hexagonal socket wrench

**2000106127**  
ZFITG0003