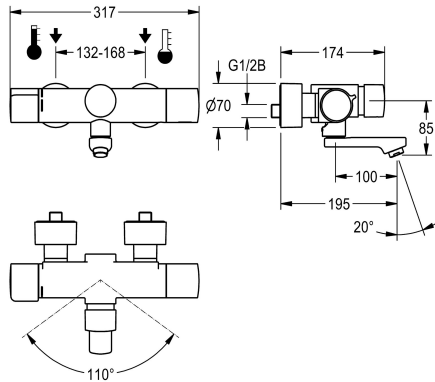


KWC F5S-Therm Self-closing thermostatic wall-mounted mixer

Modell-Linie: F5S | F5ST1005
Taps | Self closing taps



KWC-No.

2030040243

Projection 195 mm

2030040242

Projection 135 mm

2030040288

Projection 255 mm

spout projection

195 mm

135 mm

255 mm

F5S-Therm self-closing thermostat wall mixer DN 15 for wall mounting with lockable swivelling spout, for sanitary facilities. Hydraulically controlled, connects to hot water and cold water. With a pre-assembled hygiene unit including sensor with control electronics and 6 V lithium battery (CR-P2) for automatic hygiene flushing and storage of statistical data. FRAMIC self-closing cartridge, hydraulically controlled, low-maintenance and stagnation-free, with ceramic disc technology, self-closing, flow pressure-independent due to medium-separated design. Stepless adjustment of flow duration. Thermostat with metal handle with

adjustable and turn-proof temperature stop, with option for performance of manual thermal disinfection. Scald-protected, safe-touch housing, all-metal construction, high-polished chromium-plated brass. Laminar jet controller with integrated flow regulator 6.0 l/min. With adjustable and lockable connections with backflow preventer and strainers, completely covered with depth-adjustable screw rosettes. Projection 195 mm. Activated hygiene flushing, fixed interval of 24 hours. With option for parameterization and communication via optional, bidirectional remote control.

Technical Data

with backflow preventer

yes

calculation flow rate cold wat

0.07 l/s

calculation flow rate hot wate

0.07 l/s

compatible A3000 open

no

default automatic hygiene flus

fixed interval 24 hours

depressurised

no

with filter

yes

adjustable flow time

yes

functional principle

hydraulic self-closing

hygiene flushing

yes

diameter nominal

DN 15

inlet size

G 1/2 B

Locking mechanism

Top section, ceramic

material fitting

brass

maximum flow time

35 Seconds

minimum flow pressure

1 bar

minimum flow time

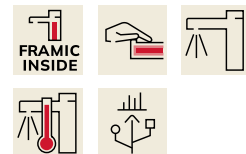
5 Seconds

type of mixing

with thermostat

number of batteries

1



KWC F5S-Therm

Self-closing thermostatic wall-mounted mixer

Modell-Linie: F5S | F5ST1005

Taps | Self closing taps

| | |
|-------------------------------|-----------------------------|
| Parameterization | remote control |
| Pop-up waste set | no |
| power supply connection | Battery 6 V |
| power consumption | 1.5 Voltampere |
| Type of power supply | Battery |
| protective system IP | IP59K |
| with rosettes/cover plate | yes |
| protective shutdown | no |
| sound insulation | no |
| Spout | rotating, bottom |
| spout projection | 195 mm |
| surface finish fitting | chromed |
| surface treatment fitting | polished |
| temperature limit | yes |
| thermal disinfection | manual thermal disinfection |
| with transformer/power supply | no |
| type of batteries | CR-P2 Lithium battery 6V |
| type of mounting | wall mounting |
| type of operation | manual operation |
| type of sensor | opto-electronic sensor |
| type of tap | bib tap |
| volume flow rate at 3 bar | 0.1 l/s |
| water connection | S-connections |
| Accent colour | none |
| Basic colour | chrome-look (glossy) |

Optional Accessories



**Bidirectional remote control for
electronical fittings F3 and F5**

2030036654
ACEX9005



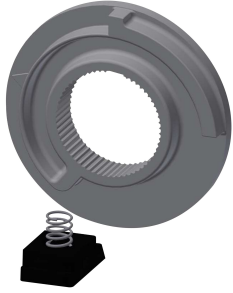
**2-button remote control for fittings F3
and F5**

2030036849
ACEX9004

Spare Parts

KWC F5S-Therm Self-closing thermostatic wall-mounted mixer

Modell-Linie: F5S | F5ST1005
Taps | Self closing taps



Temperature stop

2030003296
EAQLT0003



Plug chromed

2030053006
ASSX9004



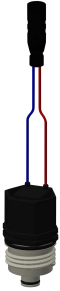
Safety ring

2030048357
ASSX9003



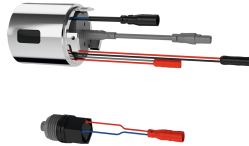
FRAMIC Self-closing cartridge

2030046145
ASSX9001



Solenoid valve cartridge

2030045522
ACXX9002



Hygiene unit for F5S-Therm

2030041162
ACST9001