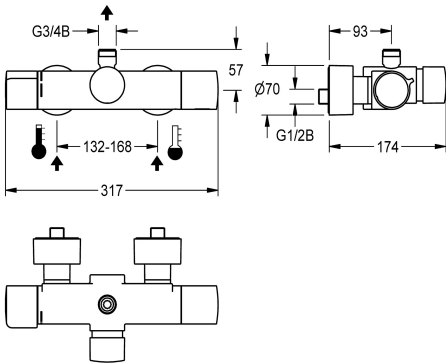


KWC F5S-Therm
Self-closing thermostatic wall-mounted mixer

Modell-Linie: F5S | F5ST2009
Showers | Self closing showers



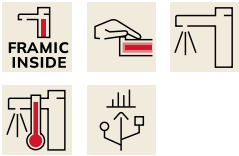
KWC-No.
2030040291

F5S-Therm self-closing thermostatic wall-mounted mixer DN 15 for wall mounting, for shower facilities. Hydraulically controlled, connects to hot and cold water. With a pre-assembled hygiene unit including sensor with control electronics and 6 V lithium battery (CR-P2) for performing an automatic water hygiene flushing and storage of statistical data. FRAMIC self-closing cartridge, hydraulically controlled, low-maintenance and stagnation-free, with ceramic disc technology, self-closing, flow pressure-independent due to medium-separated design. Stepless adjustment of flow duration. Thermostat with metal handle with adjustable and turn-proof

temperature stop, with the option for a manual thermal disinfection. Scald-protected Safe-Touch housing with outlet on top, G 3/4 B, for installation of bent outlet or wall-mounted shower pipe. All-metal construction, high-polished chromium-plated brass. With adjustable and turn-proof connections with backflow preventer and strainers, completely covered with depth-adjustable screw rosettes. Activated water hygiene flushing, fixed interval of 24 hours. With option for parameterization and communication via optional, bidirectional remote control.

Technical Data

additional connections	no
with backflow preventer	yes
calculation flow rate cold wat	0.15 l/s
calculation flow rate hot wate	0.15 l/s
circulation	no
compatible A3000 open	no
connection with pay water disp	not possible
default automatic hygiene flus	fixed interval 24 hours
with filter	yes
adjustable flow time	yes
functional principle	hydraulic self-closing
for hand shower	no
hygiene flushing	yes
diameter nominal	DN 15
inlet size	G 1/2 B
Locking mechanism	Top section, ceramic
material fitting	brass
maximum flow time	35 Seconds
minimum flow pressure	1 bar
minimum flow time	5 Seconds
type of mixing	with thermostat
number of batteries	1



KWC F5S-Therm
Self-closing thermostatic wall-mounted mixer

Modell-Linie: F5S | F5ST2009
Showers | Self closing showers

Parameterization	remote control
power supply connection	Battery 6 V
power consumption	1.5 Voltampere
Type of power supply	Battery
protective system IP	IP59K
with rosettes/cover plate	yes
protective shutdown	no
shower pipe draining	no
sound insulation	no
surface finish fitting	chromed
surface treatment fitting	polished
temperature limit	yes
thermal disinfection	manual thermal disinfection
with transformer/power supply	no
type of batteries	CR-P2 Lithium battery 6V
type of mounting	wall mounting
type of operation	manual operation
type of sensor	opto-electronic sensor
type of shower	wall fitting
volume flow rate at 3 bar	0.2 l/s
water connection	S-connections
position of water connection	from backside
Accent colour	none
Basic colour	chrome-look (glossy)

Optional Accessories



Bent outlet

2030050434
ACXX2005



Bent outlet

2030050435
ACXX2006



Shower pipe

2030041522
ACSX2002



AQUAJET-Slimline shower head

2000103757
AQUA757

KWC F5S-Therm
Self-closing thermostatic wall-mounted mixer

Modell-Linie: F5S | F5ST2009
Showers | Self closing showers



AQUAJET-Comfort shower head

2030021283
SHAC0008



Bidirectional remote control for electrical fittings F3 and F5

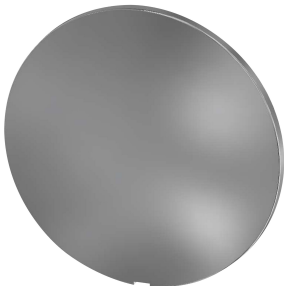
2030036654
ACEX9005



2-button remote control for fittings F3 and F5

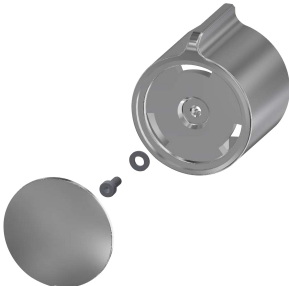
2030036849
ACEX9004

Spare Parts



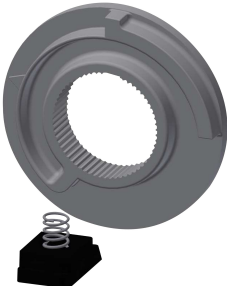
Cover

2030003258
EAQLT0002



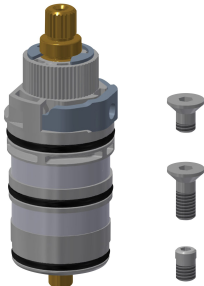
Temperature handle

2030050541
ASXT9004



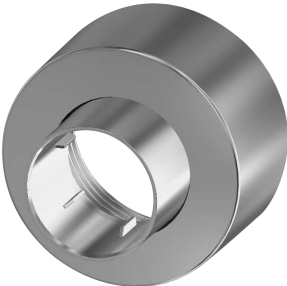
Temperature stop

2030003296
EAQLT0003



Thermocouple

2030003300
EAQLT0004



Screw rosette

2030046777
ASXX9003



Mounting set

2030003401
EAQLT0009



Plug chromed

2030053006
ASSX9004



Push cap

2030050542
ASST9001



KWC F5S-Therm
Self-closing thermostatic wall-mounted mixer

Modell-Linie: **F5S | F5ST2009**
Showers | Self closing showers



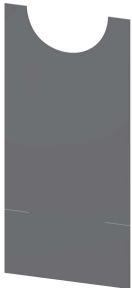
Safety ring

2030048357
ASSX9003



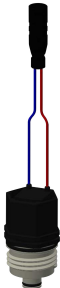
FRAMIC Self-closing cartridge

2030046145
ASSX9001



F5 Foil

2030053034
ASET2010



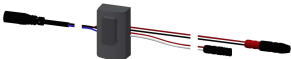
Solenoid valve cartridge

2030045522
ACXX9002



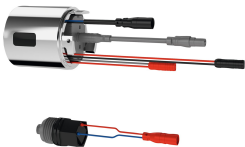
Lithium battery 6 V

2000104846
EPRTR0008



Sensor, ID 81/00001

2030041485
ASLM9001



Hygiene unit for F5S-Therm

2030041162
ACST9001



Hexagonal socket wrench

2030047722
ACEX9011