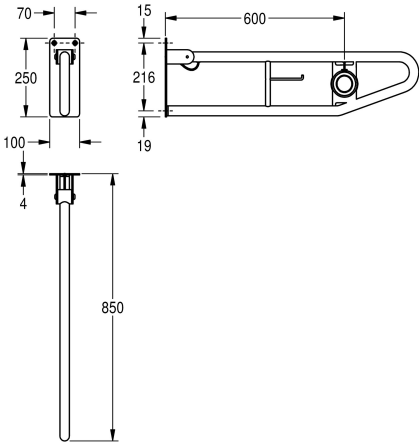
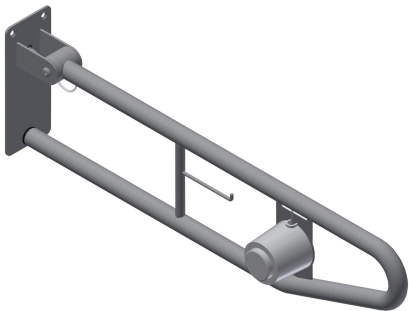




KWC CONTINA
Hinged grab rail

Modell-Linie: CONTINA | CNTX70G
Grab rails | Grab rail



KWC-No.

2030040945

Dimensions 100 x 250 x 850 mm (W x H x D)

Foldable grab rail with flushing button for wall mounting, stainless steel, surface satin finished, rough polishing for better surface feel, 32 mm pipe diameter, material thickness 1.2 mm, integrated toilet roll holder, pneumatic flush button in front area, flush button optional on right or left side, prevention against unmeant folding, gum rubber stop absorber, 4 mm thick mounting plate with three fixing holes,

included flushing mechanism contains 2 m pneumatic tube and set for assembling to Geberit cistern, includes stainless steel screws and dowels.

Dimensions 100 x 250 x 850 mm (W x H x D)

Technical Data

back	no
bending angle	180 Degree
colour	No colour
number of fixing points	1
hidden fixing	no
hinged	yes
material	stainless steel
material code	1.4301 Chrome Nickel steel V2A
material thickness	1.2 mm
overall depth	850 mm
overall height	249 mm
overall width	100 mm
pipe diameter	32 mm
surface finish	satin finished