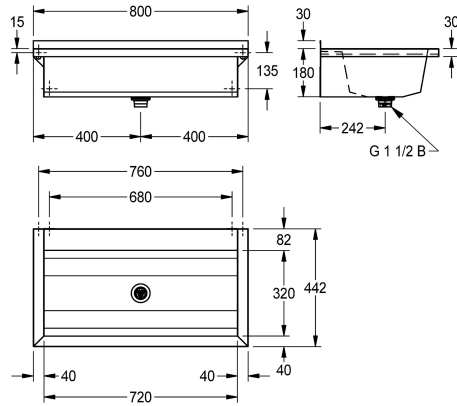


KWC PLANOX

Wash trough

Modell-Linie: PLANOX | PL8TCS

Washbasins & Washtroughs | Washtroughs



KWC-No.

2030043792

Length 800 mm

overall width

800 mm

PLANOX seamless welded washtrough for wall mounting, chromium steel, surface high polished, material thickness of washtrough 0.8 mm / side panels 1.2 mm, side panels with integrated wall brackets, lowered tap ledge 80 mm, without tap holes or overflow, 40 mm rear upstand, central waste, G 1 1/2 B

strainer waste, includes mounting materials. For a length of 1800 mm or more, an additional bracket is supplied. Special lengths are available on request.

Dimensions 800 x 210 x 442 mm (W x H x D)

Technical Data

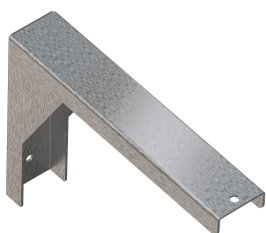
splash back height	30 mm
bowl - bowl height	180 mm
bowl - depth	320 mm
bowl - width	720 mm
material	stainless steel
material code	1.4016 Chromesteel
number of waste holes	1
overall depth	442 mm
overall height	210 mm
overall width	800 mm
rear upstand	no
splash back	optional
surface finish	high polished
tap ledge	yes
type of mounting	wall mounting
type of waste kit	perforated waste
waste hole position	centre
waste hole projection	242 mm
waste kit included	yes

Optional Accessories

KWC PLANOX

Wash trough

Modell-Linie: **PLANOX | PL8TCS**
Washbasins & Washtroughs | Washtroughs



Bracket for PLANOX washtroughs

2030043812
PL18SU



SATURN set of towel rails

2030046200
TB80