

KWC-No.
<b>2030043777</b> Length 600 mm
<b>2030043778</b> Length 800 mm
<b>2030046721</b>
<b>2030043779</b> Length 1200 mm
<b>2030043780</b> Length 1600 mm
<b>2030043781</b> Length 1800 mm
<b>2030043782</b> Length 2400 mm
<b>2030043783</b> Length 3000 mm

overall width
600 mm
800 mm
1,000 mm
1,200 mm
1,600 mm
1,800 mm
2,400 mm
3,000 mm

PLANOX seamless welded wash trough for wall mounting, chromium nickel steel, satin finished surface, material thickness of wash trough 0.8 mm / side panels 1.2 mm, side panels with integrated wall brackets, without tap ledge or overflow, 40 mm rear upstand, drainage central, G 1 1/2 B

strainer waste, includes mounting materials. For a length of 1800 mm or more, an additional bracket is supplied. Special lengths are available on request.

Dimensions 1000 x 210 x 382 mm (W x H x D)

Technical Data
bowl - bowl height
bowl - depth
bowl - width
material
material code
material thickness
overall depth
overall height
overall width
splash back
surface finish
tap ledge
type of mounting

180 mm
320 mm
980 mm
stainless steel
1.4301 Chrome Nickel steel V2A
0.8 mm
382 mm
210 mm
1,000 mm
optional
satin finished
no
wall mounting

## KWC

Modell-Linie: **PLANOX | PL10**

Washbasins & Washtroughs | Washtroughs

type of waste kit

perforated waste

waste hole position

centre side

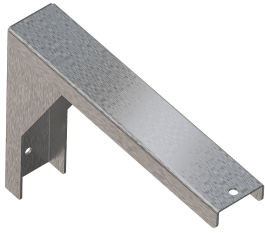
waste hole projection

182 mm

waste kit included

yes

### Optional Accessories



#### Bracket for PLANOX washtroughs

**2030043812**

PL18SU