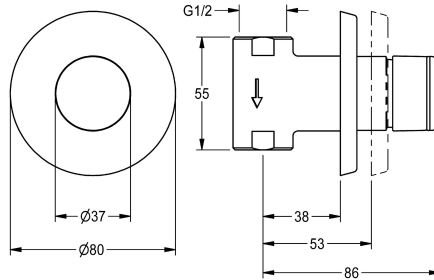


KWC

F3S self-closing gate valve

Modell-Linie: F3S | F3SV1003

Taps | Self closing taps



KWC-No.

2030048760

F3S self-closing DN 15 shower valve for wall mounting with noise-reducing styrene cladding. Self-closing hydraulically controlled functional part with a piston-free design, and continuously adjustable flow duration. For connection to pre-mixed hot water or

cold water. Housing includes shuttle valve position, with interior thread G 1/2, visible parts made of high-polished chrome-plated brass. With rosette, depth adjustability 15 mm.

Technical Data

with backflow preventer

no

Built-in fitting model

Built-in + finishing section

compatible A3000 open

no

depressurised

no

with filter

no

adjustable flow time

yes

functional principle

hydraulic self-closing

hygiene flushing

no

diameter nominal

DN 15

inlet size

G 1/2

Locking mechanism

Top section, non-ceramic

material fitting

brass-look

maximum flow time

20 Seconds

minimum flow pressure

1 bar

minimum flow time

5 Seconds

type of mixing

no

Pop-up waste set

no

with rosettes/cover plate

yes

protective shutdown

no

sound insulation

no

surface finish fitting

chromed

surface treatment fitting

polished

temperature limit

no

thermal disinfection

no

type of mounting

in-wall installation without b

type of operation

manual operation

KWC

F3S self-closing gate valve

Modell-Linie: F3S | F3SV1003

Taps | Self closing taps

type of tap

in-wall tap

volume flow rate at 3 bar

0.05 l/s

water connection

threaded connection (internal)

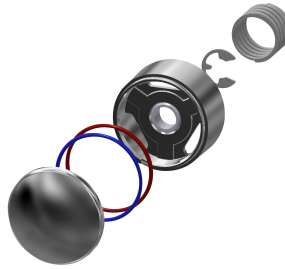
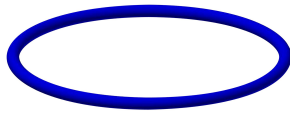
Accent colour

none

Basic colour

chrome-look (glossy)

Spare Parts



O-Ring, red

2030042961
ASSV2002

O-Ring, blue

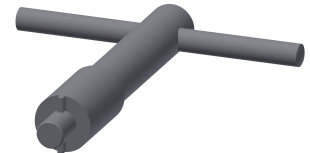
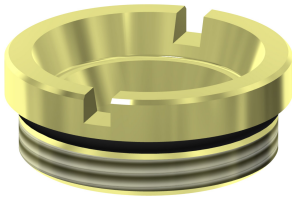
2030042962
ASSV2003

Push cap

2030042960
ASSV2001

Functional part

2000104372
ETAPS0001



Valve seat DN 15

2000104790
ESH0W0040

Push-on rosette

2000104892
EAQLN0008

Hexagonal socket wrench

2000106127
ZFITG0003

Valve seat key

2000101454
AQRM967