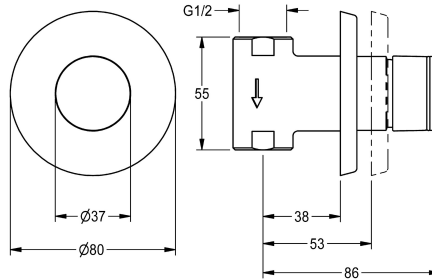


KWC

F3S self-closing gate valve

Modell-Linie: F3S | F3SV1003

Taps | Self closing taps



KWC-No.

2030048760

F3S self-closing DN 15 shower valve for wall mounting with noise-reducing styrene cladding. Self-closing hydraulically controlled functional part with a piston-free design, and continuously adjustable flow duration. For connection to pre-mixed hot water or

cold water. Housing includes shuttle valve position, with interior thread G 1/2, visible parts made of high-polished chrome-plated brass. With rosette, depth adjustability 15 mm.

Technical Data

with backflow preventer

no

Built-in fitting model

Built-in + finishing section

compatible A3000 open

no

depressurised

no

with filter

no

adjustable flow time

yes

functional principle

hydraulic self-closing

hygiene flushing

no

diameter nominal

DN 15

inlet size

G 1/2

Locking mechanism

Top section, non-ceramic

material fitting

brass

maximum flow time

20 Seconds

minimum flow pressure

1 bar

minimum flow time

5 Seconds

type of mixing

no

Pop-up waste set

no

with rosettes/cover plate

yes

protective shutdown

no

sound insulation

no

surface finish fitting

chromed

surface treatment fitting

polished

temperature limit

no

thermal disinfection

no

type of mounting

in-wall installation without b

type of operation

manual operation

KWC

F3S self-closing gate valve

Modell-Linie: F3S | F3SV1003

Taps | Self closing taps

type of tap

volume flow rate at 3 bar

water connection

Accent colour

Basic colour

in-wall tap

0.05 l/s

threaded connection (internal)

none

chrome-look (glossy)

Spare Parts



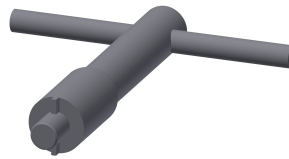
Functional part

2000104372
ETAPS0001



Hexagonal socket wrench

2000106127
ZFITG0003



Valve seat key

2000101454
AQRM967