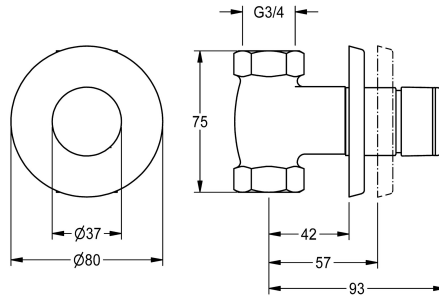


KWC

F3S Self-closing straight-way valve DN 20

Modell-Linie: F3S | F3SV2009

Showers | Self closing showers



KWC-No.

2030053188

F3S Self-closing straight-way valve DN 20 for in-wall mounting, for shower facilities. Self-closing functional part, hydraulically controlled, piston-free design, automatic closing, adjustable flow duration. For connection to pre-mixed hot water or cold water.

Housing including replaceable valve seat, with interior thread G 3/4, visible parts made of high-polished chrome-plated brass. With rosette, depth adjustability 15 mm.

Technical Data

additional connections	no
with backflow preventer	no
Built-in fitting model	Built-in section
calculation flow rate cold wat	0.3 l/s
circulation	no
compatible A3000 open	no
connection with pay water disp	not possible
with filter	no
adjustable flow time	yes
functional principle	hydraulic self-closing
for hand shower	no
hygiene flushing	no
diameter nominal	DN 20
inlet size	G 3/4
Locking mechanism	Top section, non-ceramic
material fitting	brass
maximum flow time	30 Seconds
minimum flow pressure	1 bar
minimum flow time	5 Seconds
type of mixing	no
with rosettes/cover plate	yes
protective shutdown	no
shower pipe draining	no
sound insulation	no
surface finish fitting	chromed
temperature limit	no

KWC

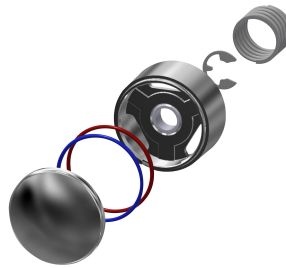
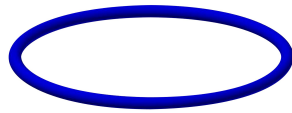
F3S Self-closing straight-way valve DN 20

Modell-Linie: F3S | F3SV2009

Showers | Self closing showers

thermal disinfection	no
type of mounting	in-wall installation without b
type of operation	manual operation
type of shower	in-wall fitting
volume flow rate at 3 bar	1.25 l/s
water connection	threaded connection (internal)
position of water connection	from bottom
Accent colour	none
Basic colour	chrome-look (glossy)

Spare Parts



O-Ring, red

2030042961
ASSV2002

O-Ring, blue

2030042962
ASSV2003

Push cap

2030042960
ASSV2001

Push-on rosette

2000104892
EAQLN0008