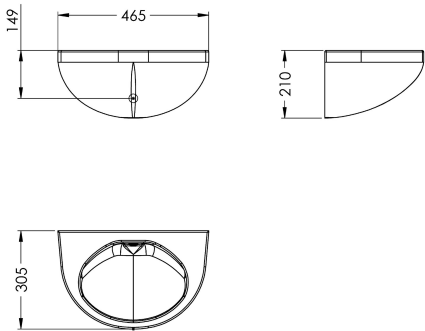


KWC  
Hand washbasin

Modell-Linie: DVS | VR99-081  
Washbasins & Washtroughs | Wash basins



KWC-No.

2030053464

Wall mounted hand wash basin, manufactured with 8 mm thick reinforced fiberglass and impact-resistant plastic. Seamless design with a white (RAL 9016) easy-care gel coat surface. Anti-ligature and vandal resistant design, for use in high-security areas. Oval bowl without overflow or tap hole, with a DN 32 waste.

Threaded M12 x 300 mm bolts for behind the wall mounted and siphon (not included) to be installed within a service room.

Dimensions 465 x 210 x 305 mm (W x H x D)  
Bowl dimensions 339 x 210 x 250 mm (W x H x D)

Technical Data

bowl - bowl height
bowl - depth
bowl - width
material
material thickness
overall depth
overall height
overall width
siphon diameter
siphon included

210 mm
250 mm
339 mm
synthetic
8 mm
305 mm
210 mm
465 mm
DN 32
no



Spare Parts

Stainless steel waste grid

2030060183

Rubber bung

2030060185



**KWC**  
Hand washbasin

**Modell-Linie: DVS | VR99-081**  
Washbasins & Washtroughs | Wash basins

VR01-032	VR01-033
----------	----------