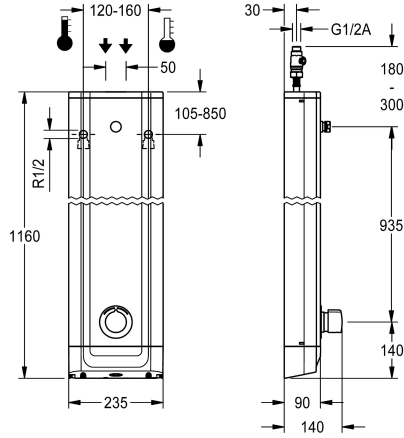


KWC F5S Mix stainless steel shower panel

Modell-Linie: F5S | F5SM2020
Showers | Self closing showers



KWC-No.

2030054248

2030056581

with automatic shower pipe draining

shower pipe draining

no

yes

F5S Mix shower panel made of stainless steel for wall mounting with DN 15 self-closing single control mixer and connecting nozzles for the shower head. FRAMIC self-closing mixing cartridge, hydraulically controlled, low maintenance and stagnation free, with ceramic disc technology, self-closing, flow pressure independent due to the medium-independent design. Stepless adjustment of flow duration. With adjustable, turn-proof temperature stop. For connection to hot water and cold water. All-metal construction, visible parts high-polished or chrome-plated. Connecting nozzles for

the required additional DN 15 KWC shower head with pre-fitted flow regulator 9.0 l/min. Housing made of stainless steel with raised function surface and plastic cover caps. Connecting hoses with lockable water volume control with backflow preventer and strainer.

Dimensions of housing 235 x 1160 x 90 mm (W x H x D)

Shower head to be ordered separately.

Technical Data

additional connections

no

with backflow preventer

yes

circulation

no

compatible A3000 open

no

connection with pay water disp

not possible

with filter

yes

adjustable flow time

yes

functional principle

hydraulic self-closing

for hand shower

no

hygiene flushing

no

diameter nominal

DN 15

inlet size

G 1/2 A

Locking mechanism

Top section, ceramic

material casing

stainless steel

material code casing

1.4301 Chrome Nickel steel V2A

material fitting

brass-look

maximum flow time

35 Seconds

minimum flow pressure

1.5 bar

minimum flow time

5 Seconds

type of mixing

yes

overall depth

90 mm



KWC

F5S Mix stainless steel shower panel

Modell-Linie: F5S | F5SM2020
Showers | Self closing showers

| | |
|------------------------------|----------------------------|
| overall height | 1,160 mm |
| overall width | 235 mm |
| with rosettes/cover plate | yes |
| protective shutdown | no |
| shower pipe draining | no |
| Shower head | for separately shower head |
| with shower set | no |
| sound insulation | no |
| surface finish casing | satin finished |
| surface finish fitting | chromed |
| surface treatment fitting | polished |
| temperature limit | yes |
| thermal disinfection | no |
| type of mounting | wall mounting |
| type of operation | manual operation |
| type of shower | shower panel |
| volume flow rate at 3 bar | 0.15 l/s |
| water connection | hose (gland nut) |
| position of water connection | from top / backside |
| with soap dish | no |
| Accent colour | chrome-look (glossy) |
| Basic colour | stainless steel-look |

Mandatory Accessories



AQUAJET-Slimline shower head for KWC shower panels and systems

2030054255
SHAS0011



AQUAJET-Comfort shower head for KWC shower panels and systems

2030054254
SHAC0011



MÜNCHEN shower head for KWC shower panels and systems

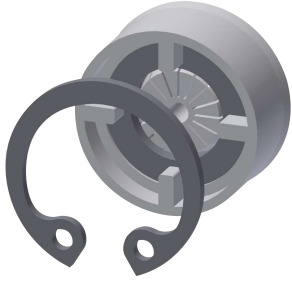
2030054793
SHMU0011

Optional Accessories

KWC

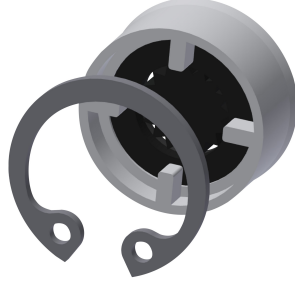
F5S Mix stainless steel shower panel

Modell-Linie: F5S | F5SM2020
Showers | Self closing showers



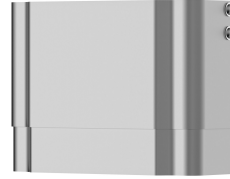
Flow controller 6.0 l/min

2030027586
ESHHE0004



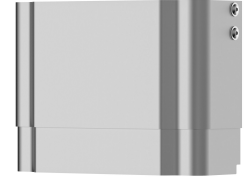
Flow controller 12.0 l/min

2000104783
ESHHE0002



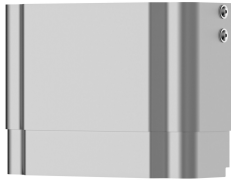
Housing extension for F5 shower panels made of stainless steel

2030057066
ACXX2011



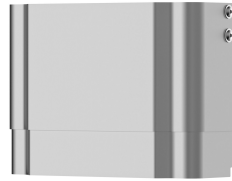
Housing extension for F5 shower panels made of stainless steel

2030057067
ACXX2012



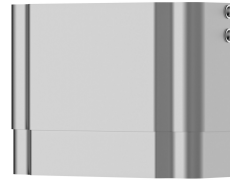
Housing extension for F5 shower panels made of stainless steel

2030057068
ACXX2013



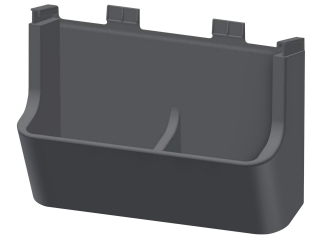
Housing extension for F5 shower panels made of stainless steel

2030057069
ACXX2014



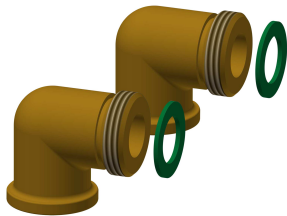
Housing extension for F5 shower panels made of stainless steel

2030057070
ACXX2015



Shower gel dish for F5 shower panels made of stainless steel

2030057077
ACXX2021



Connection set for shower panel

2000104916
ZSHOW0006



Connection adapter

2000101441
AQRM928

Spare Parts

KWC

F5S Mix stainless steel shower panel

Modell-Linie: F5S | F5SM2020
Showers | Self closing showers



Plug chromed

2030053006
ASSX9004



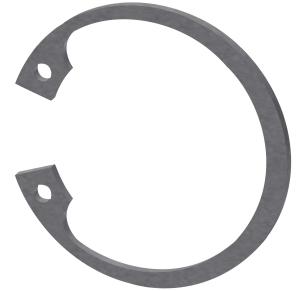
Handle push cap

2030050753
ASSM9004



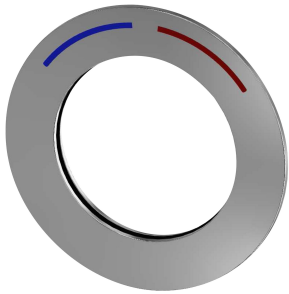
Temperature stop

2030046189
ASSM9002



Safety ring

2030048357
ASSX9003



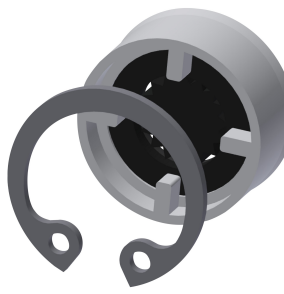
Rosette

2030045510
ASXM2003



FRAMIC self-closing mixing cartridge

2030046185
ASSM9001



Flow controller 9.0 l/min

2000104782
ESHHE0001



Stainless steel care set

2000109019
ZWSP0024



Cleaning product CHROMOL

2000105091
ZWSP0023