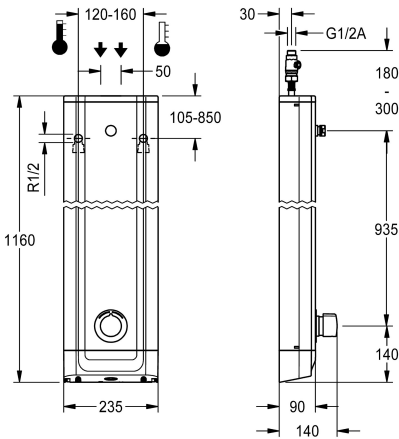


KWC F5S-Mix
Stainless steel shower panel

Modell-Linie: F5S | F5SM2020
Showers | Self closing showers



KWC-No.
2030054248
2030056581
with automatic shower pipe draining

F5S Mix shower panel made of stainless steel for wall mounting with DN 15 self-closing single control mixer and connecting nozzles for the shower head. FRAMIC self-closing mixing cartridge, hydraulically controlled, low maintenance and stagnation free, with ceramic disc technology, self-closing, flow pressure independent due to the medium-independent design. Stepless adjustment of flow duration. With adjustable, turn-proof temperature stop. For connection to hot water and cold water. All-metal construction, visible parts high-polished or chrome-plated. Connecting nozzles for

shower pipe draining
no
yes

the required additional DN 15 KWC shower head with pre-fitted flow regulator 9.0 l/min. Housing made of stainless steel with raised function surface and plastic cover caps. Connecting hoses with lockable water volume control with backflow preventer and strainer.

Dimensions of housing 235 x 1160 x 90 mm (W x H x D)
Shower head to be ordered separately.

Technical Data
additional connections
with backflow preventer
circulation
compatible A3000 open
connection with pay water disp
with filter
adjustable flow time
functional principle
for hand shower
hygiene flushing
diameter nominal
inlet size
Locking mechanism
material casing
material code casing
material fitting
maximum flow time
minimum flow pressure
minimum flow time
type of mixing
overall depth

no
yes
no
no
not possible
yes
yes
hydraulic self-closing
no
no
DN 15
G 1/2 A
Top section, ceramic
stainless steel
1.4301 Chrome Nickel steel V2A
brass-look
35 Seconds
1.5 bar
5 Seconds
yes
90 mm





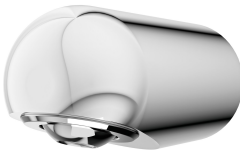


KWC F5S-Mix
Stainless steel shower panel

Modell-Linie: F5S | F5SM2020
Showers | Self closing showers

overall height	1,160 mm
overall width	235 mm
with rosettes/cover plate	yes
protective shutdown	no
shower pipe draining	no
Shower head	for separately shower head
with shower set	no
sound insulation	no
surface finish casing	satin finished
surface finish fitting	chromed
surface treatment fitting	polished
temperature limit	yes
thermal disinfection	no
type of mounting	wall mounting
type of operation	manual operation
type of shower	shower panel
volume flow rate at 3 bar	0.15 l/s
water connection	hose (gland nut)
position of water connection	from top / backside
with soap dish	no
Accent colour	chrome-look (glossy)
Basic colour	stainless steel-look

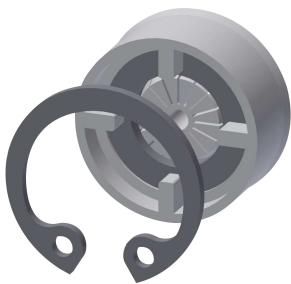
Mandatory Accessories

		
AQUAJET-Slimline shower head for KWC shower panels and systems	AQUAJET-Comfort shower head for KWC shower panels and systems	MÜNCHEN shower head for KWC shower panels and systems
2030054255 SHAS0011	2030054254 SHAC0011	2030054793 SHMU0011

Optional Accessories

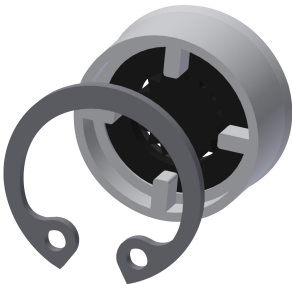
KWC F5S-Mix
Stainless steel shower panel

Modell-Linie: F5S | F5SM2020
Showers | Self closing showers



Flow controller 6.0 l/min

2030027586
ESHHE0004



Flow controller 12.0 l/min

2000104783
ESHHE0002



Housing extension for F5 shower
panels made of stainless steel

2030057066
ACXX2011



Housing extension for F5 shower
panels made of stainless steel

2030057067
ACXX2012



Housing extension for F5 shower
panels made of stainless steel

2030057068
ACXX2013



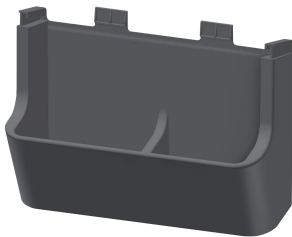
Housing extension for F5 shower
panels made of stainless steel

2030057069
ACXX2014



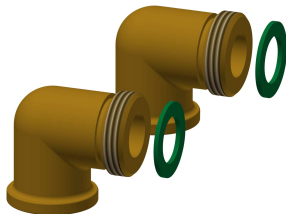
Housing extension for F5 shower
panels made of stainless steel

2030057070
ACXX2015



Shower gel dish for F5 shower panels
made of stainless steel

2030057077
ACXX2021



Connection set for shower panel

2000104916
ZSHOW0006



Connection adapter

2000101441
AQRM928

Spare Parts



KWC F5S-Mix
Stainless steel shower panel

Modell-Linie: **F5S | F5SM2020**
Showers | Self closing showers



Plug chromed

2030053006
ASSX9004



Handle push cap

2030050753
ASSM9004



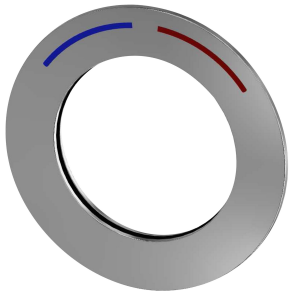
Temperature stop

2030046189
ASSM9002



Safety ring

2030048357
ASSX9003



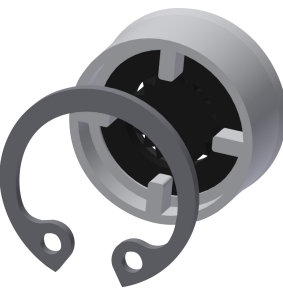
Rosette

2030045510
ASXM2003



FRAMIC self-closing mixing cartridge

2030046185
ASSM9001



Flow controller 9,0 l/min

2000104782
ESHHE0001



Stainless steel care set

2000109019
ZWSPL0024



Cleaning product CHROMOL

2000105091
ZWSPL0023