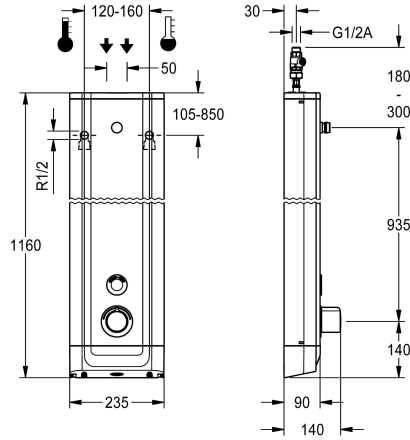


KWC F5E-Therm Stainless steel shower panel

Modell-Linie: F5E | F5ET2020
Showers | Electronic self closing shower



KWC-No.

2030054250

F5E Therm shower panel made of stainless steel for wall mounting with thermostatic mixer and connecting nozzles for the shower head. Electrically controlled, for connection to hot water and cold water. Shower valve with integrated solenoid valve cartridge, thermostat and mechanism for optional bypass solenoid valve cartridge to perform program-controlled thermal disinfection. Thermostat with metal handle, an adjustable and turn-proof temperature stop and an option for manual thermal disinfection. All-metal construction, visible parts high-polished or chrome-plated. Connecting nozzles for the required additional DN 15 KWC shower head with pre-fitted flow regulator 9.0 l/min. Housing made of stainless steel with raised function surface and plastic cover caps. Button sensor including control

electronics with start/stop function and deactivation for cleaning. Connecting hoses with lockable water volume control with backflow preventer and strainer. Activated water hygiene flushing 24 hours after last activation and saving of statistical data. With option for parameterization and communication via the optional bidirectional remote control. Battery operation with 6 V lithium battery (CR-P2) per fitting, separate power supply via plug-in power supply unit 6.75 V/12 V DC or AQUA 3000 open system accessories.

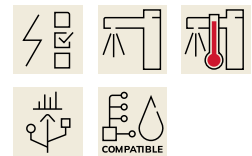
Dimensions of housing 235 x 1160 x 90 mm (W x H x D)

Shower head and battery compartment including battery or plug-in power supply unit with extension cable to be ordered separately.

Technical Data

additional connections	no
with backflow preventer	yes
circulation	no
compatible A3000 open	yes
connection with pay water disp	via electronic module
default automatic hygiene flush	24h after the last activity
default flow time	30 Seconds
with filter	yes
adjustable flow time	yes
functional principle	electronic self-closing
for hand shower	no
hygiene flushing	yes
diameter nominal	DN 15
inlet size	G 1/2 A
Locking mechanism	Top section, non-ceramic
material casing	stainless steel
material code casing	1.4301 Chrome Nickel steel V2A
material fitting	brass-look
maximum flow time	255 Seconds
minimum flow pressure	1.5 bar
minimum flow time	1 Seconds

no
yes
no
yes
via electronic module
24h after the last activity
30 Seconds
yes
yes
electronic self-closing
no
yes
DN 15
G 1/2 A
Top section, non-ceramic
stainless steel
1.4301 Chrome Nickel steel V2A
brass-look
255 Seconds
1.5 bar
1 Seconds



KWC F5E-Therm Stainless steel shower panel

Modell-Linie: F5E | F5ET2020
Showers | Electronic self closing shower

type of mixing	with thermostat
overall depth	90 mm
overall height	1,160 mm
overall width	235 mm
Parameterization	remote control
power supply connection	6,75 / 12 VDC / A3000 open
position of power connection	from top / backside
Type of power supply	Other
with rosettes/cover plate	yes
protective shutdown	yes
shower pipe draining	no
Shower head	for separately shower head
with shower set	no
sound insulation	no
surface finish casing	satin finished
surface finish fitting	chromed
surface treatment fitting	polished
temperature limit	yes
thermal disinfection	yes
with transformer/power supply	no
type of mounting	wall mounting
type of operation	sensor operation
type of sensor	opto-electronic sensor
type of shower	shower panel
volume flow rate at 3 bar	0.15 l/s
water connection	hose (gland nut)
position of water connection	from top / backside
with soap dish	no
Accent colour	chrome-look (glossy)
Basic colour	stainless steel-look

Mandatory Accessories



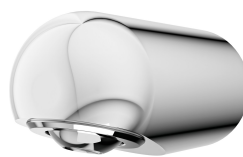
AQUAJET-Slimline shower head for KWC shower panels and systems

2030054255
SHAS0011



AQUAJET-Comfort shower head for KWC shower panels and systems

2030054254
SHAC0011



MÜNCHEN shower head for KWC shower panels and systems

2030054793
SHMU0011

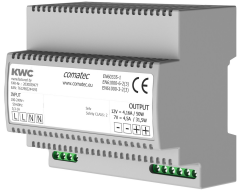


Battery compartment

3600002063
ACEX9023

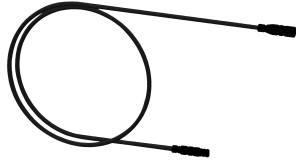
KWC F5E-Therm Stainless steel shower panel

Modell-Linie: F5E | F5ET2020
Showers | Electronic self closing shower



Power supply unit

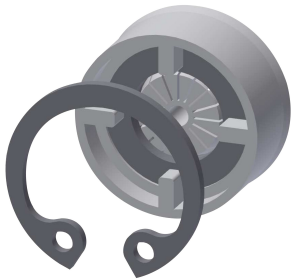
2030039477
ACEX9001



Extension cable 5 m

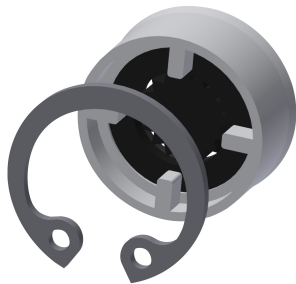
2030043814
ACEX9010

Optional Accessories



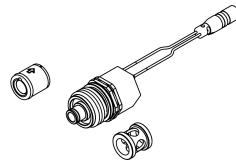
Flow controller 6.0 l/min

2030027586
ESHHE0004



Flow controller 12.0 l/min

2000104783
ESHHE0002



Set for thermal disinfection

2030057940
ACXT2001



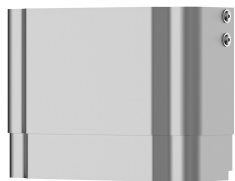
Bidirectional remote control for
electronic fittings F3 and F5

2030036654
ACEX9005



2-button remote control for fittings F3
and F5

2030036849
ACEX9004



Housing extension for F5 shower
panels made of stainless steel

2030057066
ACXX2011



Housing extension for F5 shower
panels made of stainless steel

2030057067
ACXX2012



Housing extension for F5 shower
panels made of stainless steel

2030057068
ACXX2013

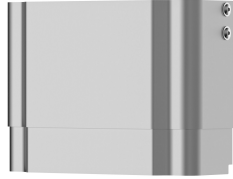
KWC F5E-Therm Stainless steel shower panel

Modell-Linie: F5E | F5ET2020
Showers | Electronic self closing shower



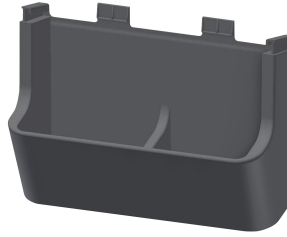
Housing extension for F5 shower panels made of stainless steel

2030057069
ACXX2014



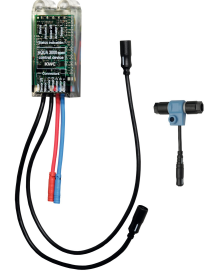
Housing extension for F5 shower panels made of stainless steel

2030057070
ACXX2015



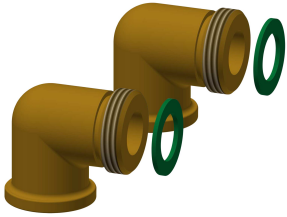
Shower gel dish for F5 shower panels made of stainless steel

2030057077
ACXX2021



Electronic module EM5 for F5 shower taps

2030041918
ACET2001



Connection set for shower panel

2000104916
ZSHOW0006



Connection adapter

2000101441
AQRM928

Spare Parts



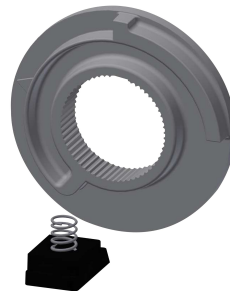
Cover

2030031443
ESHOW0059



Temperature handle

2030047082
ASXT9003



Temperature stop

2030003296
EAQLT0003

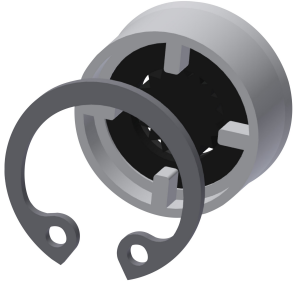


Solenoid valve cartridge

2030003033
EAQFU0001

KWC F5E-Therm Stainless steel shower panel

Modell-Linie: F5E | F5ET2020
Showers | Electronic self closing shower



Flow controller 9,0 l/min

2000104782
ESHHE0001



Stainless steel care set

2000109019
ZWSPL0024



Cleaning product CHROMOL

2000105091
ZWSPL0023