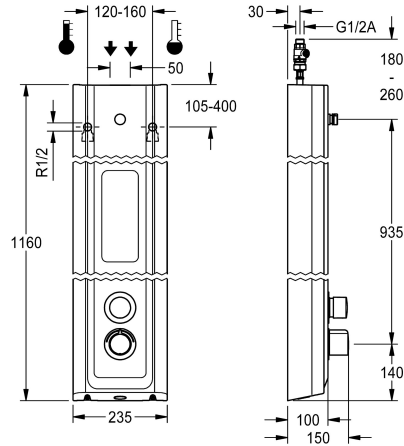


## KWC F5S-Therm Shower panel made of MIRANIT with shower gel shelf

Modell-Linie: F5S | F5ST2026  
Showers | Self closing showers



### KWC-No.

**2030054253**

F5S Therm shower panel made of mineral material for wall mounting with DN 15 self-closing thermostatic mixer and connecting nozzles for the shower head. Hydraulically controlled, for connection to hot water and cold water. Shower valve with integrated FRAMIC self-closing cartridge, thermostat and pre-assembled hygiene unit including sensor with control electronics to perform automatic water hygiene flushing, program-controlled thermal disinfection (additional bypass solenoid-operated flush valve cartridge required) and storage of statistical data. FRAMIC self-closing cartridge, low maintenance and stagnation free, with ceramic disc technology, self-closing, flow pressure independent due to the medium-independent design. Stepless adjustment of flow duration. Thermostat with metal handle, an adjustable and turn-proof temperature stop and an option for manual thermal disinfection. All-metal construction, visible parts high-polished or chrome-plated. Connecting nozzles for the required additional DN

15 KWC shower head with pre-fitted flow regulator 9.0 l/min. Housing with raised function surface and seamless moulded shower gel shelf made of MIRANIT resin-bonded mineral material with pore-free smooth surface (temperature-resistant up to 80 °C), Alpine white colour. Connecting hoses with lockable water volume control with backflow preventer and strainer. Activated water hygiene flushing at fixed intervals of 24 hours. With option for parameterization and communication via the optional bidirectional remote control. Optional hygiene unit for battery operation with 6 V lithium battery (CR-P2) per fitting or separate power supply via plug-in power supply unit 6.75 V/12 V DC.

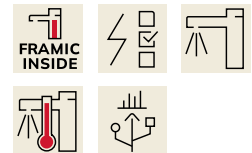
Dimensions of housing 235 x 1160 x 100 mm (W x H x D)

Battery compartment including battery or plug-in power supply unit with extension cable to be ordered separately.

### Technical Data

additional connections	no
with backflow preventer	yes
circulation	no
compatible A3000 open	no
connection with pay water disp	not possible
default automatic hygiene flus	fixed interval 24 hours
with filter	yes
adjustable flow time	yes
functional principle	hydraulic self-closing
for hand shower	no
hygiene flushing	yes
diameter nominal	DN 15
inlet size	G 1/2 A
Locking mechanism	Top section, ceramic
material casing	mineral material
material code casing	Miranit
material fitting	brass-look
maximum flow time	35 Seconds
minimum flow pressure	1.5 bar

no
yes
no
no
not possible
fixed interval 24 hours
yes
yes
hydraulic self-closing
no
yes
DN 15
G 1/2 A
Top section, ceramic
mineral material
Miranit
brass-look
35 Seconds
1.5 bar



## KWC F5S-Therm

Shower panel made of MIRANIT with shower gel shelf

**Modell-Linie: F5S | F5ST2026**

Showers | Self closing showers

minimum flow time	5 Seconds
type of mixing	with thermostat
overall depth	100 mm
overall height	1,160 mm
overall width	235 mm
Parameterization	remote control
power supply connection	6,75 / 12 VDC
position of power connection	from top / backside
Type of power supply	Other
protective system IP	IP59K
with rosettes/cover plate	yes
protective shutdown	no
shower pipe draining	no
Shower head	for separately shower head
with shower set	no
sound insulation	no
surface finish fitting	chromed
surface treatment fitting	polished
temperature limit	yes
thermal disinfection	yes
with transformer/power supply	no
type of mounting	wall mounting
type of operation	manual operation
type of sensor	opto-electronic sensor
type of shower	shower panel
volume flow rate at 3 bar	0.15 l/s
water connection	hose (gland nut)
position of water connection	from top / backside
with soap dish	integrated
Accent colour	chrome-look (glossy)
Basic colour	white

### Mandatory Accessories



**AQUAJET-Slimline shower head for KWC shower panels and systems**

**2030054255**  
SHAS0011



**AQUAJET-Comfort shower head for KWC shower panels and systems**

**2030054254**  
SHAC0011



**MÜNCHEN shower head for KWC shower panels and systems**

**2030054793**  
SHMU0011



**Battery compartment**

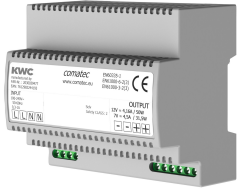
**360002063**  
ACEX9023

## KWC F5S-Therm

Shower panel made of MIRANIT with shower gel shelf

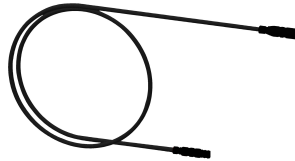
Modell-Linie: F5S | F5ST2026

Showers | Self closing showers



**Power supply unit**

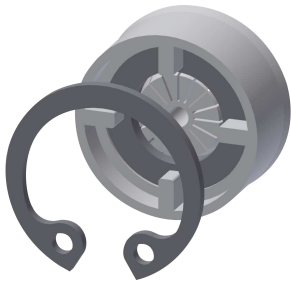
**2030039477**  
ACEX9001



**Extension cable 5 m**

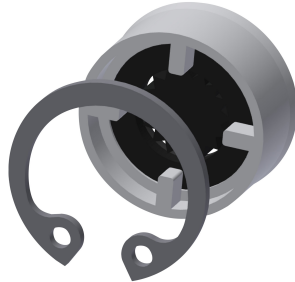
**2030043814**  
ACEX9010

### Optional Accessories



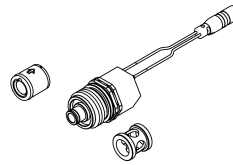
**Flow controller 6.0 l/min**

**2030027586**  
ESHHE0004



**Flow controller 12.0 l/min**

**2000104783**  
ESHHE0002



**Set for thermal disinfection**

**2030057940**  
ACXT2001



**Bidirectional remote control for electronic fittings F3 and F5**

**2030036654**  
ACEX9005



**2-button remote control for fittings F3 and F5**

**2030036849**  
ACEX9004



**Housing extension for F5 shower panels made of MIRANIT**

**2030057071**  
ACXX2016



**Housing extension for F5 shower panels made of MIRANIT**

**2030057072**  
ACXX2017



**Housing extension for F5 shower panels made of MIRANIT**

**2030057073**  
ACXX2018

## KWC F5S-Therm

Shower panel made of MIRANIT with shower gel shelf

Modell-Linie: F5S | F5ST2026

Showers | Self closing showers



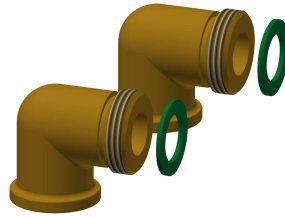
**Housing extension for F5 shower panels made of MIRANIT**

**2030057075**  
ACXX2019



**Housing extension for F5 shower panels made of MIRANIT**

**2030057076**  
ACXX2020



**Connection set for shower panel**

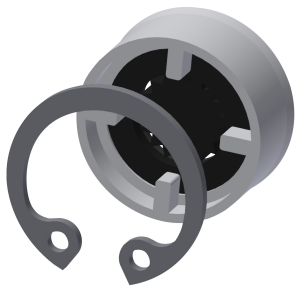
**2000104916**  
ZSHOW0006



**Connection adapter**

**2000101441**  
AQRM928

### Spare Parts



**Flow controller 9,0 l/min**

**2000104782**  
ESHHE0001



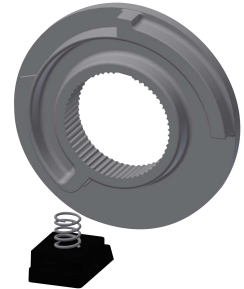
**Cover**

**2030031443**  
ESHOW0059



**Temperature handle**

**2030047082**  
ASXT9003



**Temperature stop**

**2030003296**  
EAQLT0003



**Plug chromed**

**2030053006**  
ASSX9004



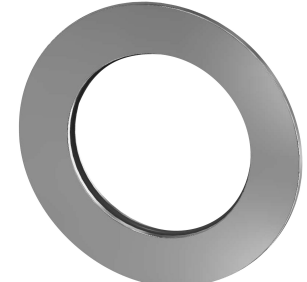
**Push cap**

**2030049943**  
ASST2001



**Safety ring**

**2030048357**  
ASSX9003



**Rosette**

**2030048765**  
ASET2006

## KWC F5S-Therm

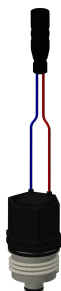
Shower panel made of MIRANIT with shower gel shelf

Modell-Linie: F5S | F5ST2026  
Showers | Self closing showers



**FRAMIC Self-closing cartridge**

**2030046145**  
ASSX9001



**Solenoid valve cartridge**

**2030003033**  
EAQFU0001