

KWC-No.

2030054793

MÜNCHEN shower head for F5 shower panels

MÜNCHEN shower head with continuously adjustable shower jet between 9° - 21°, for installation on KWC shower panels and shower

systems with pre-mounted connecting nozzles DN 15, diameter 26 mm, polished chromium-plated brass housing.

Technical Data

diameter nominal

DN 15

adjustable tilt angle

yes

type

shower head

type of connection

Shower panel

type of shower head

jet shower head

Spare Parts



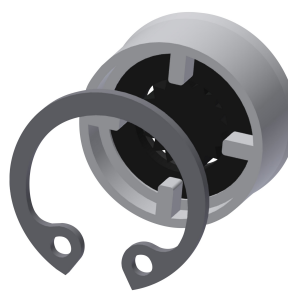
Retaining ring

2000104851
ESHMU0005



Sphere

2000104839
ESHMU0001



Flow controller 9,0 l/min

2000104782
ESHHE0001



Retaining ring

2000102690
ZAQUA093