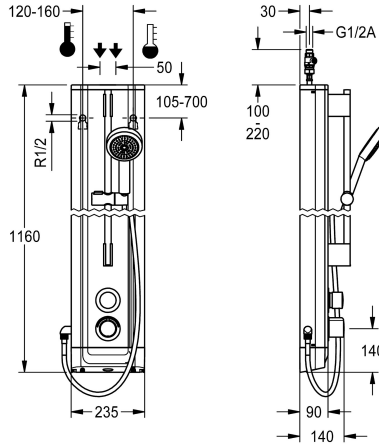


KWC F5S-Therm Stainless steel shower panel with hand shower fitting

Modell-Linie: F5S | F5ST2021
Showers | Self closing showers



KWC-No.

2030056539

F5S Therm shower panel made of stainless steel for wall mounting with DN 15 self-closing thermostatic mixer and connecting nozzles for a hand shower fitting. Hydraulically controlled, for connection to hot water and cold water. Shower valve with integrated FRAMIC self-closing cartridge, thermostat and pre-assembled hygiene unit including sensor with control electronics to perform automatic water hygiene flushing, with program-controlled thermal disinfection (additional bypass solenoid-operated flush valve cartridge required) and storage of statistical data. FRAMIC self-closing cartridge, low maintenance and stagnation free, with ceramic disc technology, self-closing, flow pressure independent due to the medium-independent design. Stepless adjustment of flow duration. Thermostat with metal handle, an adjustable and turn-proof temperature stop and an option for manual thermal disinfection. All-metal construction, visible parts high-polished or chrome-plated. Pre-fitted chrome-plated brass shower pole with height-adjustable

hand shower holder and chrome-plated plastic hand shower, shower head with rain jet, diameter 110 mm, shower hose 900 mm. Housing made of stainless steel with raised function surface and plastic cover caps. Connecting hoses with lockable water volume control with backflow preventer and strainer. Activated water hygiene flushing at fixed intervals of 24 hours. With option for parameterization and communication via the optional bidirectional remote control. Optional hygiene unit for battery operation with 6 V lithium battery (CR-P2) per fitting or separate power supply via plug-in power supply unit 6.75 V/12 V DC.

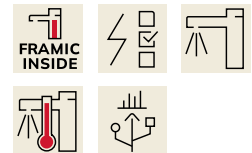
Dimensions of housing 235 x 1160 x 90 mm (W x H x D)

Battery compartment including battery or plug-in power supply unit with extension cable to be ordered separately.

Technical Data

| |
|--------------------------------|
| additional connections |
| with backflow preventer |
| circulation |
| compatible A3000 open |
| connection with pay water disp |
| default automatic hygiene flus |
| with filter |
| adjustable flow time |
| functional principle |
| for hand shower |
| hygiene flushing |
| diameter nominal |
| inlet size |
| Locking mechanism |
| material casing |
| material code casing |
| material fitting |
| maximum flow time |
| minimum flow pressure |

| |
|--------------------------------|
| no |
| yes |
| no |
| no |
| not possible |
| fixed interval 24 hours |
| yes |
| yes |
| hydraulic self-closing |
| yes |
| yes |
| DN 15 |
| G 1/2 A |
| Top section, ceramic |
| stainless steel |
| 1.4301 Chrome Nickel steel V2A |
| brass-look |
| 35 Seconds |
| 1 bar |



KWC F5S-Therm

Stainless steel shower panel with hand shower fitting

Modell-Linie: F5S | F5ST2021

Showers | Self closing showers

| | |
|-------------------------------|------------------------|
| minimum flow time | 5 Seconds |
| type of mixing | with thermostat |
| overall depth | 90 mm |
| overall height | 1,160 mm |
| overall width | 235 mm |
| Parameterization | remote control |
| power supply connection | 6,75 / 12 VDC |
| position of power connection | from top / backside |
| Type of power supply | Other |
| protective system IP | IP59K |
| with rosettes/cover plate | yes |
| protective shutdown | no |
| shower pipe draining | no |
| with shower set | yes |
| sound insulation | no |
| surface finish casing | satin finished |
| surface finish fitting | chromed |
| surface treatment fitting | polished |
| temperature limit | yes |
| thermal disinfection | yes |
| with transformer/power supply | no |
| type of mounting | wall mounting |
| type of operation | manual operation |
| type of sensor | opto-electronic sensor |
| type of shower | shower panel |
| water connection | hose (gland nut) |
| position of water connection | from top / backside |
| with soap dish | no |
| Accent colour | chrome-look (glossy) |
| Basic colour | stainless steel-look |

Mandatory Accessories



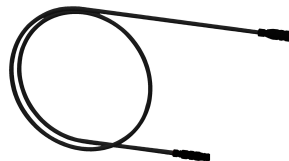
Battery compartment

3600002063
ACEX9023



Power supply unit

2030039477
ACEX9001



Extension cable 5 m

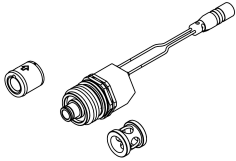
2030043814
ACEX9010

KWC F5S-Therm

Stainless steel shower panel with hand shower fitting

Modell-Linie: F5S | F5ST2021
Showers | Self closing showers

Optional Accessories



Set for thermal disinfection

2030057940
ACXT2001



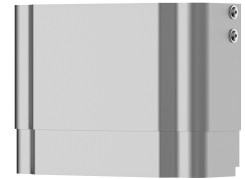
Bidirectional remote control for electronical fittings F3 and F5

2030036654
ACEX9005



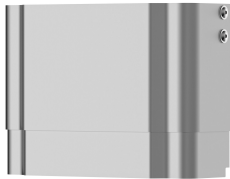
2-button remote control for fittings F3 and F5

2030036849
ACEX9004



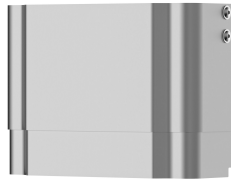
Housing extension for F5 shower panels made of stainless steel

2030057066
ACXX2011



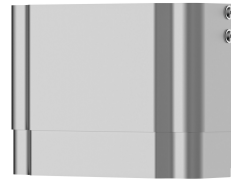
Housing extension for F5 shower panels made of stainless steel

2030057067
ACXX2012



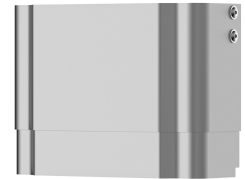
Housing extension for F5 shower panels made of stainless steel

2030057068
ACXX2013



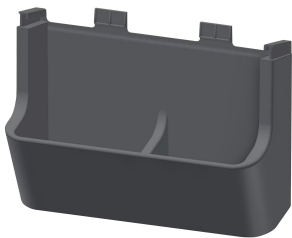
Housing extension for F5 shower panels made of stainless steel

2030057069
ACXX2014



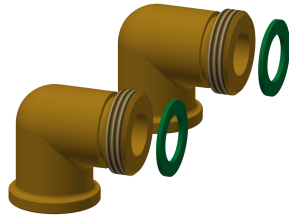
Housing extension for F5 shower panels made of stainless steel

2030057070
ACXX2015



Shower gel dish for F5 shower panels made of stainless steel

2030057077
ACXX2021



Connection set for shower panel

2000104916
ZSHOW0006



Connection adapter

2000101441
AQRM928

Spare Parts

KWC F5S-Therm

Stainless steel shower panel with hand shower fitting

Modell-Linie: F5S | F5ST2021
Showers | Self closing showers



Hand shower

2030051216
ACXX2007



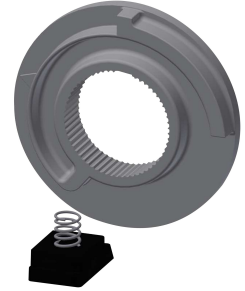
Cover

2030031443
ESHOW0059



Temperature handle

2030047082
ASXT9003



Temperature stop

2030003296
EAQLT0003



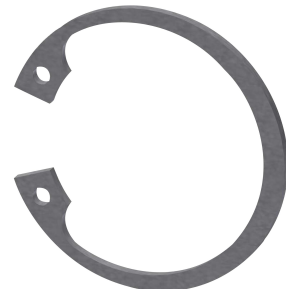
Plug chromed

2030053006
ASSX9004



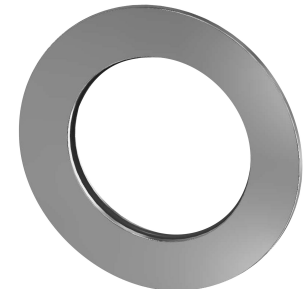
Push cap

2030049943
ASST2001



Safety ring

2030048357
ASSX9003



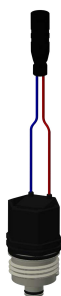
Rosette

2030048765
ASET2006



FRAMIC Self-closing cartridge

2030046145
ASSX9001



Solenoid valve cartridge

2030003033
EAQFU0001



Stainless steel care set

2000109019
ZWSPL0024



Cleaning product CHROMOL

2000105091
ZWSPL0023