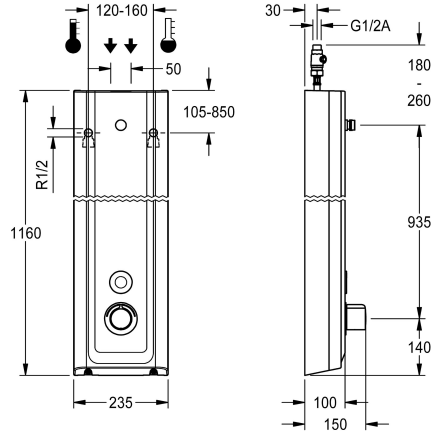


## KWC F5E-Therm Shower panel made of MIRANIT

Modell-Linie: F5E | F5ET2024  
Showers | Electronic self closing shower



### KWC-No.

2030056563

F5E Therm shower panel made of mineral material for wall mounting with thermostatic mixer and connecting nozzles for the shower head. Electrically controlled, for connection to hot water and cold water. Shower valve with integrated solenoid valve cartridge, thermostat and mechanism for optional bypass solenoid valve cartridge to perform program-controlled thermal disinfection. Thermostat with metal handle, an adjustable and turn-proof temperature stop and an option for manual thermal disinfection. All-metal construction, visible parts high-polished or chrome-plated. Connecting nozzles for the required additional DN 15 KWC shower head with pre-fitted flow regulator 9.0 l/min. Housing with raised function surface made of MIRANIT resin-bonded mineral material with pore-free smooth surface (temperature-resistant up to 80 °C), Alpine white colour. Button

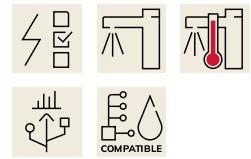
sensor including control electronics with start/stop function and deactivation for cleaning. Connecting hoses with lockable water volume control with backflow preventer and strainer. Activated water hygiene flushing 24 hours after last activation and saving of statistical data. With option for parameterization and communication via the optional bidirectional remote control. Battery operation with 6 V lithium battery (CR-P2) per fitting, separate power supply via plug-in power supply unit 6.75 V/12 V DC or AQUA 3000 open system accessories.

Dimensions of housing 235 x 1160 x 100 mm (W x H x D)

Shower head and battery compartment including battery or plug-in power supply unit with extension cable to be ordered separately.

### Technical Data

additional connections	no
with backflow preventer	yes
circulation	no
compatible A3000 open	yes
connection with pay water disp	via electronic module
default automatic hygiene flus	24h after the last activity
default flow time	30 Seconds
with filter	yes
adjustable flow time	yes
functional principle	electronic self-closing
for hand shower	no
hygiene flushing	yes
diameter nominal	DN 15
inlet size	G 1/2 A
Locking mechanism	Top section, non-ceramic
material casing	mineral material
material code casing	Miranit
material fitting	brass-look
maximum flow time	255 Seconds
minimum flow pressure	1.5 bar



## KWC F5E-Therm Shower panel made of MIRANIT

Modell-Linie: **F5E | F5ET2024**  
Showers | Electronic self closing shower

minimum flow time	1 Seconds
type of mixing	with thermostat
overall depth	100 mm
overall height	1,160 mm
overall width	235 mm
Parameterization	remote control
power supply connection	6,75 / 12 VDC / A3000 open
position of power connection	from top / backside
Type of power supply	Other
with rosettes/cover plate	yes
protective shutdown	yes
shower pipe draining	no
Shower head	for separately shower head
with shower set	no
sound insulation	no
surface finish fitting	chromed
surface treatment fitting	polished
temperature limit	yes
thermal disinfection	yes
with transformer/power supply	no
type of mounting	wall mounting
type of operation	sensor operation
type of sensor	opto-electronic sensor
type of shower	shower panel
volume flow rate at 3 bar	0.15 l/s
water connection	hose (gland nut)
position of water connection	from top / backside
with soap dish	no
Accent colour	chrome-look (glossy)
Basic colour	white

### Mandatory Accessories



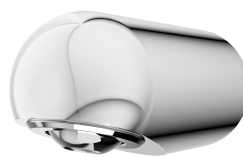
**AQUAJET-Slimline shower head for KWC shower panels and systems**

**2030054255**  
SHAS0011



**AQUAJET-Comfort shower head for KWC shower panels and systems**

**2030054254**  
SHAC0011



**MÜNCHEN shower head for KWC shower panels and systems**

**2030054793**  
SHMU0011

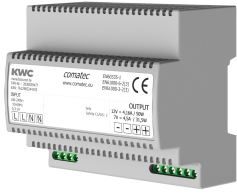


**Battery compartment**

**3600002063**  
ACEX9023

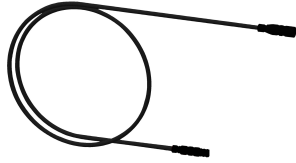
## KWC F5E-Therm Shower panel made of MIRANIT

Modell-Linie: F5E | F5ET2024  
Showers | Electronic self closing shower



Power supply unit

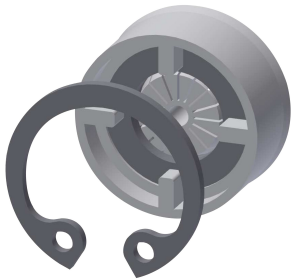
**2030039477**  
ACEX9001



Extension cable 5 m

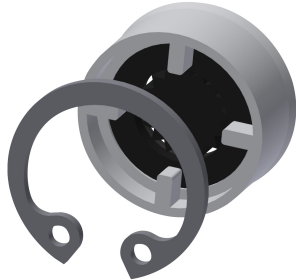
**2030043814**  
ACEX9010

### Optional Accessories



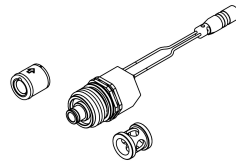
Flow controller 6.0 l/min

**2030027586**  
ESHHE0004



Flow controller 12.0 l/min

**2000104783**  
ESHHE0002



Set for thermal disinfection

**2030057940**  
ACXT2001



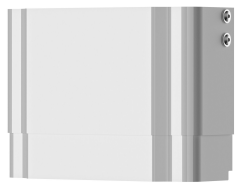
Bidirectional remote control for  
electronic fittings F3 and F5

**2030036654**  
ACEX9005



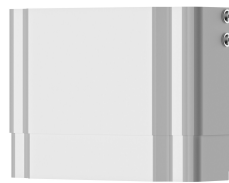
2-button remote control for fittings F3  
and F5

**2030036849**  
ACEX9004



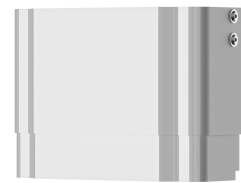
Housing extension for F5 shower  
panels made of MIRANIT

**2030057071**  
ACXX2016



Housing extension for F5 shower  
panels made of MIRANIT

**2030057072**  
ACXX2017



Housing extension for F5 shower  
panels made of MIRANIT

**2030057073**  
ACXX2018

## KWC F5E-Therm Shower panel made of MIRANIT

Modell-Linie: F5E | F5ET2024  
Showers | Electronic self closing shower



Housing extension for F5 shower panels made of MIRANIT

**2030057075**  
ACXX2019



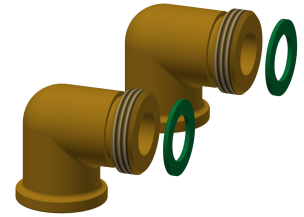
Housing extension for F5 shower panels made of MIRANIT

**2030057076**  
ACXX2020



Electronic module EM5 for F5 shower taps

**2030041918**  
ACET2001



Connection set for shower panel

**2000104916**  
ZSHOW0006



Connection adapter

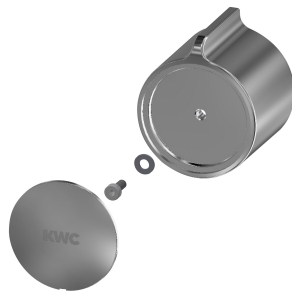
**2000101441**  
AQRM928

### Spare Parts



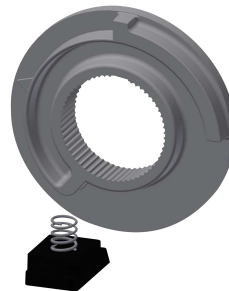
Cover

**2030031443**  
ESHOW0059



Temperature handle

**2030047082**  
ASXT9003



Temperature stop

**2030003296**  
EAQLT0003

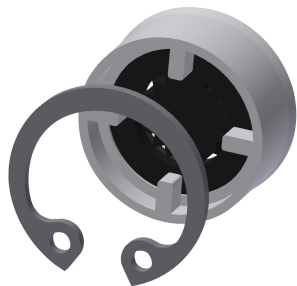


Solenoid valve cartridge

**2030003033**  
EAQFU0001

## KWC F5E-Therm Shower panel made of MIRANIT

Modell-Linie: F5E | F5ET2024  
Showers | Electronic self closing shower



**Flow controller 9,0 l/min**

---

**2000104782**  
ESHHE0001

---