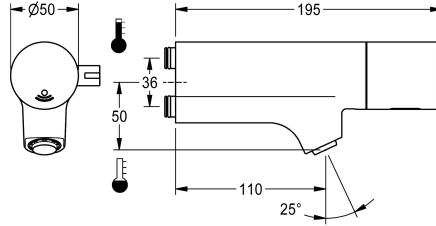


## KWC F5E-Mix

Electronic washbasin mixer for fitting unit or wall flange

Modell-Linie: F5E | F5EM1015

Taps | Electronic taps



### KWC-No.

**2030058995**

F5E-Mix Electronic washbasin mixer

F5E-Mix Washbasin mixer DN 15 with angled outlet for installation on fitting units or separate wall flanges, for sanitary facilities. Opto-electronic control, activation on hand reflection. For connection to hot and cold water. Control electronics, solenoid valve cartridge, 6 V lithium battery (CR-P2) and sensor in all-metal housing, high-polished chrome-plated brass. Temperature lever with adjustable, turn-proof temperature stop. Anti-theft aerator, SLIM design, with

integrated flow regulator 5.0 l/min. Connections positioned above one another with backflow preventers. Activated water hygiene flushing 24 hours after last activation, safety switch-off for continuous reflexion and saving of statistical data. With option for parameterization and communication via optional, bidirectional remote control.

### Technical Data

with backflow preventer	yes
compatible A3000 open	no
default automatic hygiene flush	24h after the last activity
depressurised	no
with filter	yes
adjustable flow time	yes
functional principle	electronic self-closing
hygiene flushing	yes
diameter nominal	DN 15
Locking mechanism	Top section, non-ceramic
material fitting	brass-lock
minimum flow pressure	1 bar
type of mixing	yes
number of batteries	1
Parameterization	remote control
Pop-up waste set	no
power supply connection	Battery 6 V
Type of power supply	Battery
with rosettes/cover plate	no
protective shutdown	yes
sound insulation	no
Spout	fixed
spout projection	110 mm
surface finish fitting	chromed



## KWC F5E-Mix

Electronic washbasin mixer for fitting unit or wall flange

**Modell-Linie: F5E | F5EM1015**

Taps | Electronic taps

surface treatment fitting	polished
temperature limit	yes
thermal disinfection	automatic thermal disinfection
with transformer/power supply	no
type of batteries	CR-P2 Lithium battery 6V
type of mounting	mounted on product
type of operation	sensor operation
type of sensor	opto-electronic sensor
type of tap	for fitting unit
volume flow rate at 3 bar	0.08 l/s
water connection	plug connection
Accent colour	none
Basic colour	chrome-look (glossy)

### Mandatory Accessories



#### Wall flange

**2030058762**  
ACXM1002



#### Single clamping bridge

**2030058826**  
ACXM1003



#### Double clamping bridge

**2030059971**  
ACXM1004

### Optional Accessories



#### Bidirectional remote control for electronic fittings F3 and F5

**2030036654**  
ACEX9005



#### 2-button remote control for fittings F3 and F5

**2030036849**  
ACEX9004



#### 5.0 l/min aerator, angle-adjustable

**2030041326**  
ACXX1002



#### 3.0 l/min. aerator

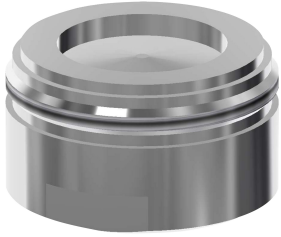
**2030041424**  
ASXX1008

## KWC F5E-Mix

Electronic washbasin mixer for fitting unit or wall flange

Modell-Linie: F5E | F5EM1015

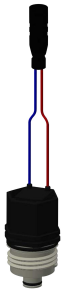
Taps | Electronic taps



### Aerator 1.8 l/min

**2030041442**  
ACXX1005

### Spare Parts



### Solenoid valve cartridge

**2030045522**  
ACXX9002



### Lithium battery 6 V

**2000104846**  
EPRTR0008



### F5 Foil

**2030053034**  
ASET2010



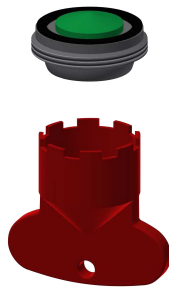
### Battery compartment

**3600002063**  
ACEX9023



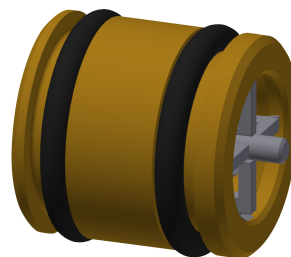
### Mounting key

**2030041329**  
ACXX1003



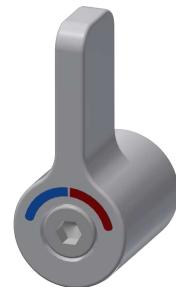
### Aerator 5.0 l/min

**2030041011**  
ASXX1004



### Guide bushing

**2030023924**  
ETAPS0040



### Temperature selection lever

**2030041431**  
ASEM1001

## KWC F5E-Mix

Electronic washbasin mixer for fitting unit or wall flange

**Modell-Linie: F5E | F5EM1015**

Taps | Electronic taps



### Hexagonal socket wrench

---

**2030047722**

ACEX9011

---