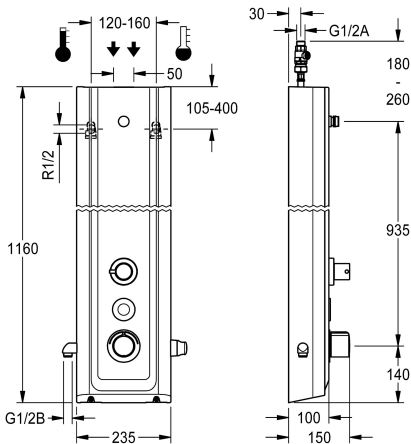


KWC F5E-Therm
Shower panel made of MIRANIT with diverter between overhead shower and hand shower

Modell-Linie: F5E | F5ET2050
Showers | Electronic self closing shower



KWC-No.

2030062975

NEW

F5E-Therm shower panel made of mineral material for wall mounting with thermostatic mixer and diverter between overhead shower and hand shower. Electrically controlled, connects to hot water and cold water. Function block with integrated solenoid valve cartridge, thermostat and mechanism for optional bypass solenoid valve cartridge to perform program-controlled thermal disinfection. Thermostat with metal handle with adjustable and turn-proof temperature stop and option for manual thermal disinfection. All-metal construction, visible parts polished chrome-plated. Connecting nozzles for separately required DN 15 KWC shower head with pre-fitted flow regulator 9.0 l/min. Housing with raised function surface made of MIRANIT resin-bonded mineral material with pore-free smooth surface (temperature-resistant up to 80 °C), Alpine white colour. Hand shower connection on the left and chrome-plated plastic hand shower holder on the right, both pre-assembled

on the side. Button sensor including control electronics with start/stop function and deactivation of cleaning. Connector hoses with lockable water flow control with backflow preventer and strainer. Activated water hygiene flushing 24 hours after last activation and saving of statistical data. With option for parameterization and communication via optional, bidirectional remote control. Optionally for battery operation with 6 V lithium battery (CR-P2) per fitting or separate power supply via 6.75 V/12 V DC power supply unit or AQUA 3000 open system accessories.

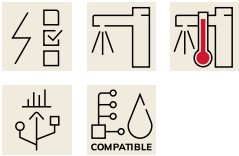
Housing dimensions 235 x 1160 x 100 mm (W x H x D)

Shower head, hand shower with shower hose and battery compartment including battery or power supply unit with extension cable must be ordered separately.

Technical Data

additional connections
with backflow preventer
circulation
compatible A3000 open
connection with pay water disp
default automatic hygiene flus
default flow time
with filter
adjustable flow time
functional principle
for hand shower
hygiene flushing
diameter nominal
inlet size
Locking mechanism
material casing
material code casing
material fitting
maximum flow time
minimum flow pressure

for handshower with switch
yes
no
yes
via electronic module
24h after the last activity
30 Seconds
yes
yes
electronic self-closing
yes
yes
DN 15
G 1/2 A
Top section, non-ceramic
mineral material
Miranit
brass-look
255 Seconds
1.5 bar





KWC F5E-Therm
Shower panel made of MIRANIT with diverter between overhead shower and hand shower

Modell-Linie: F5E | F5ET2050
Showers | Electronic self closing shower

minimum flow time	1 Seconds
type of mixing	with thermostat
overall depth	100 mm
overall height	1,160 mm
overall width	235 mm
Parameterization	remote control
power supply connection	6,75 / 12 V DC / A3000 open
position of power connection	from top / backside
Type of power supply	other
with rosettes/cover plate	yes
protective shutdown	yes
shower pipe draining	no
Shower head	for separately shower head
with shower set	no
sound insulation	no
surface finish fitting	chromed
surface treatment fitting	polished
temperature limit	yes
thermal disinfection	yes
with transformer/power supply	no
type of mounting	wall mounting
type of operation	sensor operation
type of sensor	opto-electronic sensor
type of shower	shower panel
volume flow rate at 3 bar	0.15 l/s
water connection	hose (gland nut)
position of water connection	from top / backside
with soap dish	no
Accent colour	chrome-look (glossy)
Basic colour	white

Mandatory Accessories



AQUAJET-Comfort shower head for KWC shower panels and systems
2030054254
SHAC0011



AQUAJET-Slimline shower head for KWC shower panels and systems
2030054255
SHAS0011



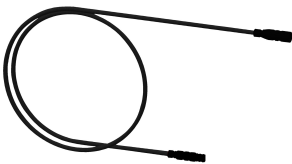
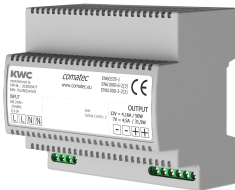
MÜNCHEN shower head for KWC shower panels and systems
2030054793
SHMU0011



Battery compartment
3600002063
ACEX9023

KWC F5E-Therm
Shower panel made of MIRANIT with diverter between overhead shower and hand shower

Modell-Linie: F5E | F5ET2050
Showers | Electronic self closing shower



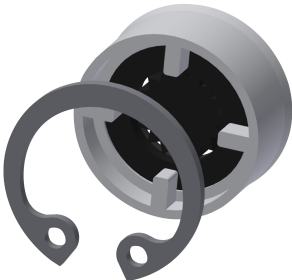
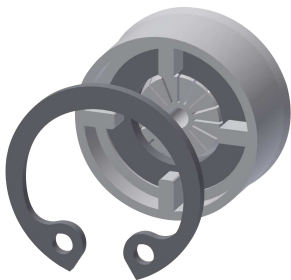
Power supply unit

2030039477
ACEX9001

Extension cable 5 m

2030043814
ACEX9010

Optional Accessories



Flow controller 6.0 l/min

2030027586
ESHHE0004

Flow controller 12.0 l/min

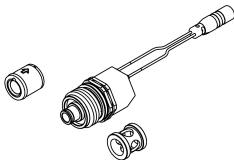
2000104783
ESHHE0002

Hand shower

2030051216
ACXX2007

Shower bracket

2030051217
ACXX2008



Set for thermal disinfection

2030057940
ACXT2001

Bidirectional remote control for electronic fittings F3 and F5

2030036654
ACEX9005

2-button remote control for fittings F3 and F5

2030036849
ACEX9004

Housing extension for F5 shower panels made of MIRANIT

2030057071
ACXX2016

KWC F5E-Therm
Shower panel made of MIRANIT with diverter between overhead shower and hand shower

Modell-Linie: F5E | F5ET2050
Showers | Electronic self closing shower



Housing extension for F5 shower panels made of MIRANIT

2030057072
ACXX2017



Housing extension for F5 shower panels made of MIRANIT

2030057073
ACXX2018



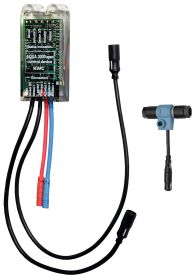
Housing extension for F5 shower panels made of MIRANIT

2030057075
ACXX2019



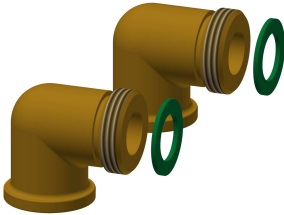
Housing extension for F5 shower panels made of MIRANIT

2030057076
ACXX2020



Electronic module EM5 for F5 shower taps

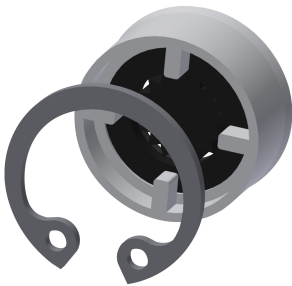
2030041918
ACET2001



Connection set for shower panel

2000104916
ZSHOW0006

Spare Parts



Flow controller 9,0 l/min

2000104782
ESHHE0001



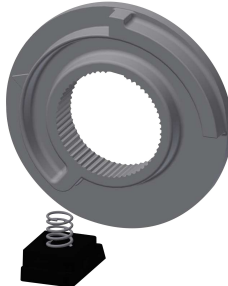
Cover

2030031443
ESHOW0059



Temperature handle

2030047082
ASXT9003



Temperature stop

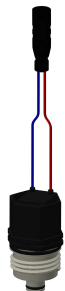
2030003296
EAQLT0003

KWC F5E-Therm

Shower panel made of MIRANIT with diverter between overhead shower and hand shower

Modell-Linie: F5E | F5ET2050

Showers | Electronic self closing shower



Solenoid valve cartridge

2030003033

EAQFU0001
