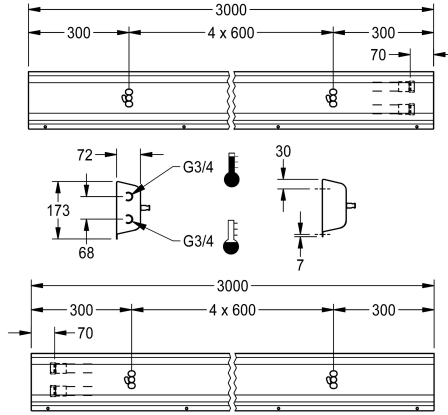
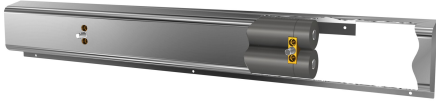


KWC Fitting unit for wall mounting

Modell-Linie: FITTING-UNITS | AQFU0219
Taps | Fitting units



KWC-No.

2030064892
with 2 wash places, housing width 1200 mm

2030064895
with 3 wash places, housing width 1800 mm

2030064897
with 4 wash places, housing width 2400 mm

2030064898
with 5 wash places, housing width 3000 mm

2030064899
with 6 wash places, housing width 3600 mm

overall width

1,200 mm

1,800 mm

2,400 mm

3,000 mm

3,600 mm

Fitting unit ready for connection with 5 wash places, for wall mounting, for connection to hot and cold water from right or left at rear. Housing made of stainless steel, satin finished with pre-assembled fitting connection blocks and connection options for power supply to electronic fittings, stainless steel piping, hanging

rail and mounting materials.

Dimensions of housing 3000 x 173 x 72 mm (W x H x D)
Wash place width 600 mm

Technical Data

circulation	no
fitting	for separately shower head
hygiene flushing	no
type of mixing	yes
overall depth	72 mm
overall height	173 mm
overall width	3,000 mm
type of mounting	wall mounting
wash place width	600 mm
number of wash places	5
position of water connection	from backside

circulation	no
fitting	for separately shower head
hygiene flushing	no
type of mixing	yes
overall depth	72 mm
overall height	173 mm
overall width	3,000 mm
type of mounting	wall mounting
wash place width	600 mm
number of wash places	5
position of water connection	from backside

Mandatory Accessories

KWC

Fitting unit for wall mounting

Modell-Linie: FITTING-UNITS | AQFU0219

Taps | Fitting units



F5S-Mix self-closing single-mixer for fitting unit or wall flange

2030058991
F5SM1011



F5L-Therm single-lever thermostatic mixer for tap unit or wall flange

2030065268
F5LT1033



F5E-Mix electronic washbasin mixer for fitting unit or wall flange

2030058995
F5EM1015

Spare Parts



Stainless steel care set

2000109019
ZWSPL0024



Cleaning product CHROMOL

2000105091
ZWSPL0023