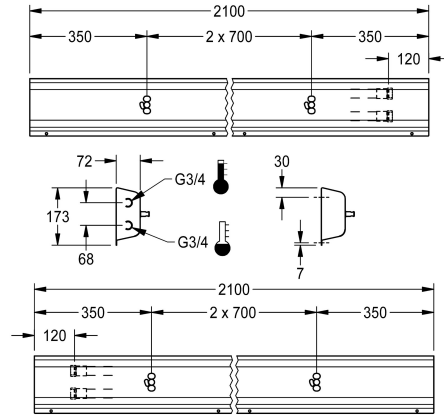
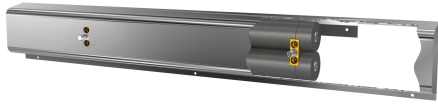


KWC

Fitting unit for wall mounting

Modell-Linie: FITTING-UNITS | AQFU0222

Taps | Fitting units



KWC-No.

2030064904

with 3 wash places, housing width 2100 mm

2030064903

with 3 wash places, housing width 2100 mm

2030064907

with 4 wash places, housing width 2800 mm

2030064912

with 5 wash places, housing width 3500 mm

2030064917

with 6 wash places, housing width 4200 mm

overall width

1,400 mm

2,100 mm

2,800 mm

3,500 mm

4,200 mm

Fitting unit ready for connection with 3 wash places, for wall mounting, for connection to hot and cold water from right or left at rear. Housing made of stainless steel, satin finished with pre-assembled fitting connection blocks and connection options for power supply to electronic fittings, stainless steel piping, hanging

rail and mounting materials.

Dimensions of housing 2100 x 173 x 72 mm (W x H x D)
Wash place width 700 mm

Technical Data

circulation

no

fitting

for separately shower head

hygiene flushing

no

type of mixing

yes

overall depth

72 mm

overall height

173 mm

overall width

2,100 mm

type of mounting

wall mounting

wash place width

700 mm

number of wash places

3

position of water connection

from backside

Mandatory Accessories

KWC

Fitting unit for wall mounting

Modell-Linie: FITTING-UNITS | AQFU0222

Taps | Fitting units



F5S-Mix self-closing single-mixer for fitting unit or wall flange

2030058991
F5SM1011



F5L-Therm single-lever thermostatic mixer for tap unit or wall flange

2030065268
F5LT1033



F5E-Mix electronic washbasin mixer for fitting unit or wall flange

2030058995
F5EM1015

Spare Parts



Stainless steel care set

2000109019
ZWSPL0024



Cleaning product CHROMOL

2000105091
ZWSPL0023