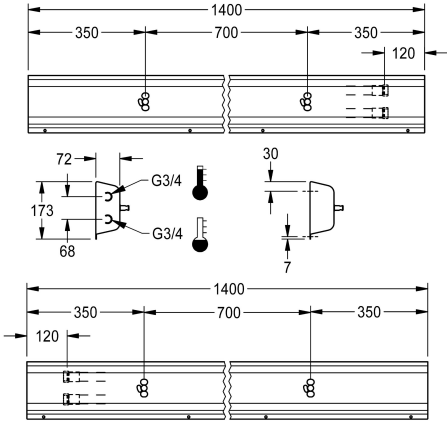
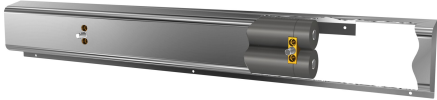


KWC
Fitting unit for wall mounting

Modell-Linie: FITTING-UNITS | AQFU0221
Taps | Fitting units



KWC-No.
2030064904
with 3 wash places, housing width 2100 mm
2030064903
with 3 wash places, housing width 2100 mm
2030064907
with 4 wash places, housing width 2800 mm
2030064912
with 5 wash places, housing width 3500 mm
2030064917
with 6 wash places, housing width 4200 mm

overall width
1,400 mm
2,100 mm
2,800 mm
3,500 mm
4,200 mm

Fitting unit ready for connection with 2 wash places, for wall mounting, for connection to hot and cold water from right or left at rear. Housing made of stainless steel, satin finished with pre-assembled fitting connection blocks and connection options for power supply to electronic fittings, stainless steel piping, hanging

rail and mounting materials.
Dimensions of housing 1400 x 173 x 72 mm (W x H x D)
Wash place width 700 mm

Technical Data
circulation
fitting
hygiene flushing
type of mixing
overall depth
overall height
overall width
type of mounting
wash place width
number of wash places
position of water connection

no
for separately shower head
no
yes
72 mm
173 mm
1,400 mm
wall mounting
700 mm
2
from backside

Mandatory Accessories



KWC
Fitting unit for wall mounting

Modell-Linie: FITTING-UNITS | AQFU0221
Taps | Fitting units



F5S-Mix self-closing single-mixer for fitting unit or wall flange

2030058991
F5SM1011



F5L-Therm single-lever thermostatic mixer for tap unit or wall flange

2030065268
F5LT1033



F5E-Mix electronic washbasin mixer for fitting unit or wall flange

2030058995
F5EM1015

Spare Parts



Stainless steel care set

2000109019
ZWSPL0024



Cleaning product CHROMOL

2000105091
ZWSPL0023