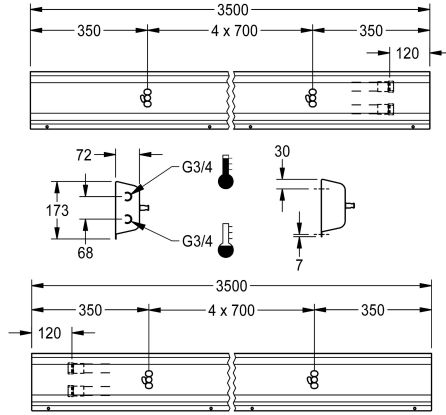
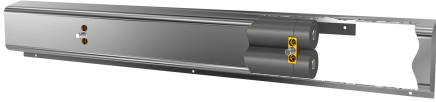


## KWC Fitting unit for wall mounting

Modell-Linie: FITTING-UNITS | AQFU0224  
Taps | Fitting units



### KWC-No.

**2030064904**  
with 3 wash places, housing width 2100 mm

**2030064903**  
with 3 wash places, housing width 2100 mm

**2030064907**  
with 4 wash places, housing width 2800 mm

**2030064912**  
with 5 wash places, housing width 3500 mm

**2030064917**  
with 6 wash places, housing width 4200 mm

### overall width

1,400 mm

2,100 mm

2,800 mm

3,500 mm

4,200 mm

Fitting unit ready for connection with 5 wash places, for wall mounting, for connection to hot and cold water from right or left at rear. Housing made of stainless steel, satin finished with pre-assembled fitting connection blocks and connection options for power supply to electronic fittings, stainless steel piping, hanging

rail and mounting materials.

Dimensions of housing 3500 x 173 x 72 mm (W x H x D)  
Wash place width 700 mm

### Technical Data

circulation	no
fitting	for separately shower head
hygiene flushing	no
type of mixing	yes
overall depth	72 mm
overall height	173 mm
overall width	3,500 mm
type of mounting	wall mounting
wash place width	700 mm
number of wash places	5
position of water connection	from backside

circulation	no
fitting	for separately shower head
hygiene flushing	no
type of mixing	yes
overall depth	72 mm
overall height	173 mm
overall width	3,500 mm
type of mounting	wall mounting
wash place width	700 mm
number of wash places	5
position of water connection	from backside

### Mandatory Accessories

## KWC

Fitting unit for wall mounting

Modell-Linie: FITTING-UNITS | AQFU0224

Taps | Fitting units



**F5S-Mix self-closing single-mixer for fitting unit or wall flange**

**2030058991**  
F5SM1011



**F5L-Therm single-lever thermostatic mixer for tap unit or wall flange**

**2030065268**  
F5LT1033



**F5E-Mix electronic washbasin mixer for fitting unit or wall flange**

**2030058995**  
F5EM1015

## Spare Parts



**Stainless steel care set**

**2000109019**  
ZWSPL0024



**Cleaning product CHROMOL**

**2000105091**  
ZWSPL0023