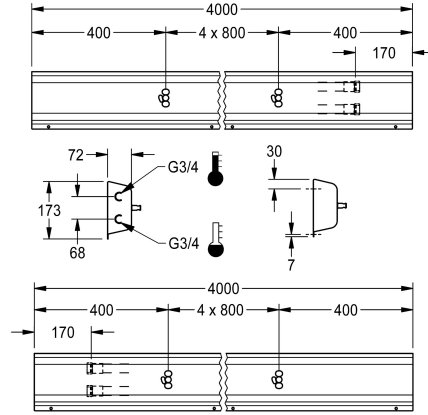
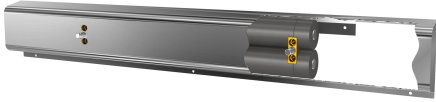


## KWC Fitting unit for wall mounting

Modell-Linie: FITTING-UNITS | AQFU0229  
Taps | Fitting units



### KWC-No.

**2030064918**  
with 2 wash places, housing width 1600 mm

**2030064919**  
with 3 wash places, housing width 2400 mm

**2030064920**  
with 4 wash places, housing width 3200 mm

**2030064921**  
with 5 wash places, housing width 4000 mm

### overall width

1,600 mm

2,400 mm

3,200 mm

4,000 mm

Fitting unit ready for connection with 5 wash places, for wall mounting, for connection to hot and cold water from right or left at rear. Housing made of stainless steel, satin finished with pre-assembled fitting connection blocks and connection options for power supply to electronic fittings, stainless steel piping, hanging

rail and mounting materials.

Dimensions of housing 4000 x 173 x 72 mm (W x H x D)  
Wash place width 800 mm

### Technical Data

circulation	no
fitting	for separately shower head
hygiene flushing	no
type of mixing	yes
overall depth	72 mm
overall height	173 mm
overall width	4,000 mm
type of mounting	wall mounting
wash place width	800 mm
number of wash places	5
position of water connection	from backside

no
for separately shower head
no
yes
72 mm
173 mm
4,000 mm
wall mounting
800 mm
5
from backside

### Mandatory Accessories

## KWC

Fitting unit for wall mounting

Modell-Linie: FITTING-UNITS | AQFU0229

Taps | Fitting units



**F5S-Mix self-closing single-mixer for fitting unit or wall flange**

**2030058991**  
F5SM1011



**F5L-Therm single-lever thermostatic mixer for tap unit or wall flange**

**2030065268**  
F5LT1033



**F5E-Mix electronic washbasin mixer for fitting unit or wall flange**

**2030058995**  
F5EM1015

## Spare Parts



**Stainless steel care set**

**2000109019**  
ZWSPL0024



**Cleaning product CHROMOL**

**2000105091**  
ZWSPL0023