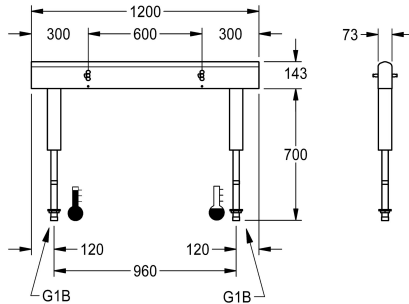


## KWC Fitting unit for double-row sanitary facilities

Modell-Linie: FITTING-UNITS | AQFU0230  
Taps | Fitting units



### KWC-No.

**2030064965**  
with 4 wash places, housing width 1200 mm

**2030064966**  
with 6 wash places, housing width 1800 mm

**2030064967**  
with 8 wash places, housing width 2400 mm

**2030064969**  
with 10 wash places, housing width 3000 mm

**2030064971**  
with 12 wash places, housing width 3600 mm

### overall width

1,200 mm

1,800 mm

2,400 mm

3,000 mm

3,600 mm

Fitting unit ready for connection with 4 wash places, for mounting on double-row sanitary facilities, for connection to hot and cold water from below via guide pipe holders. Housing made of stainless steel, satin finished with pre-assembled fitting connection blocks, connection options for power supply to electronic fittings, and

stainless steel piping.

Dimensions of housing 1200 x 470 x 73 mm (W x H x D)  
Wash place width 600 mm

### Technical Data

circulation	no
fitting	for separately shower head
hygiene flushing	no
type of mixing	yes
overall depth	73 mm
overall height	470 mm
overall width	1,200 mm
protective shutdown	no
type of mounting	mounted on product
wash place width	600 mm
number of wash places	4
position of water connection	from bottom

### Mandatory Accessories

## KWC

Fitting unit for double-row sanitary facilities

Modell-Linie: FITTING-UNITS | AQFU0230

Taps | Fitting units



**F5S-Mix self-closing single-mixer for fitting unit or wall flange**

**2030058991**  
F5SM1011



**F5E-Mix electronic washbasin mixer for fitting unit or wall flange**

**2030058995**  
F5EM1015



**F5L-Therm single-lever thermostatic mixer for tap unit or wall flange**

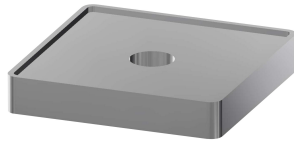
**2030065268**  
F5LT1033

### Optional Accessories



**Spacer sleeve**

**2030021234**  
ZAQFU0002



**Installation adapter**

**2030021225**  
ZAQFU0001

### Spare Parts



**Stainless steel care set**

**2000109019**  
ZWSPL0024



**Cleaning product CHROMOL**

**2000105091**  
ZWSPL0023