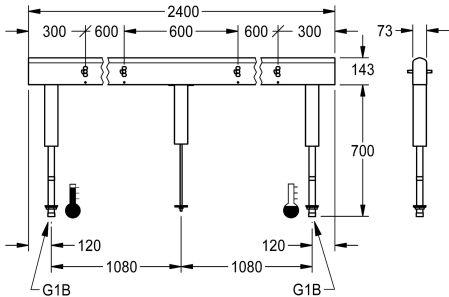


KWC
Fitting unit for double-row sanitary facilities

Modell-Linie: FITTING-UNITS | AQFU0232
Taps | Fitting units



KWC-No.
2030064965
with 4 wash places, housing width 1200 mm
2030064966
with 6 wash places, housing width 1800 mm
2030064967
with 8 wash places, housing width 2400 mm
2030064969
with 10 wash places, housing width 3000 mm
2030064971
with 12 wash places, housing width 3600 mm

overall width
1,200 mm
1,800 mm
2,400 mm
3,000 mm
3,600 mm

Fitting unit ready for connection with 8 wash places, for mounting on double-row sanitary facilities, for connection to hot and cold water from below via guide pipe holders. Housing made of stainless steel, satin finished with pre-assembled fitting connection blocks, connection options for power supply to electronic fittings, and

stainless steel piping.
Dimensions of housing 2400 x 470 x 73 mm (W x H x D)
Wash place width 600 mm

Technical Data
circulation
fitting
hygiene flushing
type of mixing
overall depth
overall height
overall width
protective shutdown
type of mounting
wash place width
number of wash places
position of water connection

no
for separately shower head
no
yes
73 mm
470 mm
2,400 mm
no
mounted on product
600 mm
8
from bottom

Mandatory Accessories



KWC

Fitting unit for double-row sanitary facilities

Modell-Linie: FITTING-UNITS | AQFU0232
Taps | Fitting units



F5S-Mix self-closing single-mixer for fitting unit or wall flange

2030058991
F5SM1011



F5L-Therm single-lever thermostatic mixer for tap unit or wall flange

2030065268
F5LT1033



F5E-Mix electronic washbasin mixer for fitting unit or wall flange

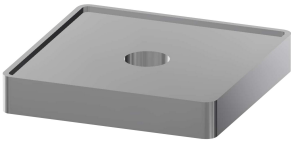
2030058995
F5EM1015

Optional Accessories



Spacer sleeve

2030021234
ZAQFU0002



Installation adapter

2030021225
ZAQFU0001

Spare Parts



Stainless steel care set

2000109019
ZWSPL0024



Cleaning product CHROMOL

2000105091
ZWSPL0023