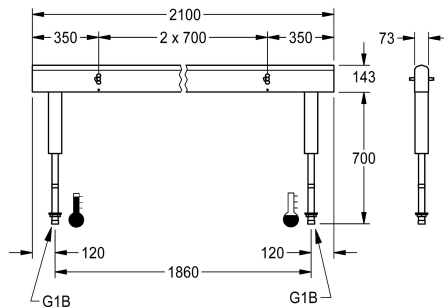


Fitting unit for double-row sanitary facilities

Modell-Linie: FITTING-UNITS | AQFU0236
Taps | Fitting units



KW C-No.

2030064973
with 4 wash places, housing width 1400 mm

2030064974
with 6 wash places, housing width 2100 mm

2030064977
with 8 wash places, housing width 2800 mm

2030064979
with 10 wash places, housing width 3500 mm

2030064984
with 12 wash places, housing width 4200 mm

overall width

1,400 mm

2,100 mm

2,800 mm

3,500 mm

4,200 mm

Fitting unit ready for connection with 6 wash places, for mounting on double-row sanitary facilities, for connection to hot and cold water from below via guide pipe holders. Housing made of stainless steel, satin finished with pre-assembled fitting connection blocks, connection options for power supply to electronic fittings, and

stainless steel piping.

Dimensions of housing 2100 x 470 x 73 mm (W x H x D)
Wash place width 700 mm

Technical Data

circulation	no
fitting	for separately shower head
hygiene flushing	no
type of mixing	yes
overall depth	73 mm
overall height	470 mm
overall width	2,100 mm
protective shutdown	no
type of mounting	mounted on product
wash place width	700 mm
number of wash places	6
position of water connection	from bottom

Mandatory Accessories

KWC
Fitting unit for double-row sanitary facilities

Modell-Linie: FITTING-UNITS | AQFU0236
Taps | Fitting units



F5S-Mix self-closing single-mixer for fitting unit or wall flange

2030058991
F5SM1011



F5L-Therm single-lever thermostatic mixer for tap unit or wall flange

2030065268
F5LT1033



F5E-Mix electronic washbasin mixer for fitting unit or wall flange

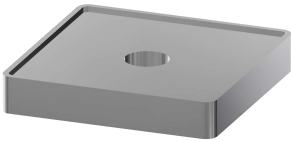
2030058995
F5EM1015

Optional Accessories



Spacer sleeve

2030021234
ZAQFU0002



Installation adapter

2030021225
ZAQFU0001

Spare Parts



Stainless steel care set

2000109019
ZWSPL0024



Cleaning product CHROMOL

2000105091
ZWSPL0023