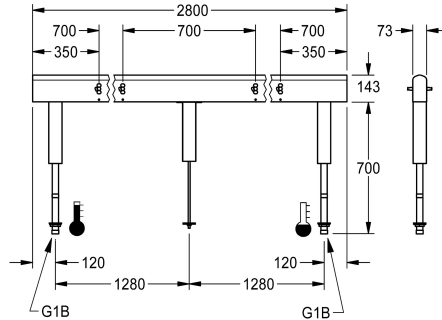


## KWC Fitting unit for double-row sanitary facilities

Modell-Linie: FITTING-UNITS | AQFU0237  
Taps | Fitting units



### KWC-No.

**2030064973**  
with 4 wash places, housing width 1400 mm

**2030064974**  
with 6 wash places, housing width 2100 mm

**2030064977**  
with 8 wash places, housing width 2800 mm

**2030064979**  
with 10 wash places, housing width 3500 mm

**2030064984**  
with 12 wash places, housing width 4200 mm

### overall width

1,400 mm

2,100 mm

2,800 mm

3,500 mm

4,200 mm

Fitting unit ready for connection with 8 wash places, for mounting on double-row sanitary facilities, for connection to hot and cold water from below via guide pipe holders. Housing made of stainless steel, satin finished with pre-assembled fitting connection blocks, connection options for power supply to electronic fittings, and

stainless steel piping.

Dimensions of housing 2800 x 470 x 73 mm (W x H x D)  
Wash place width 700 mm

### Technical Data

circulation	no
fitting	for separately shower head
hygiene flushing	no
type of mixing	yes
overall depth	73 mm
overall height	470 mm
overall width	2,800 mm
protective shutdown	no
type of mounting	mounted on product
wash place width	700 mm
number of wash places	8
position of water connection	from bottom

### Mandatory Accessories

## KWC

Fitting unit for double-row sanitary facilities

Modell-Linie: FITTING-UNITS | AQFU0237

Taps | Fitting units



**F5S-Mix self-closing single-mixer for fitting unit or wall flange**

**2030058991**  
F5SM1011



**F5L-Therm single-lever thermostatic mixer for tap unit or wall flange**

**2030065268**  
F5LT1033



**F5E-Mix electronic washbasin mixer for fitting unit or wall flange**

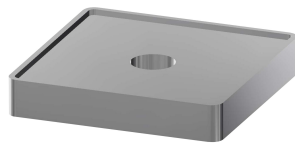
**2030058995**  
F5EM1015

### Optional Accessories



**Spacer sleeve**

**2030021234**  
ZAQFU0002



**Installation adapter**

**2030021225**  
ZAQFU0001

### Spare Parts



**Stainless steel care set**

**2000109019**  
ZWSPL0024



**Cleaning product CHROMOL**

**2000105091**  
ZWSPL0023