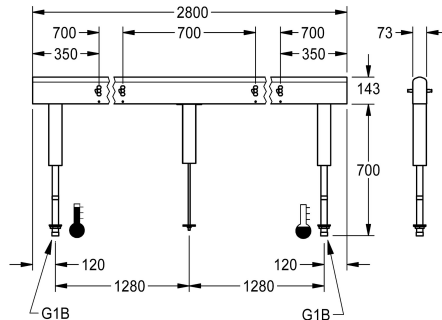


Fitting unit for double-row sanitary facilities

Modell-Linie: FITTING-UNITS | AQFU0237
Taps | Fitting units



KWC-No.	overall width
2030064973 with 4 wash places, housing width 1400 mm	1,400 mm
2030064974 with 6 wash places, housing width 2100 mm	2,100 mm
2030064977 with 8 wash places, housing width 2800 mm	2,800 mm
2030064979 with 10 wash places, housing width 3500 mm	3,500 mm
2030064984 with 12 wash places, housing width 4200 mm	4,200 mm

Fitting unit ready for connection with 8 wash places, for mounting on double-row sanitary facilities, for connection to hot and cold water from below via guide pipe holders. Housing made of stainless steel, satin finished with pre-assembled fitting connection blocks, connection options for power supply to electronic fittings, and

stainless steel piping.

Dimensions of housing 2800 x 470 x 73 mm (W x H x D)
Wash place width 700 mm

Technical Data	
circulation	no
fitting	for separately shower head
hygiene flushing	no
type of mixing	yes
overall depth	73 mm
overall height	470 mm
overall width	2,800 mm
protective shutdown	no
type of mounting	mounted on product
wash place width	700 mm
number of wash places	8
position of water connection	from bottom

Mandatory Accessories

KWC
Fitting unit for double-row sanitary facilities

Modell-Linie: FITTING-UNITS | AQFU0237
Taps | Fitting units



F5S-Mix self-closing single-mixer for fitting unit or wall flange

2030058991
F5SM1011



F5L-Therm single-lever thermostatic mixer for tap unit or wall flange

2030065268
F5LT1033



F5E-Mix electronic washbasin mixer for fitting unit or wall flange

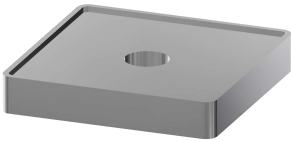
2030058995
F5EM1015

Optional Accessories



Spacer sleeve

2030021234
ZAQFU0002



Installation adapter

2030021225
ZAQFU0001

Spare Parts



Stainless steel care set

2000109019
ZWSPL0024



Cleaning product CHROMOL

2000105091
ZWSPL0023