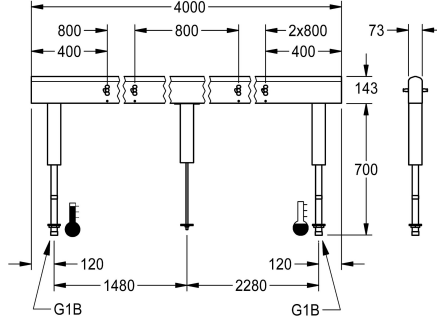


## KWC Fitting unit for double-row sanitary facilities

Modell-Linie: FITTING-UNITS | AQFU0243  
Taps | Fitting units



KWC-No.
<b>2030064986</b> with 4 wash places, housing width 1600 mm
<b>2030064987</b> with 6 wash places, housing width 2400 mm
<b>2030064988</b> with 8 wash places, housing width 3200 mm
<b>2030064992</b> with 10 wash places, housing width 4000 mm

overall width
1,600 mm
2,400 mm
3,200 mm
4,000 mm

Fitting unit ready for connection with 10 wash places, for mounting on double-row sanitary facilities, for connection to hot and cold water from below via guide pipe holders. Housing made of stainless steel, satin finished with pre-assembled fitting connection blocks, connection options for power supply to electronic fittings, and

stainless steel piping.  
Dimensions of housing 4000 x 470 x 73 mm (W x H x D)  
Wash place width 800 mm

Technical Data
circulation
fitting
hygiene flushing
type of mixing
overall depth
overall height
overall width
protective shutdown
type of mounting
wash place width
number of wash places
position of water connection

no
for separately shower head
no
yes
73 mm
470 mm
4,000 mm
no
mounted on product
800 mm
10
from bottom

### Mandatory Accessories

## KWC

Fitting unit for double-row sanitary facilities

Modell-Linie: FITTING-UNITS | AQFU0243

Taps | Fitting units



**F5S-Mix self-closing single-mixer for fitting unit or wall flange**

**2030058991**  
F5SM1011



**F5L-Therm single-lever thermostatic mixer for tap unit or wall flange**

**2030065268**  
F5LT1033



**F5E-Mix electronic washbasin mixer for fitting unit or wall flange**

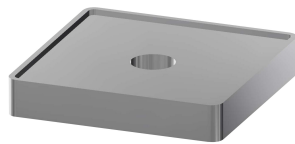
**2030058995**  
F5EM1015

### Optional Accessories



**Spacer sleeve**

**2030021234**  
ZAQFU0002



**Installation adapter**

**2030021225**  
ZAQFU0001

### Spare Parts



**Stainless steel care set**

**2000109019**  
ZWSPL0024



**Cleaning product CHROMOL**

**2000105091**  
ZWSPL0023