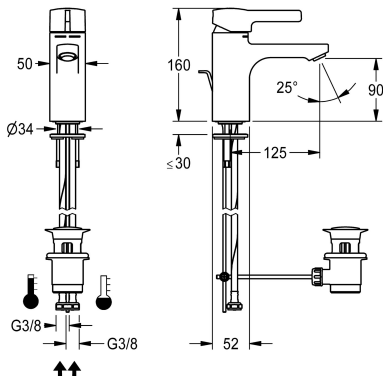


KWC F5L-Mix
Single-lever pillar mixer with pop-up waste

Modell-Linie: F5L | F5LM1035
Taps | Manual taps



KWC-No.

2030066468

F5L-Mix single-lever pillar mixer DN 15 for sanitary facilities. Mixer cartridge with ceramic disc technology and adjustable, turn-proof temperature stop. For connection to hot water and cold water via hoses, includes strainers. All-metal construction, high-polished

chrome-plated brass. Anti-theft aerator, SLIM design, with integrated flow rate controller 5.0 l/min, projection 125 mm. With pop-up waste set drain fitting G 1 1/4 mm, chrome-plated.

Technical Data

with backflow preventer
depressurised
with filter
functional principle
hygiene flushing
diameter nominal
inlet size
Locking mechanism
material fitting
minimum flow pressure
Pop-up waste set
with rosettes/cover plate
protective shutdown
sound insulation
Spout
spout projection
surface finish fitting
surface treatment fitting
temperature limit
thermal disinfection
type of mounting
type of operation
type of tap
water connection
Accent colour
Basic colour

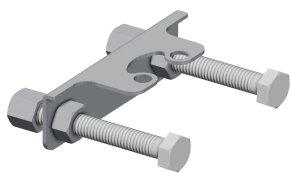
no
no
yes
manual
no
DN 15
G 3/8
Top section, non-ceramic
brass
1 bar
yes
no
no
no
fixed
125 mm
chromed
polished
yes
no
tap hole
manual operation
pillar tap
hose (gland nut)
none
chrome-look (glossy)



KWC F5L-Mix
Single-lever pillar mixer with pop-up waste

Modell-Linie: F5L | F5LM1035
Taps | Manual taps

Optional Accessories



Anti-twist protection

2030041324
ACLM1009

Spare Parts



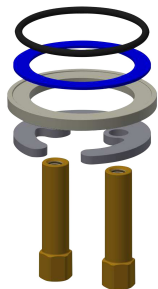
Lever cap

2030041380
ASLM1001



Dust cap

2030010039
EAQFT0004



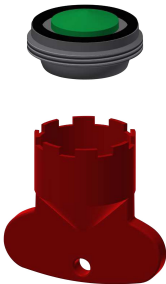
Quick-action fastener

2030010045
EAQFT0005



Hose

2030041311
ASXX1005



Aerator 5.0 l/min

2030041011
ASXX1004



Pop-up waste set

2030045528
ASLM1004



Mounting key

2030041329
ACXX1003