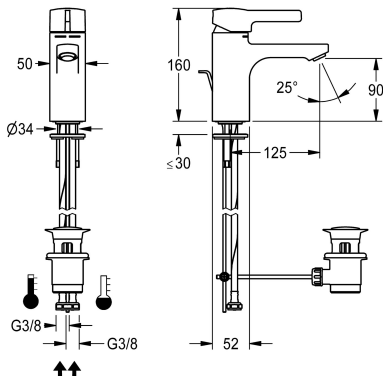


KWC F5L-Mix  
Single-lever pillar mixer with pop-up waste

Modell-Linie: F5L | F5LM1035  
Taps | Manual taps



KWC-No.

2030066468

F5L-Mix single-lever pillar mixer DN 15 for sanitary facilities. Mixer cartridge with ceramic disc technology and adjustable, turn-proof temperature stop. For connection to hot water and cold water via hoses, includes strainers. All-metal construction, high-polished

chrome-plated brass. Anti-theft aerator, SLIM design, with integrated flow rate controller 5.0 l/min, projection 125 mm. With pop-up waste set drain fitting G 1 1/4 mm, chrome-plated.

Technical Data

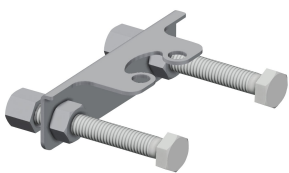
with backflow preventer	no
depressurised	no
with filter	yes
functional principle	manual
hygiene flushing	no
diameter nominal	DN 15
inlet size	G 3/8
Locking mechanism	Top section, non-ceramic
material fitting	brass
minimum flow pressure	1 bar
Pop-up waste set	yes
with rosettes/cover plate	no
protective shutdown	no
sound insulation	no
Spout	fixed
spout projection	125 mm
surface finish fitting	chromed
surface treatment fitting	polished
temperature limit	yes
thermal disinfection	no
type of mounting	tap hole
type of operation	manual operation
type of tap	pillar tap
water connection	hose (gland nut)
Accent colour	none
Basic colour	chrome-look (glossy)



**KWC** F5L-Mix  
Single-lever pillar mixer with pop-up waste

**Modell-Linie:** F5L | F5LM1035  
Taps | Manual taps

**Optional Accessories**



**Anti-twist protection**

**2030041324**  
ACLM1009

**Spare Parts**



**Dust cap**

**2030010039**  
EAQFT0004

**Mounting key**

**2030041329**  
ACXX1003