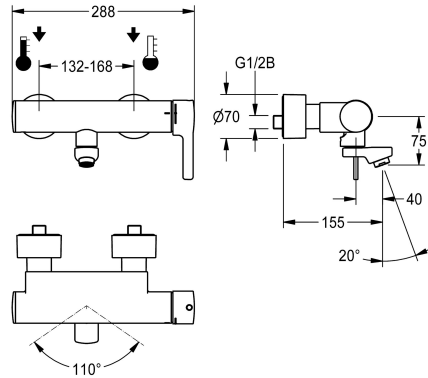
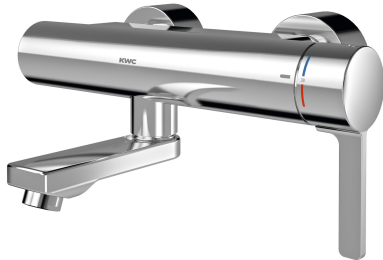


## KWC F5L-Therm Thermostatic single-lever wall-mounted mixer

Modell-Linie: F5L | F5LT1004  
Taps | Manual taps



### KWC-No.

**2030066484**

Projection 215 mm

**2030066483**

Projection 155 mm

**2030066486**

Projection 275 mm

### spout projection

215 mm

155 mm

275 mm

F5L-Therm thermostatic single-lever mixer as DN 15 wall-mounted mixer for wall mounting with lockable swivelling spout, for sanitary facilities. Thermostatically-controlled mixer cartridge with expansion element and active scald protection as well as adjustable and turn-proof temperature stop, and ceramic disc technology. With mechanism for optional hygiene unit for automatic hygiene flushing, program-controlled thermal disinfection (additional bypass solenoid-operated flush valve cartridge

necessary) and storage of statistical data. For connection to hot and cold water. Scald-protected, safe-touch housing, all-metal construction, high-polished chrome-plated brass. Laminar jet controller with integrated flow rate controller 6.0 l/min. With adjustable and lockable connections with backflow preventers and strainers, fully covered by depth-adjustable screw rosettes. Projection 155 mm.

### Technical Data

with backflow preventer

yes

depressurised

no

with filter

yes

functional principle

manual

hygiene flushing

prepared

diameter nominal

DN 15

inlet size

G 1/2 B

Locking mechanism

Top section, ceramic

material fitting

brass

minimum flow pressure

1 bar

type of mixing

with thermostat

Pop-up waste set

no

with rosettes/cover plate

yes

protective shutdown

no

sound insulation

no

Spout

rotating, bottom

spout projection

155 mm

surface finish casing

chromed

surface finish fitting

chromed

surface treatment fitting

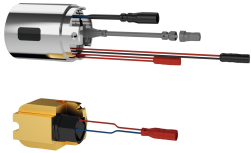
polished

## KWC F5L-Therm Thermostatic single-lever wall-mounted mixer

Modell-Linie: F5L | F5LT1004  
Taps | Manual taps

temperature limit	yes
thermal disinfection	yes
type of mounting	wall mounting
type of operation	manual operation
type of tap	bib tap
volume flow rate at 3 bar	0.1 l/s
water connection	S-connections
Accent colour	none
Basic colour	chrome-look (glossy)

### Optional Accessories



Hygiene unit for F5L single-lever wall mixers

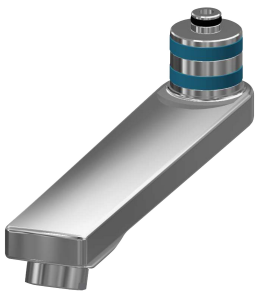
**2030039446**  
ACLM9001



Theft-proof housing for aerator

**2000104778**  
ZTAPS0005

### Spare Parts



Swivel spout, 160 mm

**2030032815**  
ASXX1002



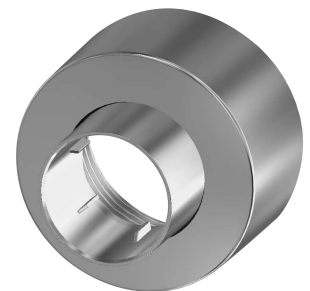
Laminar jet regulator

**2030012352**  
ETAPS0037



Mounting set

**2030003401**  
EAQLT0009



Screw rosette

**2030046777**  
ASXX9003