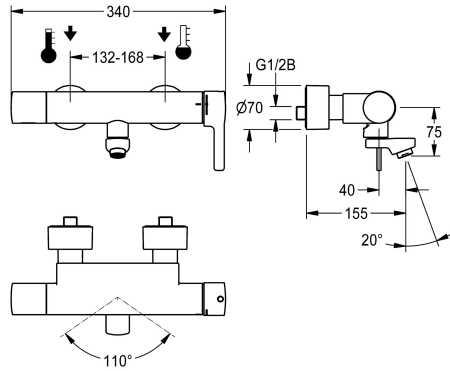


## KWC F5L-Therm Thermostatic single-lever wall-mounted mixer

Modell-Linie: F5L | F5LT1012  
Taps | Manual taps



### KWC-No.

**2030066491**  
Projection 215 mm

**2030066490**  
Projection 155 mm

**2030066492**  
Projection 275 mm

### spout projection

100 mm

40 mm

160 mm

F5L-Therm thermostatic single-lever mixer as DN 15 wall-mounted mixer for wall mounting with lockable swivelling spout, for sanitary facilities. Thermostatically-controlled mixer cartridge with expansion element and active scald protection as well as adjustable and turn-proof temperature stop, and ceramic disc technology. With pre-assembled hygiene unit including 6 V lithium battery (CR P2) for automatic hygiene flushing and program-controlled thermal disinfection (additional bypass solenoid-operated flush valve cartridge necessary) and storage of statistical

data. For connection to hot and cold water. Scald-protection, safe-touch housing, all-metal construction, high-polished chrome-plated brass. Laminar jet controller with integrated flow rate controller 6.0 l/min. With adjustable and lockable connections with backflow preventers and strainers, fully covered by depth-adjustable screw rosettes. Projection 155 mm. Activated hygiene flushing, fixed interval of 24 hours. With option for parameterization and communication via optional, bidirectional remote control.

### Technical Data

with backflow preventer

yes

calculation flow rate cold wat

0.07 l/s

calculation flow rate hot wate

0.07 l/s

default automatic hygiene flus

fixed interval 24 hours

depressurised

no

with filter

yes

adjustable flow time

no

functional principle

manual

hygiene flushing

yes

diameter nominal

DN 15

inlet size

G 1/2 B

Locking mechanism

Top section, ceramic

material fitting

brass-look

minimum flow pressure

1 bar

type of mixing

with thermostat

number of batteries

1

overall width

340 mm

Parameterization

remote control

Pop-up waste set

no

power supply connection

Battery 6 V

## KWC F5L-Therm

Thermostatic single-lever wall-mounted mixer

**Modell-Linie: F5L | F5LT1012**

Taps | Manual taps

power consumption	1.5 Voltampere
Type of power supply	Battery
protective system IP	IP59K
with rosettes/cover plate	yes
protective shutdown	no
sound insulation	no
Spout	rotating, bottom
spout projection	40 mm
surface finish casing	chromed
surface finish fitting	chromed
surface treatment fitting	polished
temperature limit	yes
thermal disinfection	yes
with transformer/power supply	no
type of batteries	CR-P2 Lithium battery 6V
type of mounting	wall mounting
type of operation	manual operation
type of sensor	opto-electronic sensor
type of tap	bib tap
Volume flow rate hygiene flush	0.05 l/s
volume flow rate at 3 bar	0.1 l/s
water connection	S-connections
Accent colour	none
Basic colour	chrome-look (glossy)

### Optional Accessories



**Bidirectional remote control for electronic fittings F3 and F5**

**2030036654**  
ACEX9005



**2-button remote control for fittings F3 and F5**

**2030036849**  
ACEX9004



**Solenoid valve cartridge**

**2030045522**  
ACXX9002



**Theft-proof housing for aerator**

**2000104778**  
ZTAPS0005

### Spare Parts

## KWC F5L-Therm

Thermostatic single-lever wall-mounted mixer

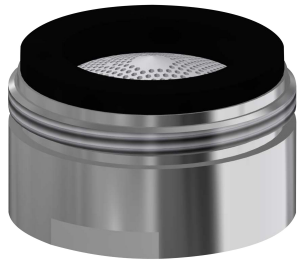
Modell-Linie: F5L | F5LT1012

Taps | Manual taps



Swivel spout, 160 mm

**2030032815**  
ASXX1002



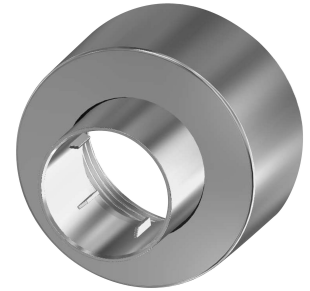
Laminar jet regulator

**2030012352**  
ETAPS0037



Mounting set

**2030003401**  
EAQLT0009



Screw rosette

**2030046777**  
ASXX9003



Solenoid valve cartridge

**2030045522**  
ACXX9002



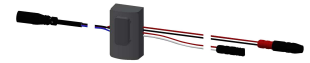
Battery compartment

**3600002063**  
ACEX9023



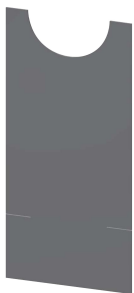
Lithium battery 6 V

**2000104846**  
EPRTR0008



Sensor, ID 81/00001

**2030041485**  
ASLM9001



F5 Foil

**2030053034**  
ASET2010