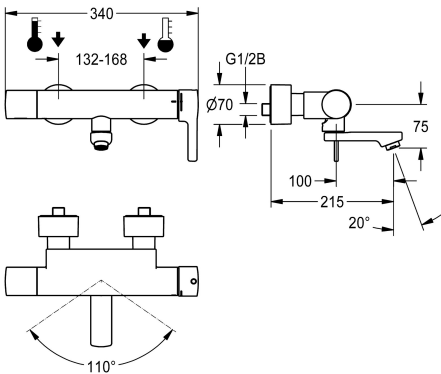


KWC F5L-Therm  
Thermostatic single-lever wall-mounted mixer

Modell-Linie: F5L | F5LT1013  
Taps | Manual taps



KWC-No.

2030066491  
Projection 215 mm

2030066490  
Projection 155 mm

2030066492  
Projection 275 mm

spout projection

100 mm

40 mm

160 mm

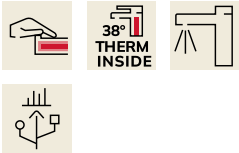
F5L-Therm thermostatic single-lever mixer as DN 15 wall-mounted mixer for wall mounting with lockable swivelling spout, for sanitary facilities. Thermostatically-controlled mixer cartridge with expansion element and active scald protection as well as adjustable and turn-proof temperature stop, and ceramic disc technology. With pre-assembled hygiene unit including 6 V lithium battery (CR P2) for automatic hygiene flushing and program-controlled thermal disinfection (additional bypass solenoid-operated flush valve cartridge necessary) and storage of statistical

data. For connection to hot and cold water. Scald-protection, safe-touch housing, all-metal construction, high-polished chrome-plated brass. Laminar jet controller with integrated flow rate controller 6.0 l/min. With adjustable and lockable connections with backflow preventers and strainers, fully covered by depth-adjustable screw rosettes. Projection 215 mm. Activated hygiene flushing, fixed interval of 24 hours. With option for parameterization and communication via optional, bidirectional remote control.

Technical Data

with backflow preventer
calculation flow rate cold wat
calculation flow rate hot wate
default automatic hygiene flus
depressurised
with filter
adjustable flow time
functional principle
hygiene flushing
diameter nominal
inlet size
Locking mechanism
material fitting
minimum flow pressure
type of mixing
number of batteries
overall depth
overall width
Parameterization
Pop-up waste set

yes
0.07 l/s
0.07 l/s
fixed interval 24 hours
no
yes
no
manual
yes
DN 15
G 1/2 B
Top section, ceramic
brass-look
1 bar
with thermostat
1
215 mm
340 mm
remote control
no



KWC F5L-Therm  
Thermostatic single-lever wall-mounted mixer

Modell-Linie: F5L | F5LT1013  
Taps | Manual taps

power supply connection	Battery 6 V
power consumption	1.5 Voltampere
Type of power supply	Battery
protective system IP	IP59K
with rosettes/cover plate	yes
protective shutdown	no
sound insulation	no
Spout	rotating, bottom
spout projection	100 mm
surface finish casing	chromed
surface finish fitting	chromed
surface treatment fitting	polished
temperature limit	yes
thermal disinfection	yes
with transformer/power supply	no
type of batteries	CR-P2 Lithium battery 6V
type of mounting	wall mounting
type of operation	manual operation
type of sensor	opto-electronic sensor
type of tap	bib tap
Volume flow rate hygiene flush	0.05 l/s
volume flow rate at 3 bar	0.1 l/s
water connection	S-connections
Accent colour	none
Basic colour	chrome-look (glossy)

Optional Accessories



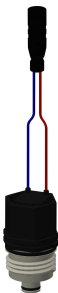
Bidirectional remote control for  
electronical fittings F3 and F5

2030036654  
ACEX9005



2-button remote control for fittings F3  
and F5

2030036849  
ACEX9004



Solenoid valve cartridge

2030045522  
ACXX9002



Theft-proof housing for aerator

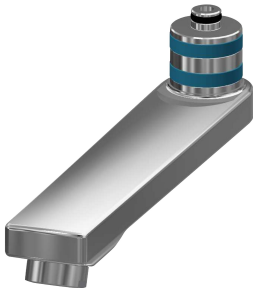
2000104778  
ZTAPS0005

Spare Parts



**KWC** F5L-Therm  
Thermostatic single-lever wall-mounted mixer

Modell-Linie: F5L | F5LT1013  
Taps | Manual taps



Swivel spout, 160 mm

2030032815  
ASXX1002



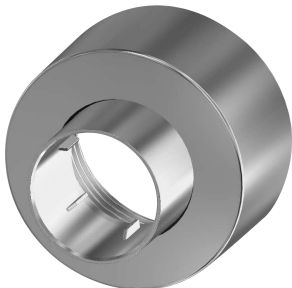
Laminar jet regulator

2030012352  
ETAPS0037



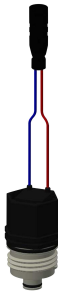
Mounting set

2030003401  
EAQLT0009



Screw rosette

2030046777  
ASXX9003



Solenoid valve cartridge

2030045522  
ACXX9002



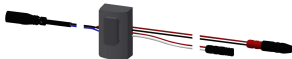
Battery compartment

3600002063  
ACEX9023



Lithium battery 6 V

2000104846  
EPRTR0008



Sensor, ID 81/00001

2030041485  
ASLM9001



F5 Foil

2030053034  
ASET2010