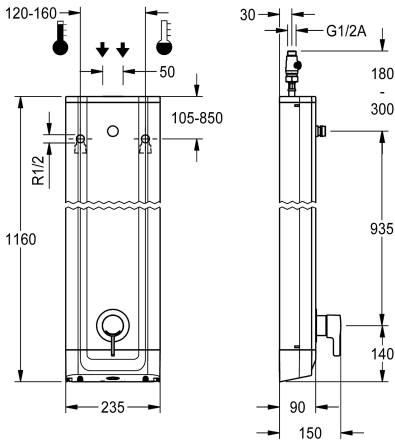


KWC F5L-Therm
Stainless steel shower panel

Modell-Linie: F5L | F5LT2022
Showers | Manual shower



KWC-No.

2030066541

F5L-Therm stainless-steel shower panel for wall mounting with single-lever thermostat DN 15 and connecting nozzle for shower head. For connection to hot and cold water. Function block with integrated mixing cartridge and mechanism for an optional water hygiene unit for automatic water hygiene flushing, program-controlled thermal disinfection (additional bypass solenoid-operated flush valve cartridge necessary) and storage of statistical data. Thermostatically-controlled mixer cartridge with expansion element and active scald protection as well as adjustable and turn-proof temperature stop, and ceramic disc technology. All-metal

construction, visible parts high-polished, chrome-plated. Connecting nozzles for separate required DN 15 KWC shower head with pre-fitted flow regulator 9.0 l/min. Stainless steel housing with raised function surface and cover caps made of plastic. With adjustable and lockable connections with backflow preventer and strainers.

Housing dimensions 235 x 1160 x 90 mm (W x H x D)

Shower head must be ordered separately.

Technical Data

additional connections
with backflow preventer
circulation
compatible A3000 open
connection with pay water disp
with filter
adjustable flow time
functional principle
for hand shower
hygiene flushing
diameter nominal
inlet size
Locking mechanism
material casing
material code casing
material fitting
minimum flow pressure
type of mixing
overall depth
overall height
overall width
with rosettes/cover plate

no
yes
no
no
not possible
yes
no
manual
no
prepared
DN 15
G 1/2 A
Top section, ceramic
stainless steel
1.4301 Chrome Nickel steel V2A
brass-look
1 bar
with thermostat
90 mm
1,160 mm
235 mm
yes



KWC F5L-Therm
Stainless steel shower panel

Modell-Linie: F5L | F5LT2022
Showers | Manual shower

protective shutdown	no
shower pipe draining	no
Shower head	for separately shower head
with shower set	no
sound insulation	no
surface finish casing	satin finished
surface finish fitting	chromed
surface treatment fitting	polished
temperature limit	yes
thermal disinfection	yes
type of mounting	wall mounting
type of operation	manual operation
type of shower	shower panel
volume flow rate at 3 bar	0.15 l/s
water connection	hose (gland nut)
position of water connection	from top / backside
with soap dish	no
Accent colour	chrome-look (glossy)
Basic colour	stainless steel-look

Mandatory Accessories



AQUAJET-Slimline shower head for KWC shower panels and systems
2030054255
SHAS0011

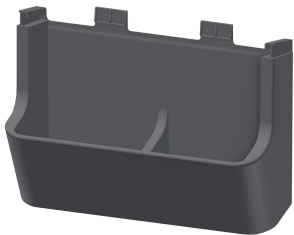
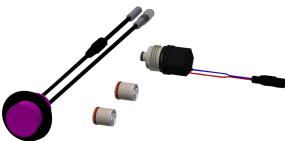
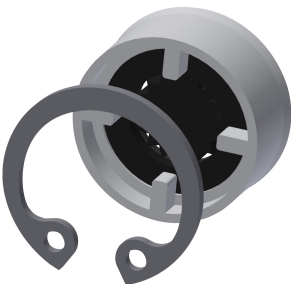
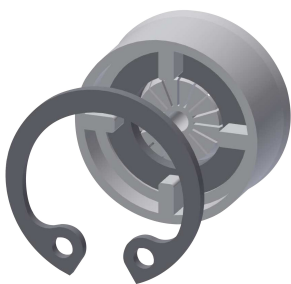


AQUAJET-Comfort shower head for KWC shower panels and systems
2030054254
SHAC0011



MÜNCHEN shower head for KWC shower panels and systems
2030054793
SHMU0011

Optional Accessories





KWC F5L-Therm
Stainless steel shower panel

Modell-Linie: F5L | F5LT2022
Showers | Manual shower

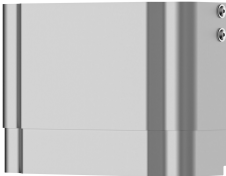
Flow controller 6.0 l/min

2030027586
ESHHE0004



Flow controller 12.0 l/min

2000104783
ESHHE0002



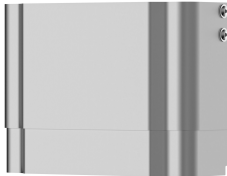
Hygiene unit for F5L single lever mixer shower panel

2030057065
ACLM2003



Shower gel dish for F5 shower panels made of stainless steel

2030057077
ACXX2021



Housing extension for F5 shower panels made of stainless steel

2030057066
ACXX2011



Housing extension for F5 shower panels made of stainless steel

2030057067
ACXX2012

Housing extension for F5 shower panels made of stainless steel

2030057068
ACXX2013

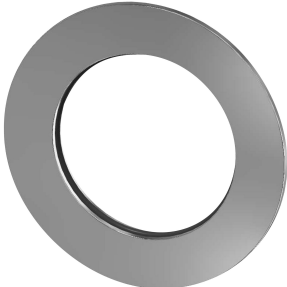
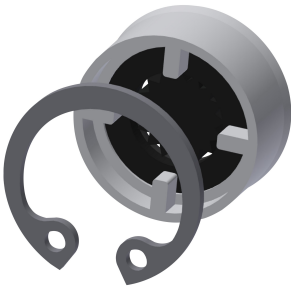
Housing extension for F5 shower panels made of stainless steel

2030057069
ACXX2014

Housing extension for F5 shower panels made of stainless steel

2030057070
ACXX2015

Spare Parts





KWC F5L-Therm
Stainless steel shower panel

Modell-Linie: F5L | F5LT2022
Showers | Manual shower

Flow controller 9,0 l/min

2000104782
ESHHE0001

Rosette

2030048765
ASET2006

Stainless steel care set

2000109019
ZWSPL0024