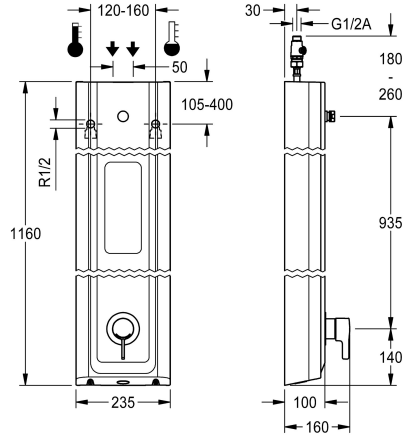


## KWC F5L-Therm

Shower panel made of MIRANIT with shower gel shelf

Modell-Linie: F5L | F5LT2026  
Showers | Manual shower



### KWC-No.

**2030066546**

F5L-Therm shower panel made from mineral material for wall mounting with single-lever thermostat DN 15 and connecting nozzle for shower head. For connection to hot and cold water. Function block with integrated mixing cartridge and pre-assembled hygiene unit including sensor with control electronics to perform automatic water hygiene flushing, program-controlled thermal disinfection (additional bypass solenoid-operated flush valve cartridge necessary) and storage of statistical data. Thermostatically-controlled mixer cartridge with expansion element and active scald protection as well as adjustable and turn-proof temperature stop, and ceramic disc technology. All-metal construction, visible parts high-polished, chrome-plated. Connecting nozzles for separate required DN 15 KWC shower head with pre-fitted flow regulator 9.0 l/min. Housing with raised function surface and seamless moulded

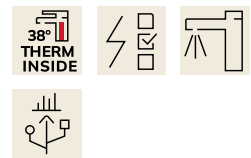
shower gel shelf made of MIRANIT resin-bonded mineral material with pore-free smooth surface (temperature-resistant up to 80 °C), Alpine white colour. With adjustable and lockable connections with backflow preventer and strainers. Activated hygiene flushing, fixed interval of 24 hours. With option for parameterization and communication via optional, bidirectional remote control. Optional hygiene unit for battery operation with 6 V lithium battery (CR-P2) per fitting or separate power supply via plug-in power supply unit 6.75 V/12 V DC.

Housing dimensions 235 x 1160 x 100 mm (W x H x D)

Shower head and battery compartment including battery or power supply unit with extension cable must be ordered separately.

### Technical Data

|                                 |                         |
|---------------------------------|-------------------------|
| additional connections          | no                      |
| with backflow preventer         | yes                     |
| circulation                     | no                      |
| compatible A3000 open           | no                      |
| connection with pay water disp  | not possible            |
| default automatic hygiene flush | fixed interval 24 hours |
| with filter                     | yes                     |
| adjustable flow time            | no                      |
| functional principle            | manual                  |
| for hand shower                 | no                      |
| hygiene flushing                | yes                     |
| diameter nominal                | DN 15                   |
| inlet size                      | G 1/2 A                 |
| Locking mechanism               | Top section, ceramic    |
| material casing                 | mineral material        |
| material code casing            | Miranit                 |
| material fitting                | brass-look              |
| minimum flow pressure           | 1 bar                   |
| type of mixing                  | with thermostat         |
| overall depth                   | 100 mm                  |



## KWC F5L-Therm

Shower panel made of MIRANIT with shower gel shelf

Modell-Linie: F5L | F5LT2026

Showers | Manual shower

|                               |                            |
|-------------------------------|----------------------------|
| overall height                | 1,160 mm                   |
| overall width                 | 235 mm                     |
| Parameterization              | remote control             |
| power supply connection       | 6,75 / 12 VDC              |
| position of power connection  | from top / backside        |
| Type of power supply          | Other                      |
| protective system IP          | IP59K                      |
| with rosettes/cover plate     | yes                        |
| protective shutdown           | no                         |
| shower pipe draining          | no                         |
| Shower head                   | for separately shower head |
| with shower set               | no                         |
| sound insulation              | no                         |
| surface finish fitting        | chromed                    |
| surface treatment fitting     | polished                   |
| temperature limit             | yes                        |
| thermal disinfection          | yes                        |
| with transformer/power supply | no                         |
| type of mounting              | wall mounting              |
| type of operation             | manual operation           |
| type of sensor                | opto-electronic sensor     |
| type of shower                | shower panel               |
| volume flow rate at 3 bar     | 0,15 l/s                   |
| water connection              | hose (gland nut)           |
| position of water connection  | from top / backside        |
| with soap dish                | integrated                 |
| Accent colour                 | chrome-look (glossy)       |
| Basic colour                  | white                      |

### Mandatory Accessories



**AQUAJET-Slimline shower head for KWC shower panels and systems**

**2030054255**  
SHAS0011



**AQUAJET-Comfort shower head for KWC shower panels and systems**

**2030054254**  
SHAC0011



**MÜNCHEN shower head for KWC shower panels and systems**

**2030054793**  
SHMU0011



**Battery compartment**

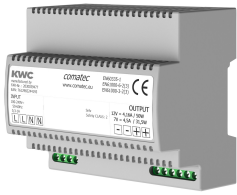
**3600002063**  
ACEX9023

## KWC F5L-Therm

Shower panel made of MIRANIT with shower gel shelf

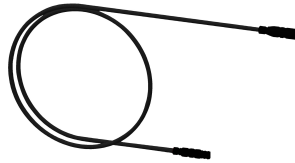
Modell-Linie: F5L | F5LT2026

Showers | Manual shower



Power supply unit

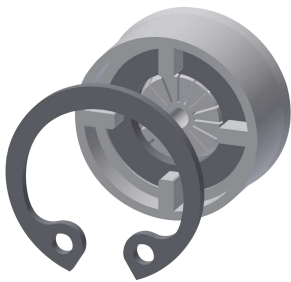
**2030039477**  
ACEX9001



Extension cable 5 m

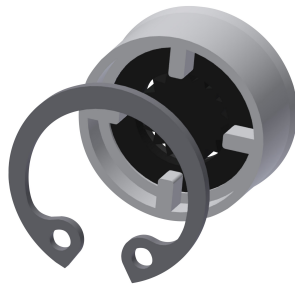
**2030043814**  
ACEX9010

### Optional Accessories



Flow controller 6.0 l/min

**2030027586**  
ESHHE0004



Flow controller 12.0 l/min

**2000104783**  
ESHHE0002



Solenoid valve cartridge

**2030003033**  
EAQFU0001



Housing extension for F5 shower panels made of MIRANIT

**2030057071**  
ACXX2016



Housing extension for F5 shower panels made of MIRANIT

**2030057072**  
ACXX2017



Housing extension for F5 shower panels made of MIRANIT

**2030057073**  
ACXX2018



Housing extension for F5 shower panels made of MIRANIT

**2030057075**  
ACXX2019



Housing extension for F5 shower panels made of MIRANIT

**2030057076**  
ACXX2020

## KWC F5L-Therm

Shower panel made of MIRANIT with shower gel shelf

Modell-Linie: F5L | F5LT2026

Showers | Manual shower



**2-button remote control for fittings F3 and F5**

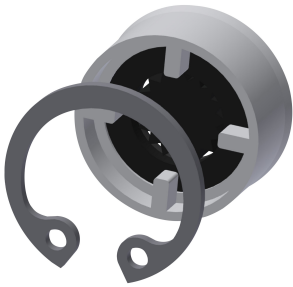
**2030036849**  
ACEX9004



**Bidirectional remote control for electrical fittings F3 and F5**

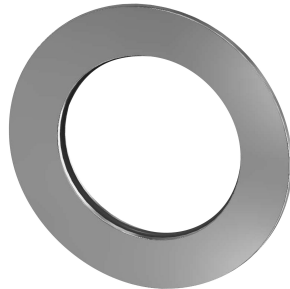
**2030036654**  
ACEX9005

### Spare Parts



**Flow controller 9,0 l/min**

**2000104782**  
ESHHE0001



**Rosette**

**2030048765**  
ASET2006



**Solenoid valve cartridge**

**2030003033**  
EAQFU0001