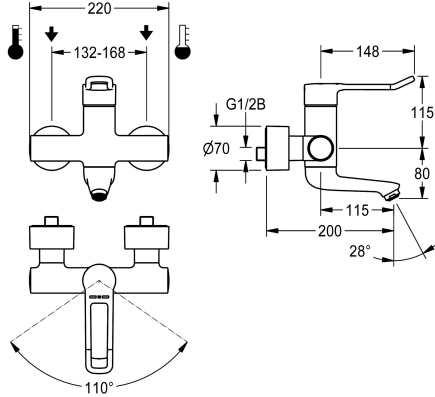


KWC F4LT-Med Thermostatic single-lever wall-mounted mixer

Modell-Linie: F4 | F4LT1005
Taps | Manual taps



KWC-No.

2030066753

Projection 200 mm

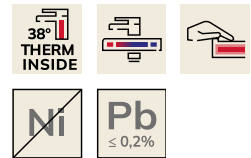
F4LT-Med thermostatic single lever mixer as DN 15 wall-mounted mixer for wall mounting with lockable swivelling spout, for sanitary facilities in the healthcare and nursing sectors, with 148 mm lever. Thermostat-controlled mixer cartridge with expansion element and active scald protection, fail-safe against backflow as well as adjustable and turn-proof temperature stop, and ceramic disc technology. Without additional backflow preventer for optimised drinking water hygiene. Lever cap with an ergonomic bracket design and slight curvature in the front with basalt-grey coating, in line with two-senses principle (tactile and visual). For connection to

hot and cold water. Tap optimised for cleaning, scald-protected, safe-touch housing, all-metal construction, polished chromium-plated brass. Decoupled from the tap housing, volume-reduced, smooth water flow from low-lead brass (lead proportion $\leq 0.2\%$), and without nickel coating. With thermal insulation components to reduce heat transfer from the tap housing to the cold-water line. Self-emptying spout with flow rate controller 9.0 l/min and laminar jet controller. With adjustable and lockable connections with strainers, fully covered by depth-adjustable screw rosettes. Projection 200 mm.

Technical Data

with backflow preventer
depressurised
adjustable flow time
functional principle
hygiene flushing
diameter nominal
inlet size
Locking mechanism
material fitting
minimum flow pressure
type of mixing
Pop-up waste set
protective shutdown
surface finish casing
surface finish fitting
surface treatment fitting
temperature limit
type of mounting
type of operation
type of tap
volume flow rate at 3 bar
water connection

no
no
no
manual
no
DN 15
G 1/2 B
Top section, ceramic
brass
1 bar
with thermostat
no
no
chromed
chromed
polished
yes
wall mounting
manual operation
bib tap
0.15 l/s
S-connections



KWC F4LT-Med Thermostatic single-lever wall-mounted mixer

Modell-Linie: F4 | F4LT1005
Taps | Manual taps

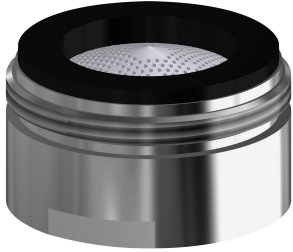
Accent colour _____

none _____

Basic colour _____

chrome-look (glossy) _____

Optional Accessories



Aerator

2030071309
ASXX1042