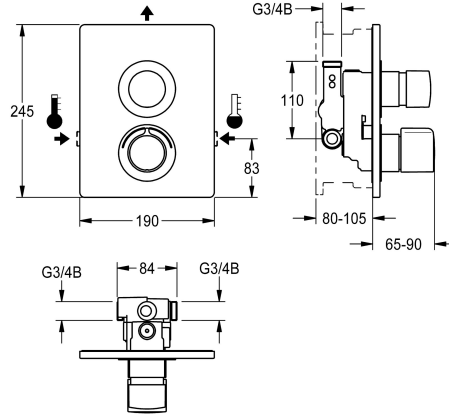


KWC F5S-Therm Self-closing thermostatic mixer

Modell-Linie: F5S | F5ST2034
Showers | Self closing showers



KWC-No.
2030067154
2030067163 With automatic shower pipe emptying
2030067158 Version without option for automatic water hygiene flushing or thermal disinfection
2030067167 with automatic shower pipe draining

shower pipe draining	thermal disinfection
no	yes
yes	yes
no	no
yes	no

F5S-Therm self-closing thermostatic mixer DN 15 as finished installation kit for installation in basic installation kit, for shower facilities. Hydraulically controlled, connects to hot and cold water. Function block with integrated FRAMIC self-closing cartridge and thermostat. FRAMIC self-closing cartridge, hydraulically controlled, low-maintenance and stagnation-free, with ceramic disc technology, self-closing, flow pressure-independent due to medium-separated design. Stepless adjustment of flow duration.

Thermostat with metal handle with adjustable and turn-proof temperature stop and option for manual thermal disinfection. All-metal construction, visible parts high-polished, chromium-plated. Holding frame including profile seal, stainless steel cover plate 190 x 245 mm with covered screw fixing, chromium-plated plastic rosettes, backflow preventer and strainers. Depth adjustability 25 mm.

Technical Data
additional connections
with backflow preventer
Built-in fitting model
calculation flow rate cold wat
calculation flow rate hot water
circulation
compatible A3000 open
connection with pay water disp
Cover plate height
Cover plate width
with filter
adjustable flow time
functional principle
for hand shower
hygiene flushing
diameter nominal
inlet size
Locking mechanism

no
yes
Finishing section
0.15 l/s
0.15 l/s
no
no
not possible
245 mm
190 mm
yes
yes
hydraulic self-closing
no
no
DN 15
G 3/4 B
Top section, ceramic

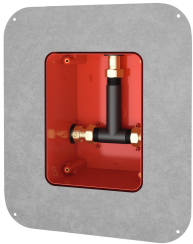


KWC F5S-Therm Self-closing thermostatic mixer

Modell-Linie: F5S | F5ST2034
Showers | Self closing showers

material casing	stainless steel
material fitting	brass
maximum flow time	35 Seconds
minimum flow pressure	1 bar
minimum flow time	5 Seconds
type of mixing	with thermostat
with rosettes/cover plate	yes
protective shutdown	no
shower pipe draining	no
sound insulation	no
surface finish casing	satin finished
surface finish fitting	chromed
surface treatment fitting	polished
temperature limit	yes
thermal disinfection	no
type of mounting	in-wall installation with box
type of operation	manual operation
type of shower	in-wall fitting
volume flow rate at 3 bar	0.2 l/s
water connection	threaded connection (external)
position of water connection	from side
Accent colour	chrome-look (glossy)
Basic colour	stainless steel

Mandatory Accessories



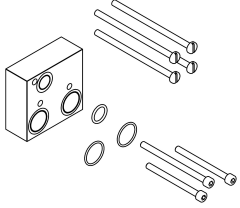
R5 System box for in-wall mixer

2030028990
F5BX2001

Optional Accessories

KWC F5S-Therm Self-closing thermostatic mixer

Modell-Linie: F5S | F5ST2034
Showers | Self closing showers



Extension set

2030067889
ACXT9001

Spare Parts



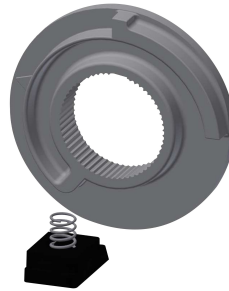
Cover

2030003258
EAQLT0002



Temperature handle

2030047082
ASXT9003



Temperature stop

2030003296
EAQLT0003



Plug chromed

2030053006
ASSX9004



Push cap

2030049943
ASST2001



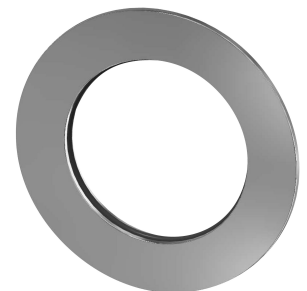
Guide ring

2030048356
ASSX9002



Safety ring

2030048357
ASSX9003



Rosette

2030048765
ASET2006

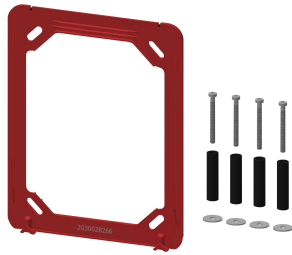
KWC F5S-Therm Self-closing thermostatic mixer

Modell-Linie: F5S | F5ST2034
Showers | Self closing showers



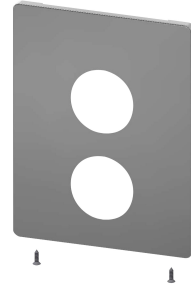
FRAMIC Self-closing cartridge

2030046145
ASSX9001



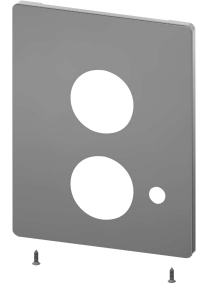
Holding frame

2030045472
ASXX9004



Cover plate stainless steel

2030050136
ASST2003



Cover plate stainless steel

2030050138
ASST2004



Stainless steel care set

2000109019
ZWSPL0024



Cleaning product CHROMOL

2000105091
ZWSPL0023