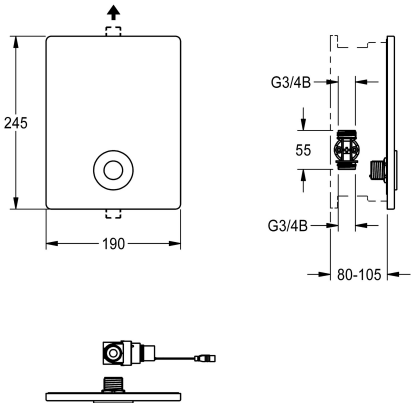


KWC F5E  
Electronic in-wall tap

Modell-Linie: F5E | F5EV2005  
Showers | Electronic self closing shower



KWC-No.

2030067748

F5E gate valve DN 15 as finished installation kit for in-wall installation in basic installation kit, for shower facilities. Electronically controlled, for connection to pre-mixed hot water or cold water. With solenoid valve, holding frame with profile seal, stainless steel cover plate 190 x 245 mm with covered screw fixing including sensor with control electronics, start/stop function and cleaning deactivation. Depth adjustable by 25 mm. Activated hygiene flushing 24 hours after last activation and saving of statistical data.

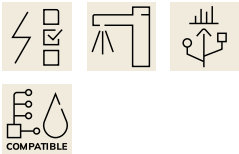
With option for parametrisation and communication via optional bidirectional remote control. Option for battery operation with 6 V lithium battery (CR-P2) per fitting or separate power supply via power supply unit 6.75 V/12 V DC or AQUA 3000 open system accessories.

Battery compartment including battery or power supply unit with extension cable must be ordered separately.

Technical Data

additional connections	no
with backflow preventer	no
Built-in fitting model	Finishing section
calculation flow rate cold wat	0.15 l/s
circulation	no
compatible A3000 open	yes
connection with pay water disp	via electronic module
Cover plate height	245 mm
Cover plate width	190 mm
default automatic hygiene flus	24h after the last activity
default flow time	30 Seconds
with filter	yes
adjustable flow time	yes
functional principle	electronic self-closing
for hand shower	no
hygiene flushing	yes
diameter nominal	DN 15
inlet size	G 3/4 B
Locking mechanism	Top section, non-ceramic
material casing	stainless steel
maximum flow time	255 Seconds
minimum flow pressure	1 bar
minimum flow time	1 Seconds

additional connections	no
with backflow preventer	no
Built-in fitting model	Finishing section
calculation flow rate cold wat	0.15 l/s
circulation	no
compatible A3000 open	yes
connection with pay water disp	via electronic module
Cover plate height	245 mm
Cover plate width	190 mm
default automatic hygiene flus	24h after the last activity
default flow time	30 Seconds
with filter	yes
adjustable flow time	yes
functional principle	electronic self-closing
for hand shower	no
hygiene flushing	yes
diameter nominal	DN 15
inlet size	G 3/4 B
Locking mechanism	Top section, non-ceramic
material casing	stainless steel
maximum flow time	255 Seconds
minimum flow pressure	1 bar
minimum flow time	1 Seconds

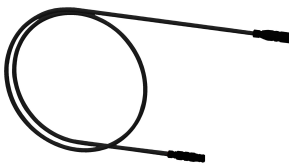
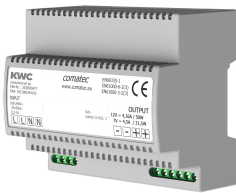


KWC F5E  
Electronic in-wall tap

Modell-Linie: F5E | F5EV2005  
Showers | Electronic self closing shower

type of mixing	no
Parameterization	remote control
power supply connection	6,75 / 12 V DC / A3000 open
position of power connection	from top
power consumption	1.5 Voltampere
with rosettes/cover plate	yes
protective shutdown	yes
shower pipe draining	no
sound insulation	no
surface finish casing	satin finished
surface treatment fitting	none
temperature limit	no
thermal disinfection	automatic thermal disinfection
with transformer/power supply	no
type of mounting	in-wall installation with box
type of operation	sensor operation
type of sensor	opto-electronic sensor
type of shower	in-wall fitting
volume flow rate at 3 bar	0.23 l/s
water connection	threaded connection (external)
position of water connection	from bottom
Accent colour	none
Basic colour	stainless steel-look

Mandatory Accessories



Battery compartment

**3600002063**  
ACEX9023

Power supply unit

**2030039477**  
ACEX9001

Extension cable 5 m

**2030043814**  
ACEX9010

Optional Accessories

KWC F5E  
Electronic in-wall tap

Modell-Linie: F5E | F5EV2005  
Showers | Electronic self closing shower



Bidirectional remote control for  
electronical fittings F3 and F5

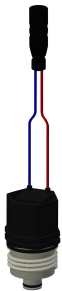
2030036654  
ACEX9005



2-button remote control for fittings F3  
and F5

2030036849  
ACEX9004

Spare Parts



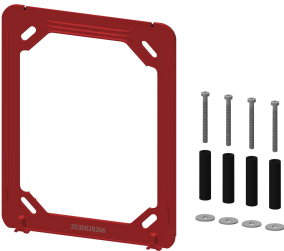
Solenoid valve cartridge

2030003033  
EAQFU0001



Adapter with strainer

2030048629  
ASEV2001



Holding frame

2030045472  
ASXX9004



Stainless steel care set

2000109019  
ZWSP0024



Cleaning product CHROMOL

2000105091  
ZWSP0023