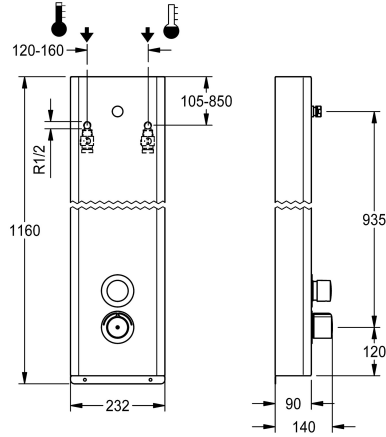


KWC FS5-Therm stainless steel shower panel

Modell-Linie: **F5S | F5ST2043**
Showers | Self closing showers



KWC-No.

2030068003

NEW

F5S-Therm shower panel made of stainless steel for wall mounting with self-closing thermostatic mixer DN 15 and connecting nozzles for shower head. Especially suitable for facilities at risk of vandalism. Hydraulically controlled, for connection from the rear to hot and cold water. Function block with integrated FRAMIC self-closing cartridge, thermostat and mechanism for a water hygiene unit for automatic hygiene flushing, program-controlled thermal disinfection (additional bypass solenoid-operated flush valve cartridge necessary) and storage of statistical data. FRAMIC self-closing cartridge, low maintenance and stagnation free, with ceramic disc technology, self-closing, flow pressure independent due to medium-independent design. Stepless adjustment of flow

duration. Thermostat with metal handle, an adjustable and turn-proof temperature stop and an option for manual thermal disinfection, visible parts polished chromium-plated. Connecting nozzles for the required additional DN 15 KWC shower head with pre-fitted flow regulator 9.0 l/min. Housing made of stainless steel, single-piece enclosed, including safety screws. Connecting hoses with lockable water volume control with backflow preventer and strainer.

Housing dimensions 232 x 1160 x 90 mm (W x H x D)

Shower head must be ordered separately.

Technical Data

additional connections
with backflow preventer
circulation
compatible A3000 open
connection with pay water disp
with filter
adjustable flow time
functional principle
for hand shower
hygiene flushing
diameter nominal
inlet size
Locking mechanism
material casing
material code casing
material fitting
maximum flow time
minimum flow pressure
minimum flow time
type of mixing
overall depth

no
yes
no
no
not possible
yes
yes
hydraulic self-closing
no
prepared
DN 15
G 1/2 A
Top section, ceramic
stainless steel
1.4301 Chrome Nickel steel V2A
brass-look
35 Seconds
1 bar
5 Seconds
with thermostat
90 mm



KWC FS5-Therm stainless steel shower panel

Modell-Linie: FS5 | F5ST2043
Showers | Self closing showers

overall height	1,160 mm
overall width	232 mm
with rosettes/cover plate	yes
protective shutdown	no
shower pipe draining	no
Shower head	for separately shower head
with shower set	no
sound insulation	no
surface finish casing	satin finished
surface finish fitting	chromed
surface treatment fitting	polished
temperature limit	yes
thermal disinfection	automatic thermal disinfection
type of mounting	wall mounting
type of operation	manual operation
type of shower	shower panel
volume flow rate at 3 bar	0.15 l/s
water connection	hose (gland nut)
position of water connection	from backside
with soap dish	no
Accent colour	chrome-look (glossy)
Basic colour	stainless steel-look

Mandatory Accessories



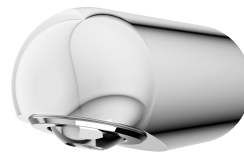
**AQUAJET-Slimline shower head for
KWC shower panels and systems**

2030054255
SHAS0011



**AQUAJET-Comfort shower head for
KWC shower panels and systems**

2030054254
SHAC0011



**MÜNCHEN shower head for KWC
shower panels and systems**

2030054793
SHMU0011

Optional Accessories

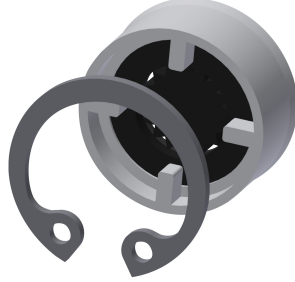
KWC FS5-Therm stainless steel shower panel

Modell-Linie: F5S | F5ST2043
Showers | Self closing showers



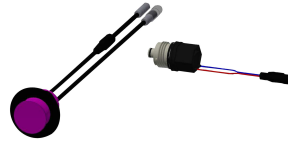
Flow controller 6.0 l/min

2030027586
ESHHE0004



Flow controller 12.0 l/min

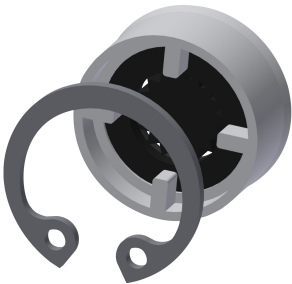
2000104783
ESHHE0002



Hygiene unit for F5S Therm shower panel

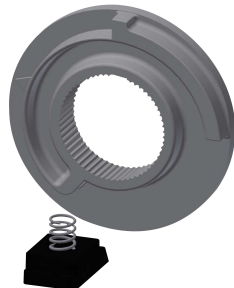
2030057064
ACST2004

Spare Parts



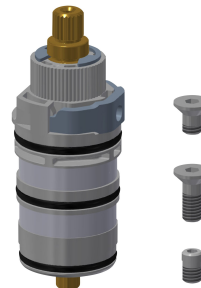
Flow controller 9.0 l/min

2000104782
ESHHE0001



Temperature stop

2030003296
EAQLT0003



Thermocouple

2030003300
EAQLT0004



Plug chromed

2030053006
ASSX9004



Push cap

2030049943
ASST2001



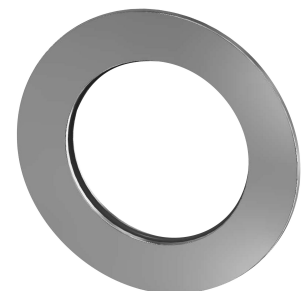
Guide ring

2030048356
ASSX9002



Safety ring

2030048357
ASSX9003



Rosette

2030048765
ASET2006

KWC FS5-Therm stainless steel shower panel

Modell-Linie: **F5S | F5ST2043**
Showers | Self closing showers



FRAMIC Self-closing cartridge

2030046145
ASSX9001



Stainless steel care set

2000109019
ZWSP0024



Cleaning product CHROMOL

2000105091
ZWSP0023