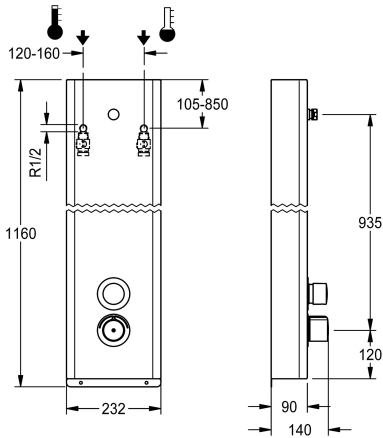


KWC FS5-Therm
stainless steel shower panel

Modell-Linie: FS5 | FS5T2043
Showers | Self closing showers



KWC-No.

2030068003

FS5-Therm shower panel made of stainless steel for wall mounting with self-closing thermostatic mixer DN 15 and connecting nozzles for shower head. Especially suitable for facilities at risk of vandalism. Hydraulically controlled, for connection from the rear to hot and cold water. Function block with integrated FRAMIC self-closing cartridge, thermostat and mechanism for a water hygiene unit for automatic hygiene flushing, program-controlled thermal disinfection (additional bypass solenoid-operated flush valve cartridge necessary) and storage of statistical data. FRAMIC self-closing cartridge, low maintenance and stagnation free, with ceramic disc technology, self-closing, flow pressure independent due to medium-independent design. Stepless adjustment of flow

duration. Thermostat with metal handle, an adjustable and turn-proof temperature stop and an option for manual thermal disinfection, visible parts polished chromium-plated. Connecting nozzles for the required additional DN 15 KWC shower head with pre-fitted flow regulator 9.0 l/min. Housing made of stainless steel, single-piece enclosed, including safety screws. Connecting hoses with lockable water volume control with backflow preventer and strainer.

Housing dimensions 232 x 1160 x 90 mm (W x H x D)

Shower head must be ordered separately.

Technical Data

additional connections	no
with backflow preventer	yes
circulation	no
compatible A3000 open	no
connection with pay water disp	not possible
with filter	yes
adjustable flow time	yes
functional principle	hydraulic self-closing
for hand shower	no
hygiene flushing	prepared
diameter nominal	DN 15
inlet size	G 1/2 A
Locking mechanism	Top section, ceramic
material casing	stainless steel
material code casing	1.4301 Chrome Nickel steel V2A
material fitting	brass-look
maximum flow time	35 Seconds
minimum flow pressure	1 bar
minimum flow time	5 Seconds
type of mixing	with thermostat
overall depth	90 mm



FRAMIC
INSIDE



KWC FS5-Therm
stainless steel shower panel

Modell-Linie: F5S | F5ST2043
Showers | Self closing showers

overall height	1,160 mm
overall width	232 mm
Parameterization	manual
with rosettes/cover plate	yes
protective shutdown	no
shower pipe draining	no
Shower head	for separately shower head
with shower set	no
sound insulation	no
surface finish casing	satin finished
surface finish fitting	chromed
surface treatment fitting	polished
temperature limit	yes
thermal disinfection	manual
type of mounting	wall mounting
type of operation	manual operation
type of shower	shower panel
volume flow rate at 3 bar	0.15 l/s
water connection	hose (gland nut)
position of water connection	from backside
with soap dish	no
Accent colour	chrome-look (glossy)
Basic colour	stainless steel-look

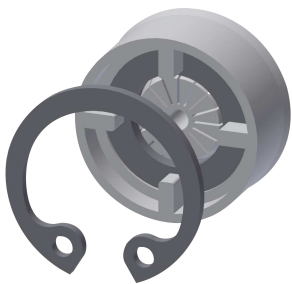
Mandatory Accessories

		
AQUAJET-Slimline shower head for KWC shower panels and systems	AQUAJET-Comfort shower head for KWC shower panels and systems	MÜNCHEN shower head for KWC shower panels and systems
2030054255 SHAS0011	2030054254 SHAC0011	2030054793 SHMU0011

Optional Accessories

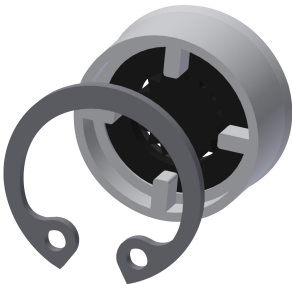
KWC FS5-Therm
stainless steel shower panel

Modell-Linie: F5S | F5ST2043
Showers | Self closing showers



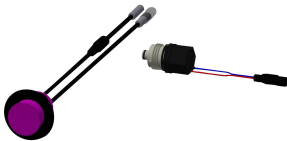
Flow controller 6.0 l/min

2030027586
ESHHE0004



Flow controller 12.0 l/min

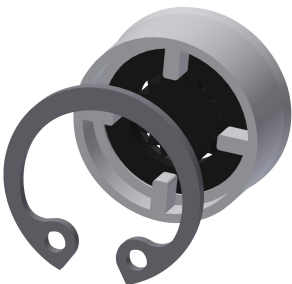
2000104783
ESHHE0002



Hygiene unit for F5S Therm shower panel

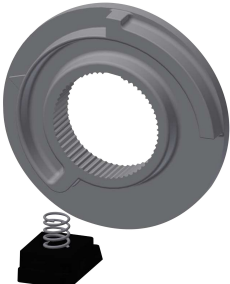
2030057064
ACST2004

Spare Parts



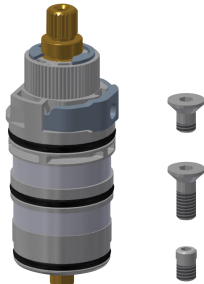
Flow controller 9.0 l/min

2000104782
ESHHE0001



Temperature stop

2030003296
EAQLT0003



Thermocouple

2030003300
EAQLT0004



Plug chromed

2030053006
ASSX9004



Push cap

2030049943
ASST2001



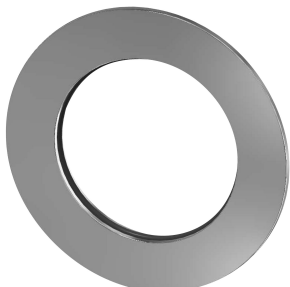
Guide ring

2030048356
ASSX9002



Safety ring

2030048357
ASSX9003



Rosette

2030048765
ASET2006



KWC FS5-Therm
stainless steel shower panel

Modell-Linie: FS5 | F5ST2043
Showers | Self closing showers



FRAMIC Self-closing cartridge

2030046145
ASSX9001



Stainless steel care set

2000109019
ZW SPL0024



Cleaning product CHROMOL

2000105091
ZW SPL0023