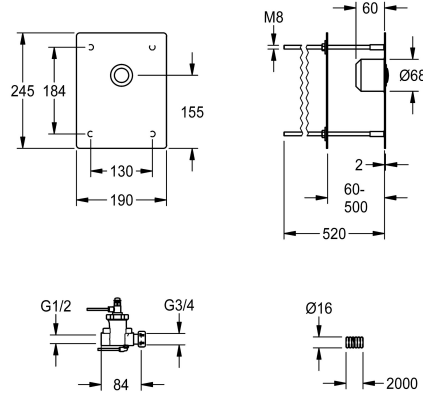


## KWC F3S

### Self-closing shower fitting for rear panel mounting

Modell-Linie: F3S | F3SV2010

Showers | Self closing showers



#### KWC-No.

**2030068165**

NEW

F3S self-closing straight-way valve DN 15 for shower facilities, with remote control for concealed mounting. Especially suitable for facilities at risk of vandalism. Self-closing head part, hydraulically controlled for remote control, piston-free design, self-closing, for connection to pre-mixed hot water or cold water. All-metal construction, visible parts polished chromium-plated. Stainless steel

cover plate 190 x 245 x 2 mm for invisible mounting via threaded rods, up to a wall thickness of 50 to 500 mm, pre-assembled push-button operation. Flush-mounted box, hydraulic control lines with empty conduit (2 m) and mounting material. Connection and maintenance via service room.

#### Technical Data

with backflow preventer	no
Built-in fitting model	Built-in section
circulation	no
compatible A3000 open	no
connection with pay water disp	not possible
Cover plate height	245 mm
Cover plate width	190 mm
with filter	yes
adjustable flow time	yes
functional principle	hydraulic self-closing
hygiene flushing	no
Locking mechanism	Top section, non-ceramic
maximum flow time	30 Seconds
minimum flow pressure	1 bar
minimum flow time	20 Seconds
type of mixing	no
with rosettes/cover plate	yes
protective shutdown	no
shower pipe draining	no
temperature limit	no
thermal disinfection	no
type of mounting	bolt mounting
type of operation	manual operation
type of shower	in-wall fitting
volume flow rate at 3 bar	0.3 l/s

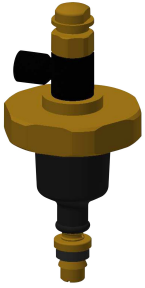


## KWC F3S

Self-closing shower fitting for rear panel mounting

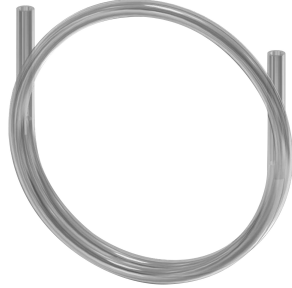
Modell-Linie: F3S | F3SV2010  
Showers | Self closing showers

### Spare Parts



#### Upper part

**2000104403**  
EAQLN0005



#### Remote operation hose

**2000104803**  
EAQLN0019



#### Remote operation valve

**2000104780**  
EFLSY0027



#### Stainless steel care set

**2000109019**  
ZWSPL0024



#### Cleaning product CHROMOL

**2000105091**  
ZWSPL0023